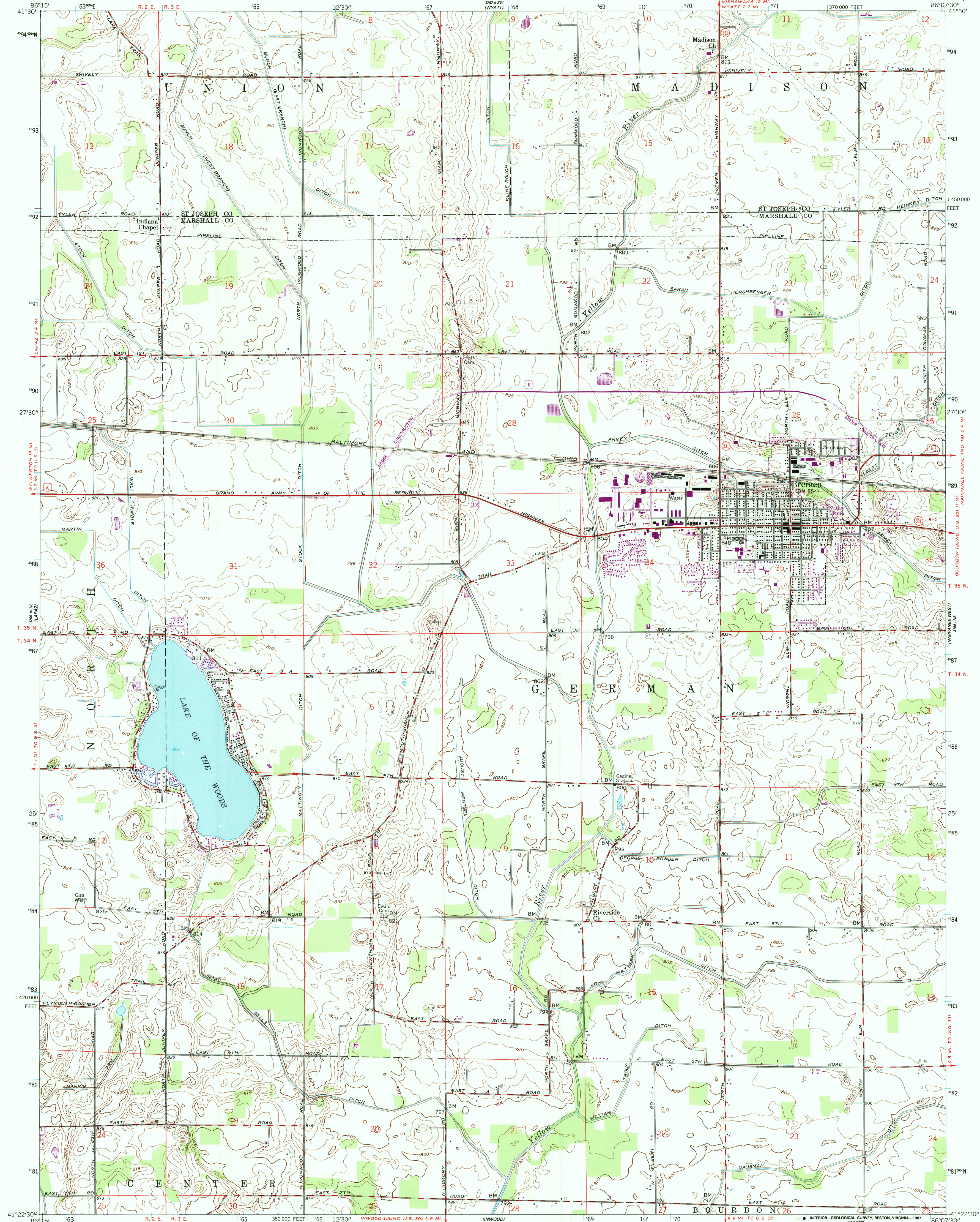
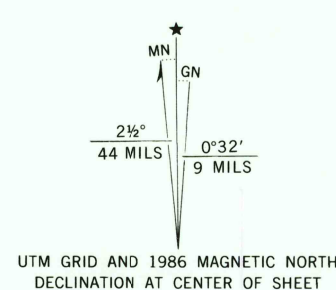


UNITED STATES
DEPARTMENT OF THE INTERIOR
GEOLOGICAL SURVEY

BREMEN QUADRANGLE
INDIANA
7.5 MINUTE SERIES (TOPOGRAPHIC)



Mapped, edited, and published by the Geological Survey
Control by USGS, NOS/NOAA, and Indiana Flood Control and
Water Resources Commission
Culture and drainage from controlled aerial photomosaic
Aerial photographs taken 1956
Topography by planetable surveys 1958
Polyconic projection. 10,000-foot grid ticks based on
Indiana coordinate system, east zone
1000-meter Universal Transverse Mercator grid ticks,
zone 16, shown in blue
1927 North American Datum
To place on the predicted North American Datum 1983 move
the projection lines 1 meter east as shown by dashed
corner ticks



SCALE 1:24,000
1000 0 1000 2000 3000 4000 5000 6000 7000 FEET
1 5 10 15 20 25 30 35 40 45 50 55 60 65 70 75 80 85 90 95 100 METERS
CONTOUR INTERVAL 5 FEET
NATIONAL GEODETIC VERTICAL DATUM OF 1929

THIS MAP COMPLIES WITH NATIONAL MAP ACCURACY STANDARDS
FOR SALE BY U.S. GEOLOGICAL SURVEY, RESTON, VIRGINIA 22092
AND INDIANA DEPARTMENT OF NATURAL RESOURCES, INDIANAPOLIS, INDIANA 46204
A FOLDER DESCRIBING TOPOGRAPHIC MAPS AND SYMBOLS IS AVAILABLE ON REQUEST

Revisions shown in purple and woodland compiled in cooperation
with State of Indiana agencies from aerial photographs taken 1981
and other sources. This information not field checked
Map edited 1986

ROAD CLASSIFICATION
Heavy-duty ——— Light-duty ———
Medium-duty ——— Unimproved dirt ———
U.S. Route ——— State Route ———



BREMEN, IND.
41086-02-TF-024

1958
PHOTOREVISED 1986
DMA 3766 I NW—SERIES V851

