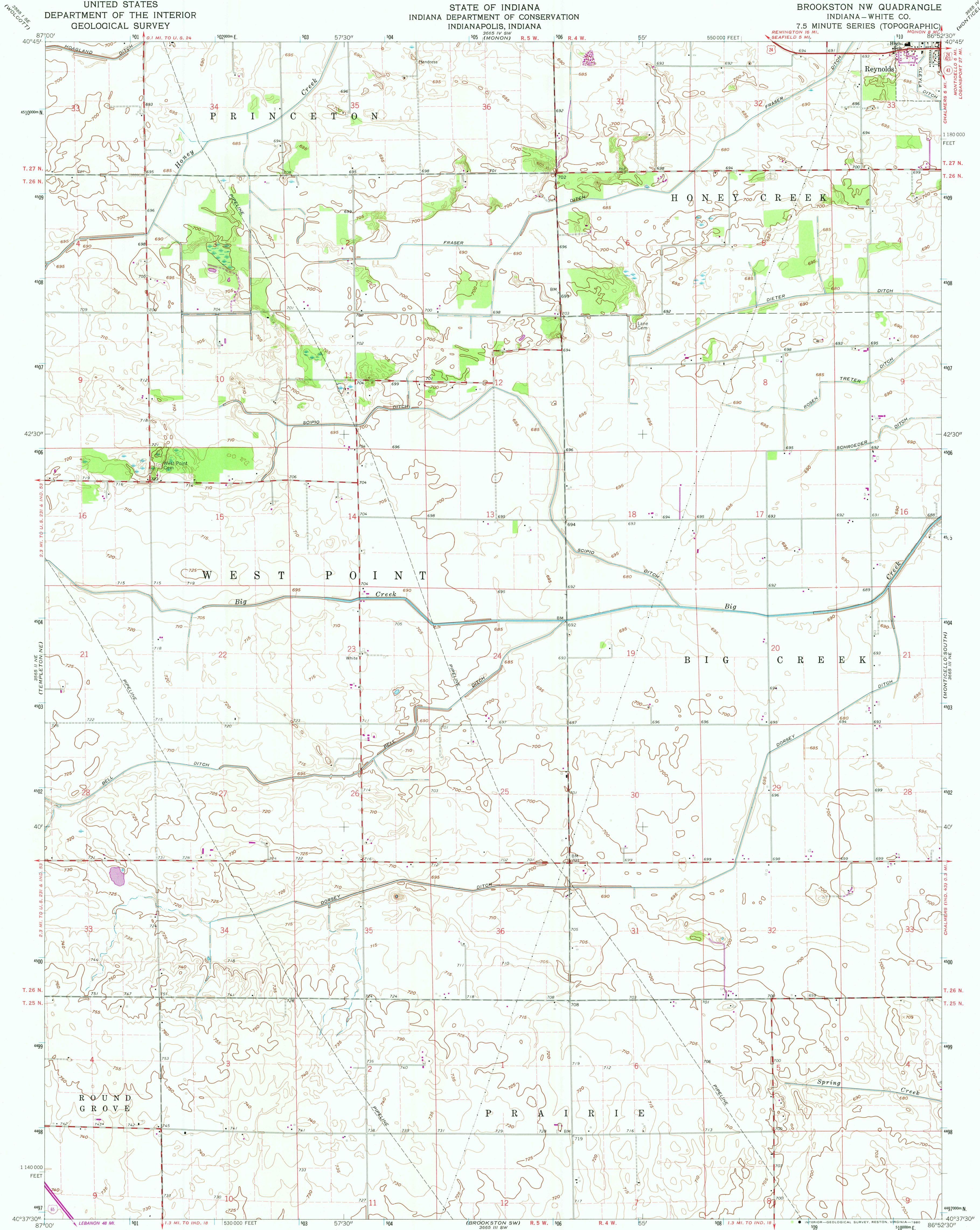


UNITED STATES  
DEPARTMENT OF THE INTERIOR  
GEOLOGICAL SURVEY

STATE OF INDIANA  
INDIANA DEPARTMENT OF CONSERVATION  
INDIANAPOLIS, INDIANA

BROOKSTON NW QUADRANGLE  
INDIANA—WHITE CO.

7.5 MINUTE SERIES (TOPOGRAPHIC)



Mapped, edited, and published by the Geological Survey

Control by USGS and NOS/NOAA

Topography by photogrammetric methods from aerial

photographs taken 1959. Field checked 1962

Polyconic projection. 10,000-foot grid ticks based on

Indiana coordinate system, west zone

1000-meter Universal Transverse Mercator grid ticks,

zone 16, shown in blue. 1927 North American Datum

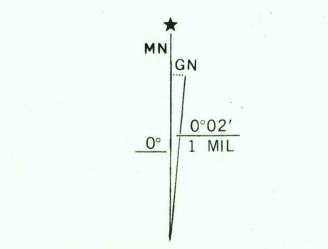
To place on the predicted North American Datum 1983

move the projection lines 2 meters east as shown by

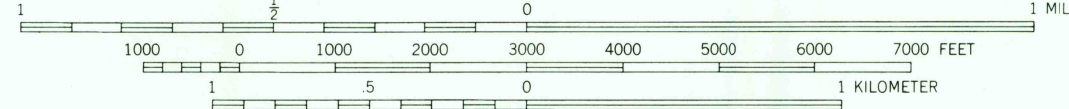
dashed corner ticks

Fine red dashed lines indicate selected fence and field lines where

generally visible on aerial photographs. This information is unchecked



UTM GRID AND 1979 MAGNETIC NORTH  
DECLINATION AT CENTER OF SHEET



CONTOUR INTERVAL 5 FEET

NATIONAL GEODETIC VERTICAL DATUM OF 1929

THIS MAP COMPLIES WITH NATIONAL MAP ACCURACY STANDARDS  
FOR SALE BY U. S. GEOLOGICAL SURVEY, RESTON, VIRGINIA 22092  
AND INDIANA DEPARTMENT OF NATURAL RESOURCES, INDIANAPOLIS, INDIANA 46204  
A FOLDER DESCRIBING TOPOGRAPHIC MAPS AND SYMBOLS IS AVAILABLE ON REQUEST

Revisions shown in purple compiled in cooperation with State of  
Indiana agencies from aerial photographs taken 1976 and other  
source data. This information not field checked. Map edited 1979  
Boundary lines shown in purple compiled from latest information  
available from the controlling authority

ROAD CLASSIFICATION  
Heavy-duty ——— Light-duty ———  
Medium-duty ——— Unimproved dirt ———  
U.S. Route ——— State Route ———  
Interstate Route ———



QUADRANGLE LOCATION

BROOKSTON NW, IND.  
N4037.5—W8652.5/7.5

1962  
PHOTOREVISED 1979  
DMA 3665 III NW—SERIES V851

DEC 12 1980