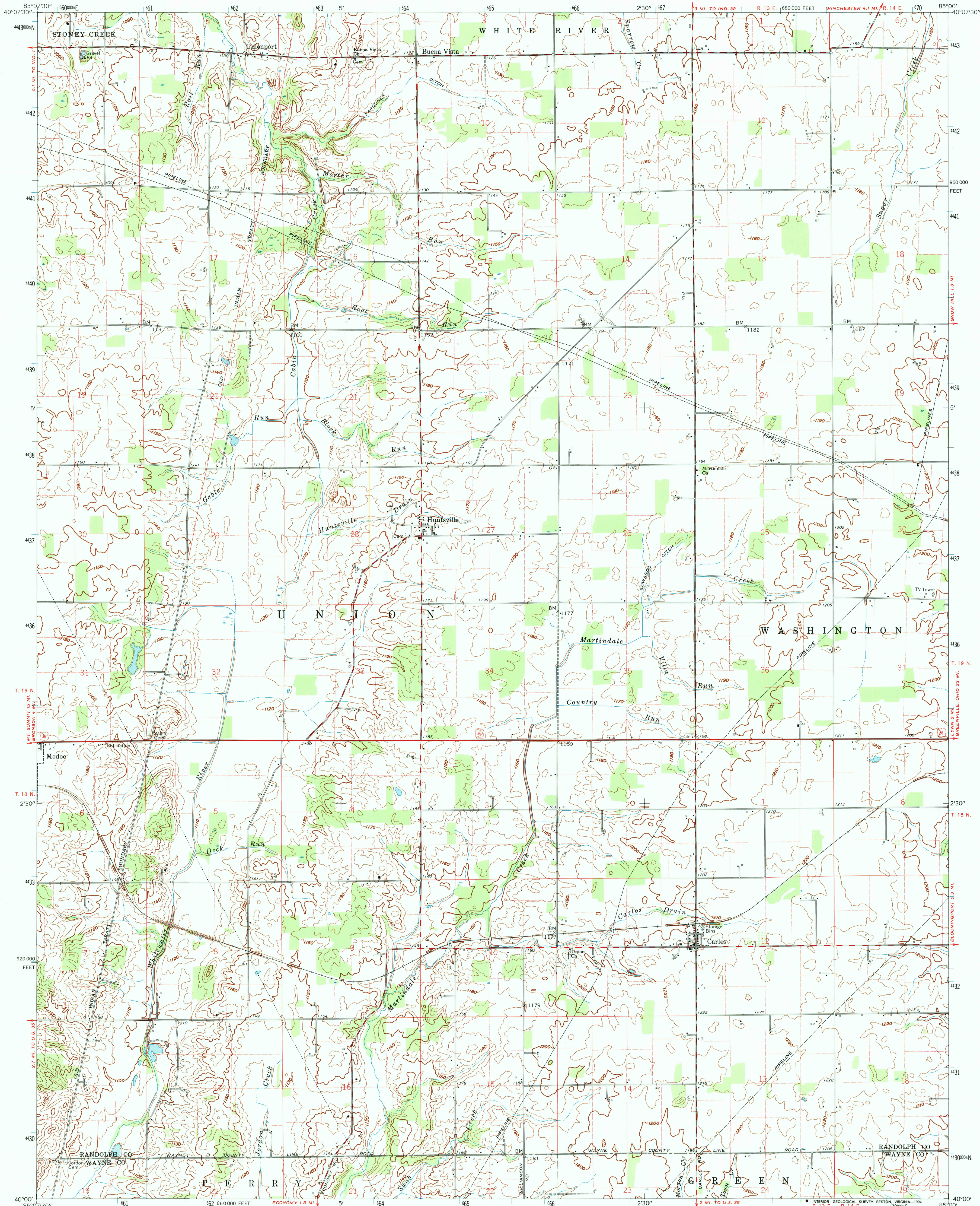


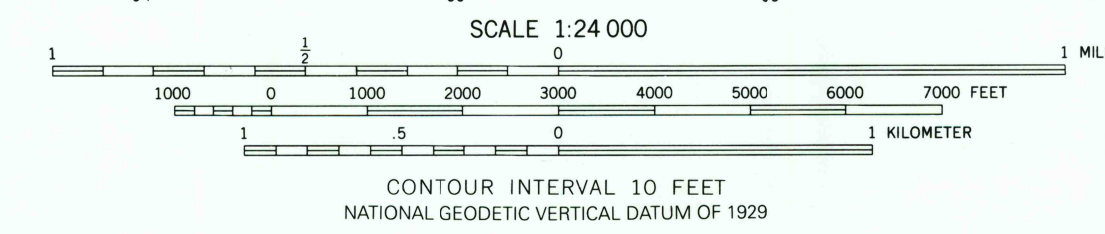
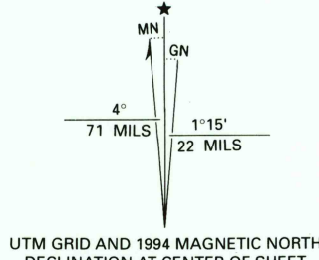
UNITED STATES
DEPARTMENT OF THE INTERIOR
GEOLOGICAL SURVEY

STATE OF INDIANA
DEPARTMENT OF NATURAL RESOURCES
INDIANAPOLIS, INDIANA

CARLOS QUADRANGLE
INDIANA
7.5 MINUTE SERIES (TOPOGRAPHIC)



Produced by the U. S. Geological Survey
Control by USGS and NOS/NOAA
Topography by photogrammetric methods from aerial photographs taken 1958. Field checked 1960
North American Datum of 1927 (NAD 27). Projection and 10 000-foot ticks: Indiana coordinate system, east zone (transverse Mercator)
Blue 1000-meter Universal Transverse Mercator grid ticks, zone 16
North American Datum of 1983 (NAD 83) is shown by dashed corner ticks. The values of the shift between NAD 27 and NAD 83 for 7.5-minute intersections are obtainable from National Geodetic Survey NADCON software
Fine red dashed lines indicate selected fence and field lines where generally visible on aerial photographs. This information is unchecked
Photinspected from 1992 source; no major culture or drainage changes observed. Names revised and boundaries verified 1994



THIS MAP COMPLIES WITH NATIONAL MAP ACCURACY STANDARDS
FOR SALE BY U. S. GEOLOGICAL SURVEY, DENVER, COLORADO 80225, OR RESTON, VIRGINIA 22092
AND INDIANA DEPARTMENT OF NATURAL RESOURCES, INDIANAPOLIS, INDIANA 46204
A FOLDER DESCRIBING TOPOGRAPHIC MAPS AND SYMBOLS IS AVAILABLE ON REQUEST

ROAD CLASSIFICATION
Heavy-duty ——— Light-duty ———
Medium-duty ——— Unimproved dirt ———
U. S. Route

QUADRANGLE LOCATION

ADJOINING 7.5' QUADRANGLE NAMES

1	2	3
4	5	6
7	8	9

1 Farmland
2 Maxville
3 Winchester
4 Modoc
5 Lynn
6 Hagerstown
7 Greens Fork
8 Fountain City

CARLOS, IND.
40085-A1-TF-024
1960
MINOR REVISION 1994
DMA 3964 II SE - SERIES V851

