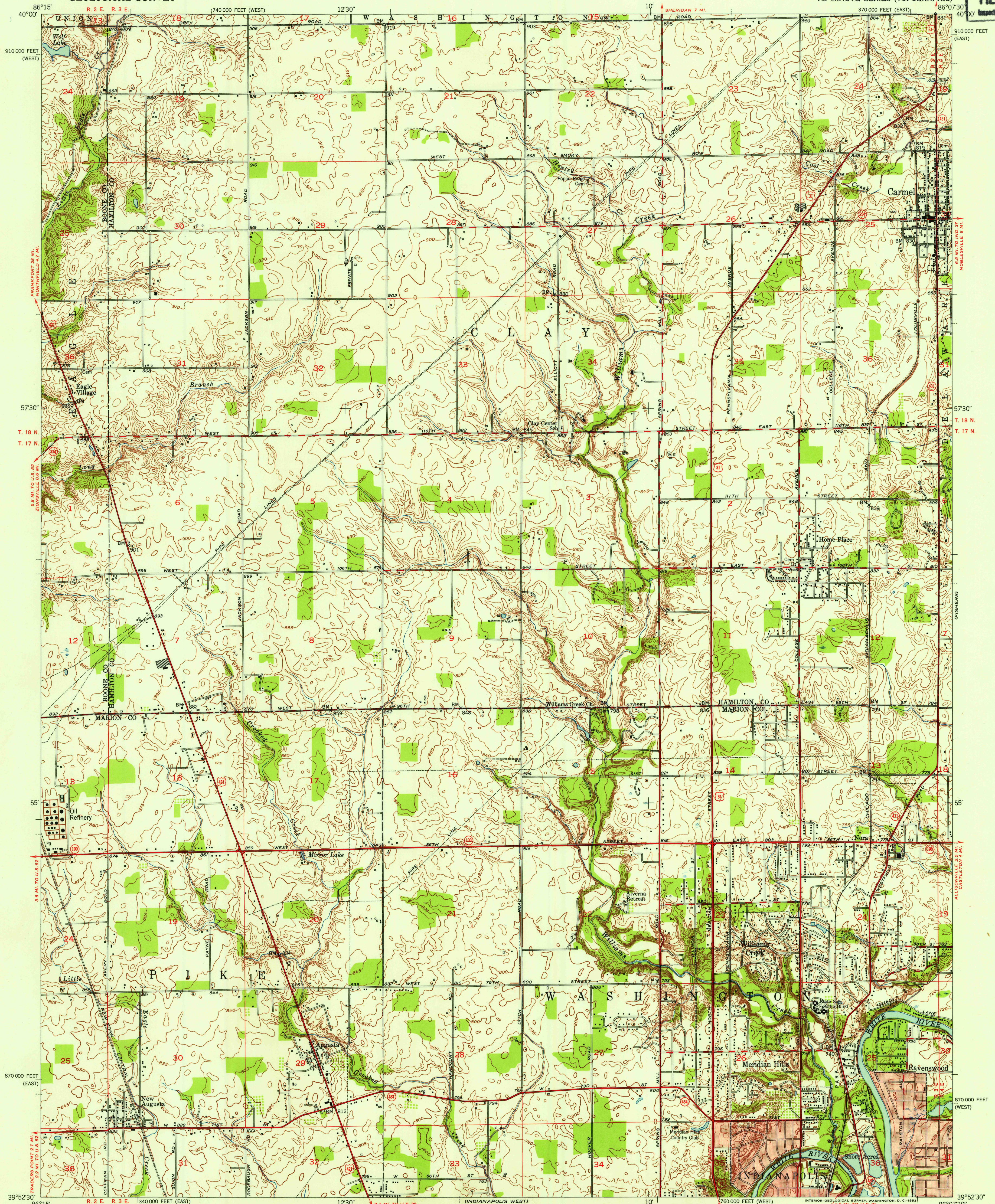


UNITED STATES
DEPARTMENT OF THE INTERIOR
GEOLOGICAL SURVEY

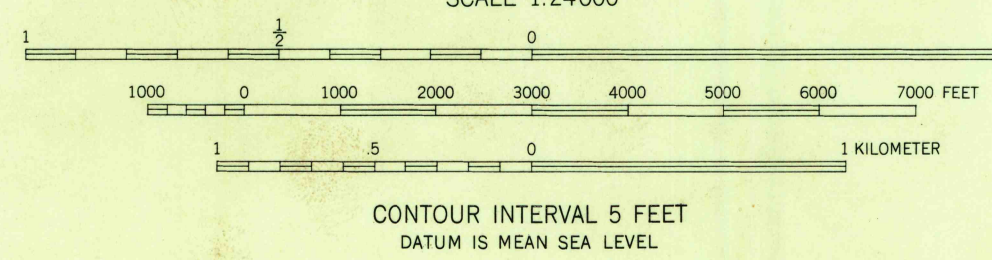
CARMEL QUADRANGLE
INDIANA
7.5 MINUTE SERIES (TOPOGRAPHIC)

U.S.G.S.
FILE COPY
Inspection and Editing



Mapped, edited, and published by the Geological Survey
Control by USGS and USC&GS
Culture and drainage in part compiled from aerial photographs
taken 1951. Topography by plane-table surveys 1952
Polyconic projection. 1927 North American datum
10,000-foot grids based on Indiana coordinate system,
east and west zones
Red tint indicates areas in which only
landmark buildings are shown

TRUE NORTH
MAGNETIC NORTH
APPROXIMATE MEAN
DECLINATION, 1952



THIS MAP COMPLIES WITH NATIONAL MAP ACCURACY STANDARDS
FOR SALE BY U. S. GEOLOGICAL SURVEY, WASHINGTON 25, D. C.
AND INDIANA DEPARTMENT OF CONSERVATION, INDIANAPOLIS, INDIANA
A FOLDER DESCRIBING TOPOGRAPHIC MAPS AND SYMBOLS IS AVAILABLE ON REQUEST

USGS
Historical Files
Topographic Division
QUADRANGLE LOCATION
INDIANA

ROAD CLASSIFICATION
Heavy-duty ———— 4 LANE 6 LANE Light-duty ————
Medium-duty ———— 4 LANE 6 LANE Unimproved dirt ————
U.S. Route ———— State Route ————

U.S.G.S.
FILE COPY
Inspection and Editing

CARMEL, IND.
N3952.5-W8607.5/7.5
1952

AUG 10 1953
3855