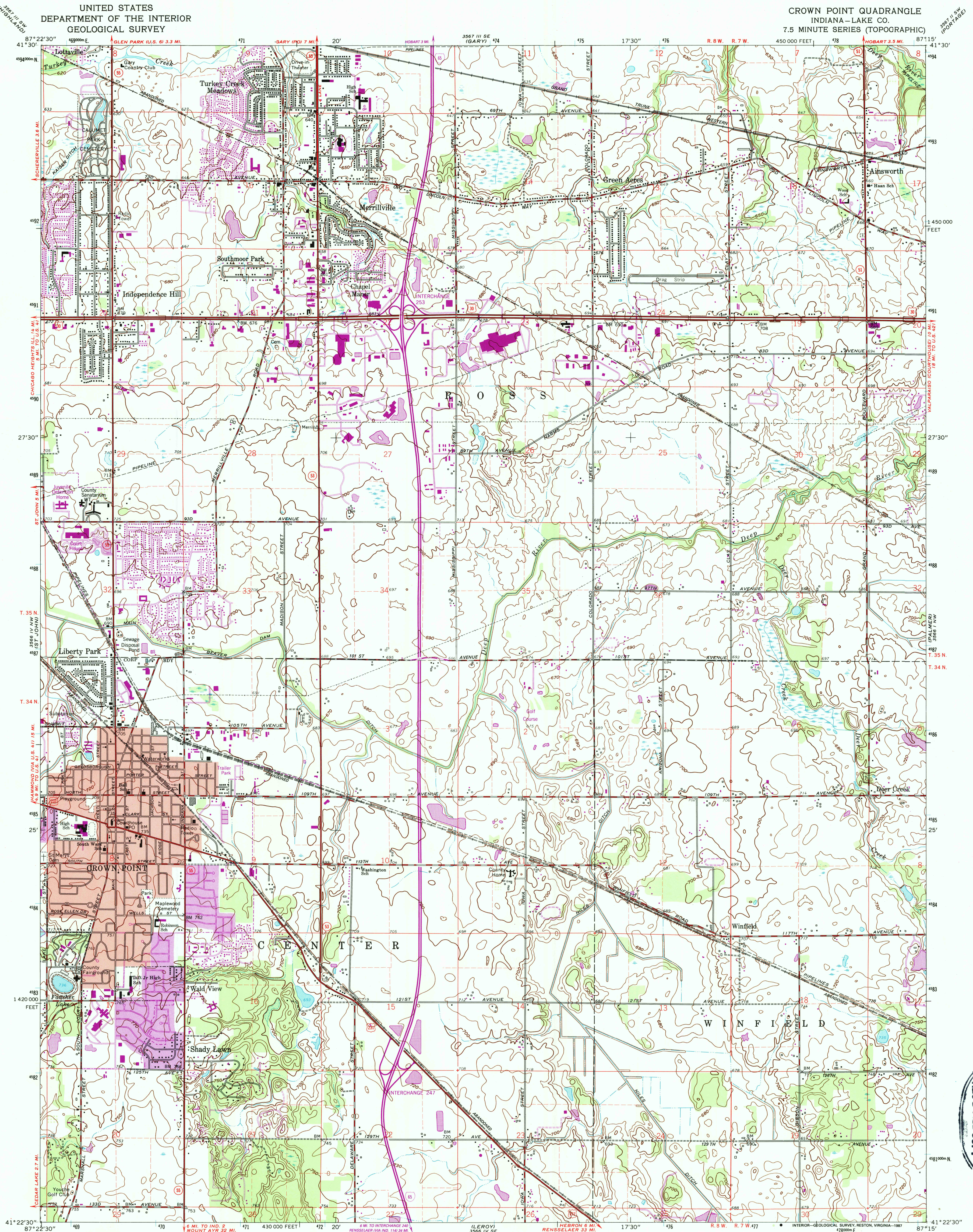


UNITED STATES
DEPARTMENT OF THE INTERIOR
GEOLOGICAL SURVEY

CROWN POINT QUADRANGLE
INDIANA—LAKE CO.
7.5 MINUTE SERIES (TOPOGRAPHIC)



Mapped, edited, and published by the Geological Survey
Revised in cooperation with State of Indiana
Department of Conservation
Control by USGS and NOS/NOAA
Planimetry by photogrammetric methods from aerial photographs
taken 1952. Topography by planimetric surveys 1953. Revised 1962
Polyconic projection. 10,000-foot grid ticks based
on Indiana coordinate system, west zone
1000-meter Universal Transverse Mercator grid ticks,
zone 16, shown in blue
1927 North American Datum
To place on the predicted North American Datum 1983
move the projection lines 1 meter north and
4 meters east as shown by dashed corner ticks
Fine red dashed lines indicate selected fence and field lines where
generally visible on aerial photographs. This information is unchecked
Red tint indicates area in which only landmark buildings are shown

UTM GRID AND 1986 MAGNETIC NORTH
DECLINATION AT CENTER OF SHEET

SCALE 1:24,000
CONTOUR INTERVAL 10 FEET
NATIONAL GEODETIC VERTICAL DATUM OF 1929

THIS MAP COMPLIES WITH NATIONAL MAP ACCURACY STANDARDS
FOR SALE BY U. S. GEOLOGICAL SURVEY
DENVER, COLORADO 80225, OR RESTON, VIRGINIA 22092
AND INDIANA DEPARTMENT OF NATURAL RESOURCES, INDIANAPOLIS, INDIANA 46204
A FOLDER DESCRIBING TOPOGRAPHIC MAPS AND SYMBOLS IS AVAILABLE ON REQUEST

ROAD CLASSIFICATION
Primary highway, hard surface
Secondary highway, hard surface
Unimproved road
Interstate Route
U. S. Route
State Route
Light-duty road, hard or improved surface
Unimproved road
U. S. Route
State Route
Revisions shown in purple and woodland compiled in cooperation
with State of Indiana agencies from aerial photographs taken 1981
and other sources. This information not field checked
Map edited 1986
Purple tint indicates extension of urban areas
CROWN POINT, IND.
41087-D3-TF-024
1962
PHOTOREVISED 1986
DMA 3566 IV NE—SERIES V851

REC'D FILE COPY
SEP 30 1987
U.S. GEOLOGICAL SURVEY