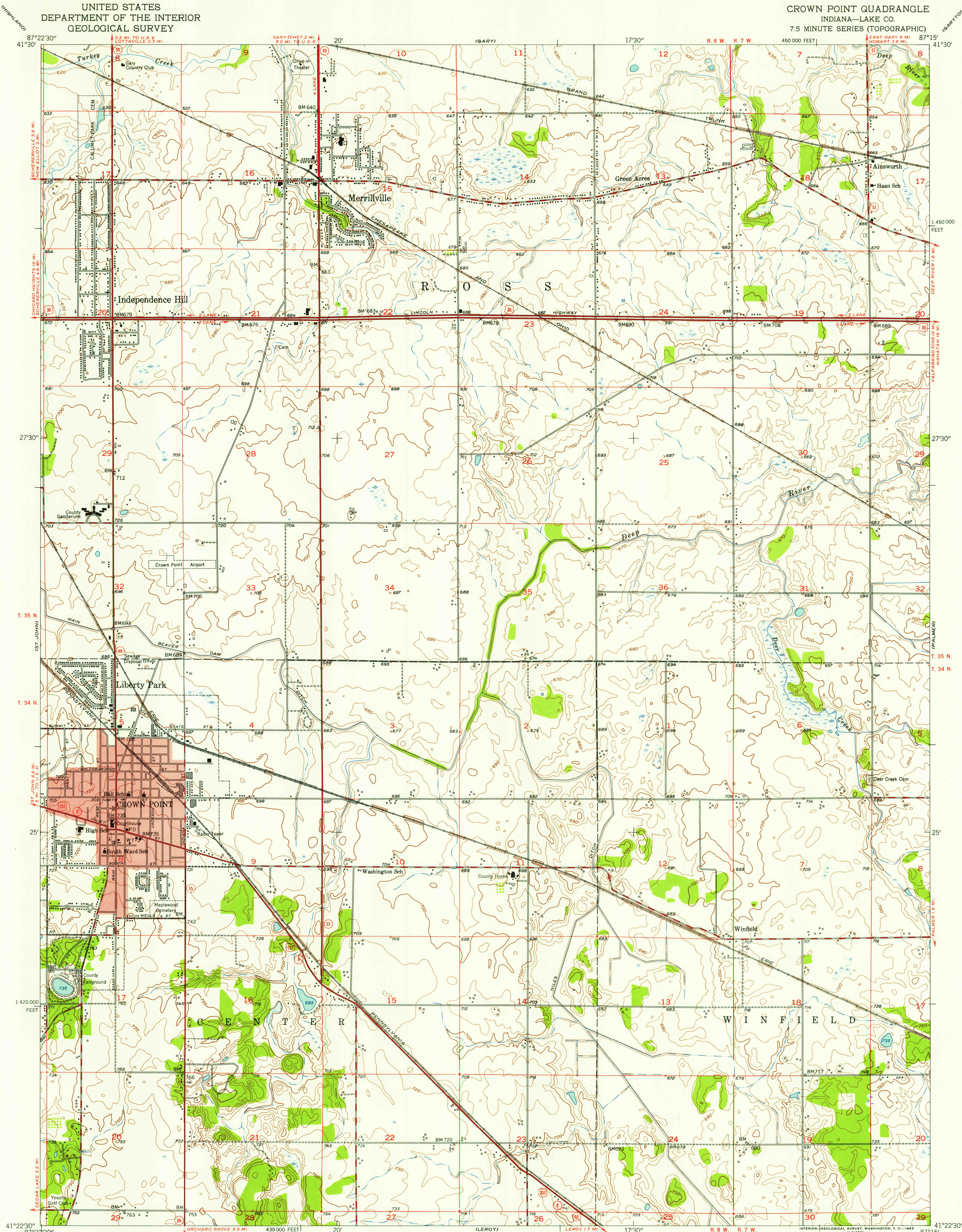


UNITED STATES  
DEPARTMENT OF THE INTERIOR  
GEOLOGICAL SURVEY

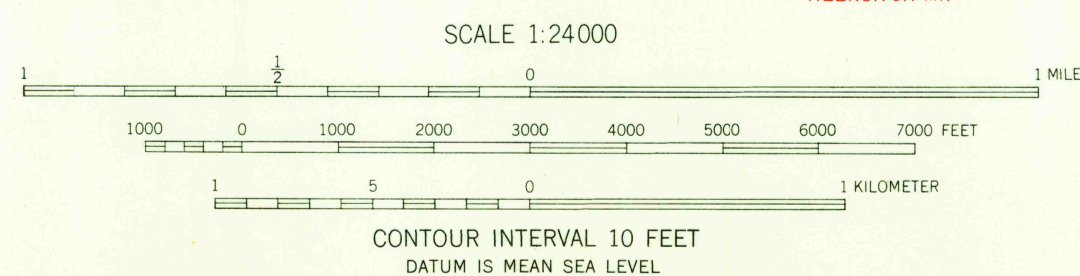
CROWN POINT QUADRANGLE  
INDIANA—LAKE CO.  
7.5 MINUTE SERIES (TOPOGRAPHIC)

U.S.G.S.  
FILE COPY  
TOPOGRAPHIC DIVISION



Mapped, edited, and published by the Geological Survey  
Control by USGS and USC&GS  
Culture and drainage in part compiled from aerial photographs  
taken 1952. Topography by plane-table surveys 1953  
Polyconic projection. 1927 North American datum  
10,000-foot grid based on Indiana coordinate system,  
west zone  
Red tint indicates area in which only  
landmark buildings are shown

TRUE NORTH  
MAGNETIC NORTH  
APPROXIMATE MEAN  
DECLINATION, 1953



USGS  
Historical File  
Topographic Division

ROAD CLASSIFICATION  
Heavy-duty ——— 2 LANE 16 LANE Light-duty ———  
Medium-duty ——— 2 LANE 16 LANE Unimproved dirt ———  
U. S. Route ——— State Route ———



CROWN POINT, IND.  
N4122.5—W8715/7.5

1953

U.S.G.S.  
FILE COPY  
TOPOGRAPHIC DIVISION

MAY 20 1955

3155