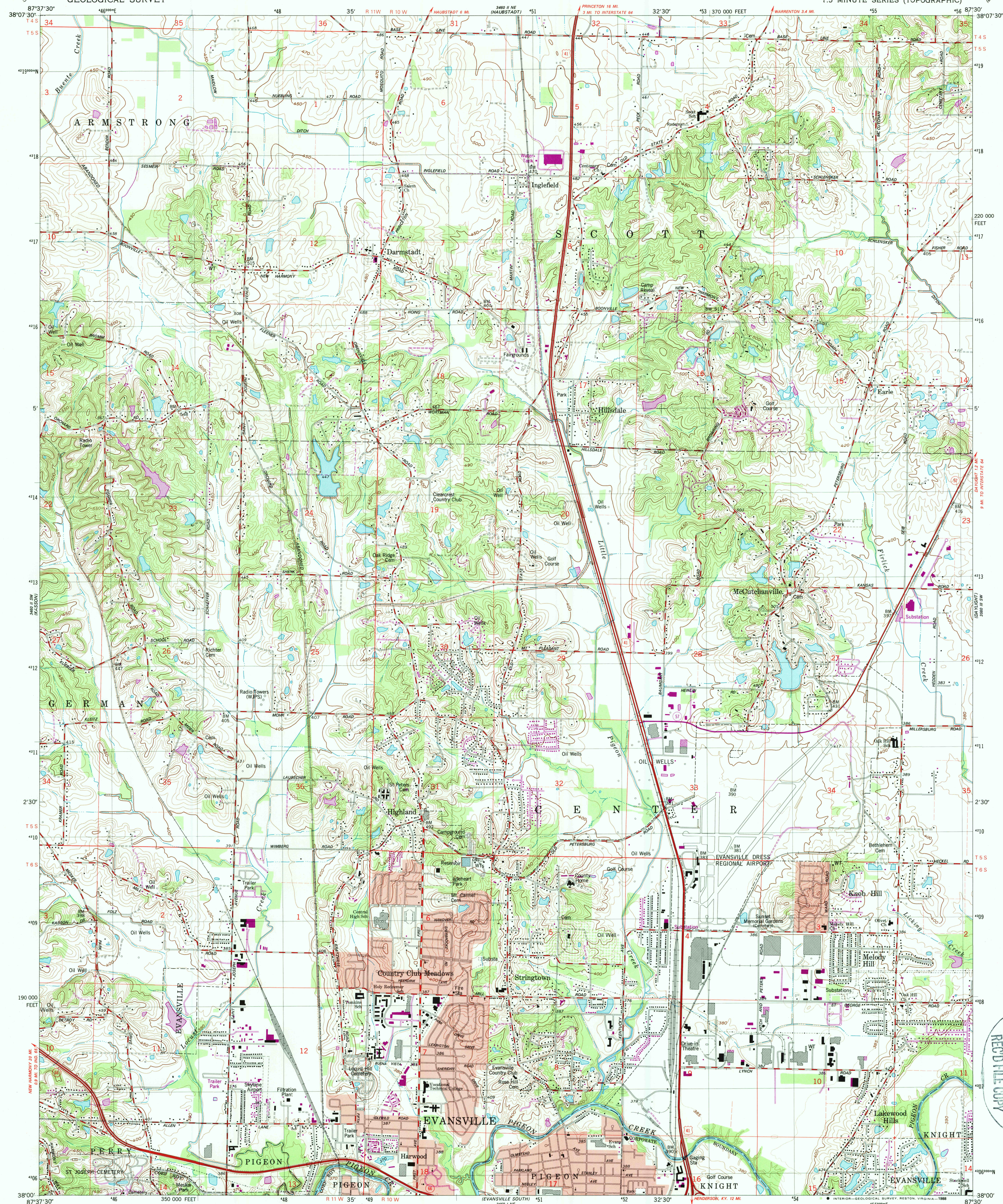
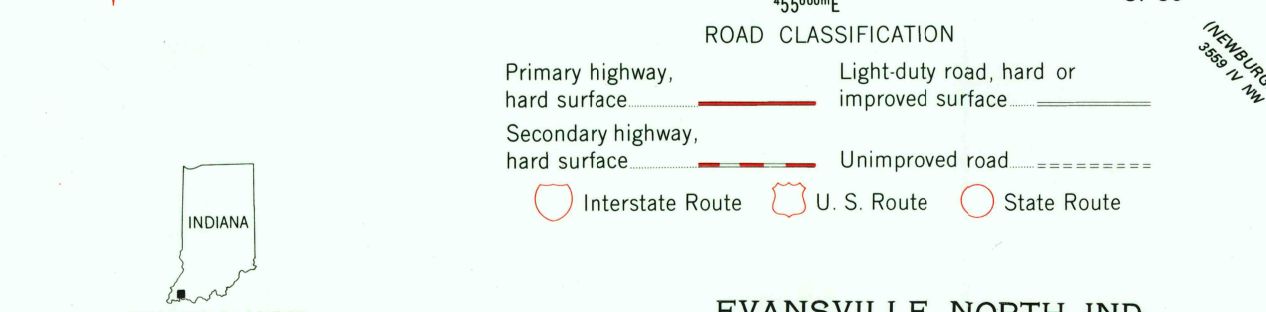
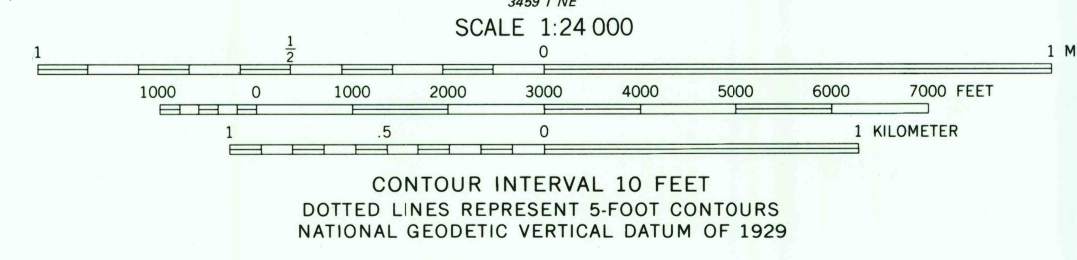
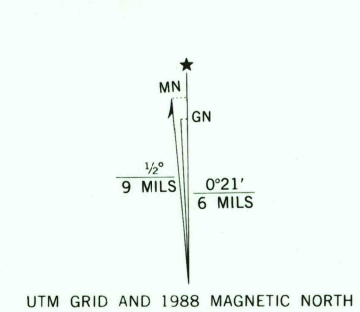


UNITED STATES
DEPARTMENT OF THE INTERIOR
GEOLOGICAL SURVEY

EVANSVILLE NORTH QUADRANGLE
INDIANA-VANDERBURGH CO.
7.5 MINUTE SERIES (TOPOGRAPHIC)



Maped, edited, and published by the Geological Survey
in cooperation with Indiana Department of Natural Resources
Control by USGS and NOS/NOAA
Topography by photogrammetric methods from aerial photographs
taken 1958. Field checked 1961. Revised from aerial
photographs taken 1973. Field checked 1976. Map edited 1981
Polyconic projection, 10,000-foot grid ticks based
on Indiana coordinate system, west zone
1000-meter Universal Transverse Mercator grid, zone 16
1927 North American Datum
To place on the predicted North American Datum 1983
move the projection lines 3 meters south and
2 meters east as shown by dashed corner ticks
Fine red dashed lines indicate selected fence and field lines where
generally visible on aerial photographs. This information is unchecked
Red tint indicates areas in which only landmark buildings are shown



THIS MAP COMPLIES WITH NATIONAL MAP ACCURACY STANDARDS
FOR SALE BY U. S. GEOLOGICAL SURVEY, DENVER, COLORADO 80225 OR RESTON, VIRGINIA 22092,
AND INDIANA DEPARTMENT OF NATURAL RESOURCES, INDIANAPOLIS, INDIANA 46204
A FOLDER DESCRIBING TOPOGRAPHIC MAPS AND SYMBOLS IS AVAILABLE ON REQUEST

Revisions shown in purple and woodland compiled in cooperation
with State of Indiana agencies from aerial photographs
taken 1983 and other sources. This information not field checked
Map edited 1988

EVANSVILLE NORTH, IND.
38087-A5-TF-024

1981
PHOTOREVISED 1988
DMA 3460 II SE - SERIES 7851

USGS NMHD HISTORICAL MAP
SEP 05 1989
REC'D FILE COPY