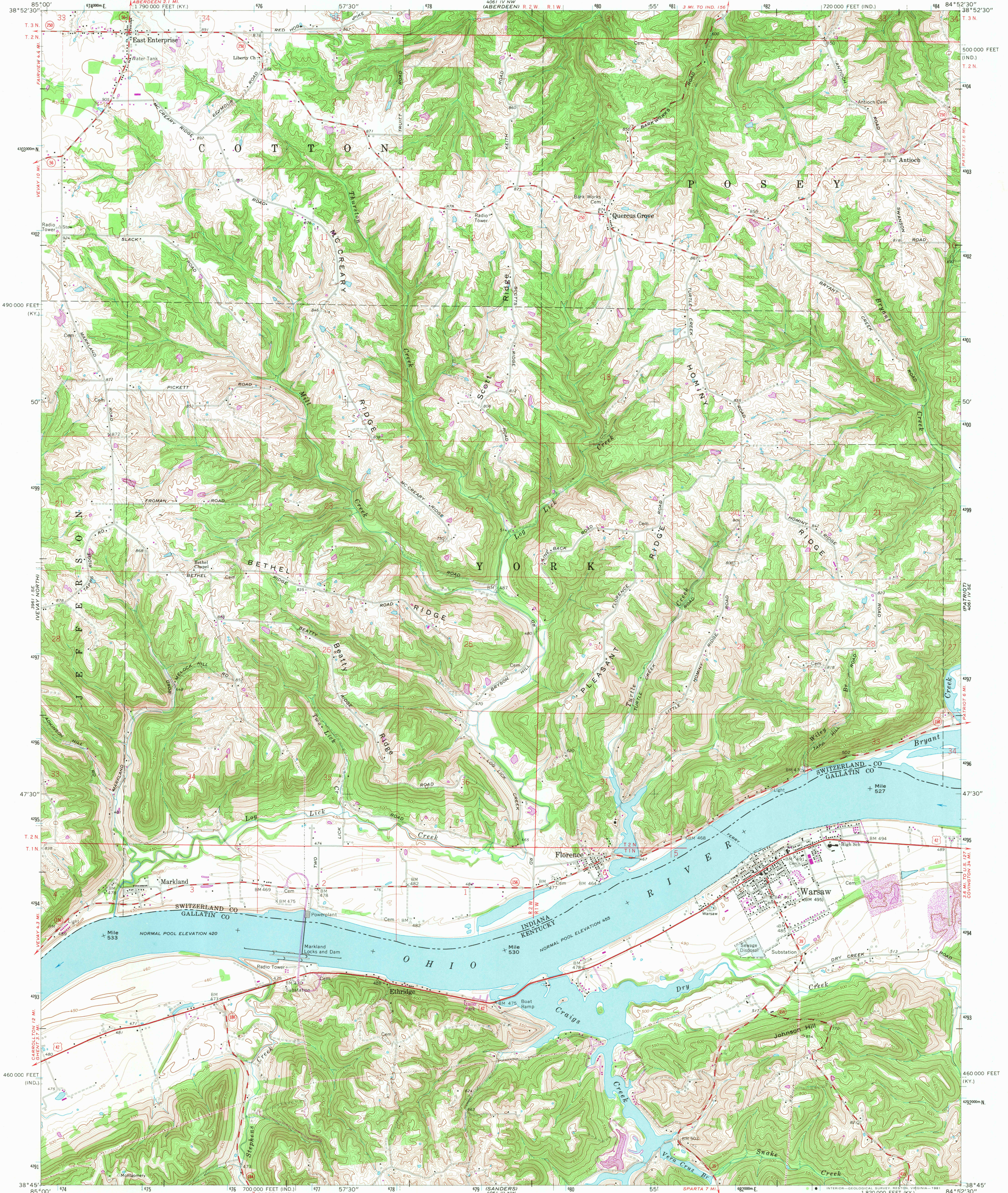


UNITED STATES
DEPARTMENT OF THE INTERIOR
GEOLOGICAL SURVEY

STATE OF INDIANA
DEPARTMENT OF NATURAL RESOURCES
INDIANAPOLIS, INDIANA

FLORENCE QUADRANGLE
INDIANA-KENTUCKY
7.5 MINUTE SERIES (TOPOGRAPHIC)
SW/4 RISING SUN 15' QUADRANGLE



Mapped, edited, and published by the Geological Survey in cooperation with Kentucky Geological Survey Control by USGS, NOS/NOAA, and USCE
Topography in Indiana by planetable surveys 1940
Topography in Kentucky by photogrammetric methods from aerial photographs taken 1949. Field checked 1951. Revised 1966
Polyconic projection. 10,000-foot grids based on Indiana coordinate system, east zone, and Kentucky coordinate system, north zone. 1000-meter Universal Transverse Mercator grid ticks, zone 16, shown in blue
1927 North American Datum. To place on the predicted North American Datum 1983 move the projection lines 3 meters south and 5 meters west as shown by dashed corner ticks
Fine red dashed lines indicate selected fence and field lines where generally visible on aerial photographs. This information is unchecked
The state boundary as shown represents the approximate position of the low water line as determined from U. S. Corps of Engineers Ohio River charts, surveyed 1911, and supplementary information

UTM GRID AND 1981 MAGNETIC NORTH DECLINATION AT CENTER OF SHEET

SCALE 1:24,000
1 1000 0 1000 2000 3000 4000 5000 6000 7000 FEET
1 KILOMETER
CONTOUR INTERVAL 10 FEET
NATIONAL GEODETIC VERTICAL DATUM OF 1929

THIS MAP COMPLIES WITH NATIONAL MAP ACCURACY STANDARDS
FOR SALE BY U. S. GEOLOGICAL SURVEY, RESTON, VIRGINIA 22092,
INDIANA DEPARTMENT OF NATURAL RESOURCES, INDIANAPOLIS, INDIANA 46204,
KENTUCKY GEOLOGICAL SURVEY, LEXINGTON, KENTUCKY 40506,
AND KENTUCKY DEPARTMENT OF COMMERCE, FRANKFORT, KENTUCKY 40601
A FOLDER DESCRIBING TOPOGRAPHIC MAPS AND SYMBOLS IS AVAILABLE ON REQUEST

USGS
HISTORICAL FILE
NATIONAL MAPPING DIVISION



ROAD CLASSIFICATION
Heavy-duty ——— Light-duty ———
Medium-duty ——— Unimproved dirt ———
U. S. Route ——— State Route ———

FLORENCE, IND. - KY.
SW/4 RISING SUN 15' QUADRANGLE
N3845-W8452.5/7.5

1966
PHOTOREVISED 1981
DMA 4061 IV SW-SERIES 7581

Revisions shown in purple compiled in cooperation with State of Indiana agencies from aerial photographs taken 1978 and other source data. Contours adjusted adjacent to certain photorevised hydrographic features. This information not field checked
Map edited 1981

SEP 18 1981

3550