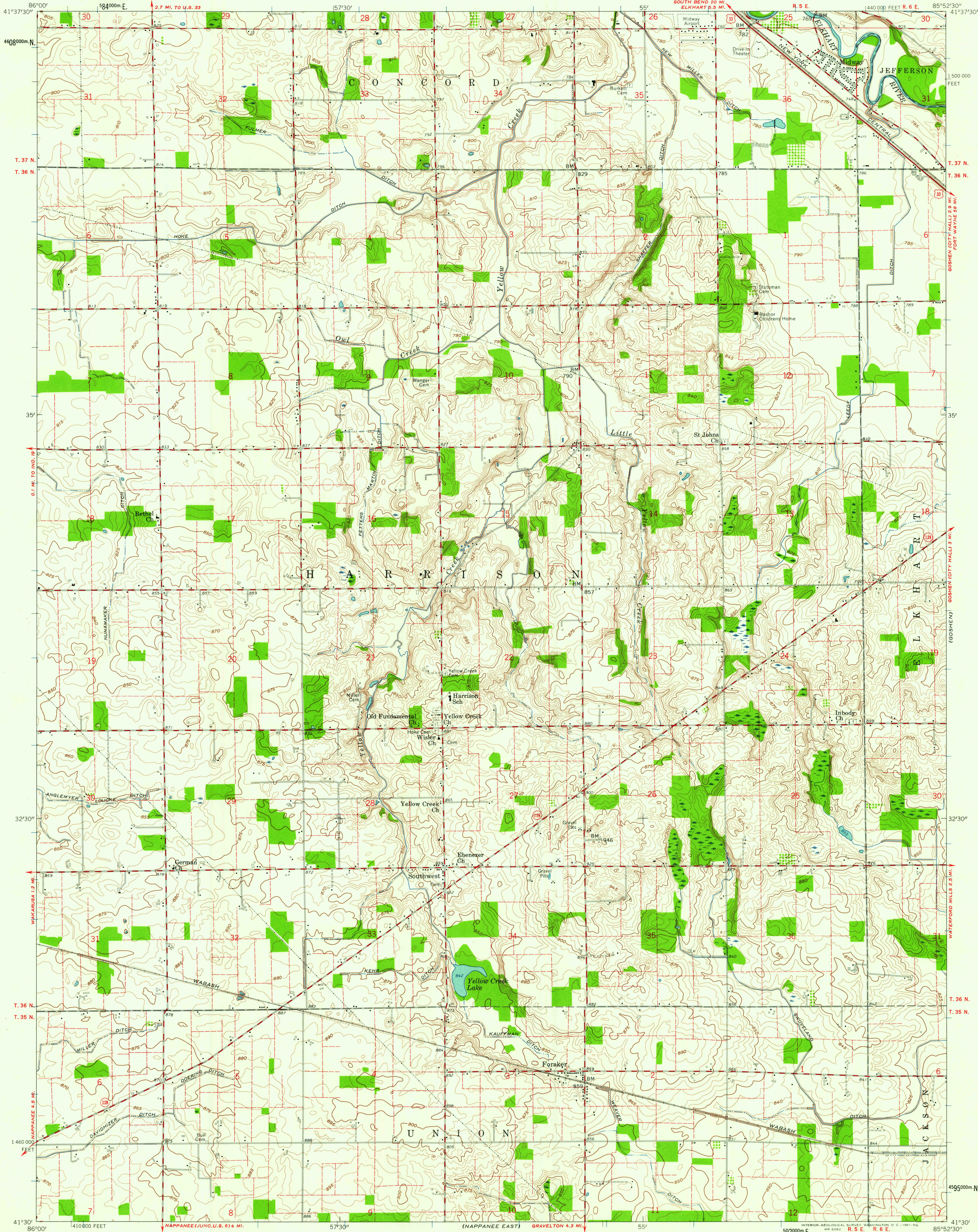


UNITED STATES
DEPARTMENT OF THE INTERIOR
GEOLOGICAL SURVEY

FORAKER QUADRANGLE
INDIANA—ELKHART CO.
7.5 MINUTE SERIES (TOPOGRAPHIC)



Mapped, edited, and published by the Geological Survey

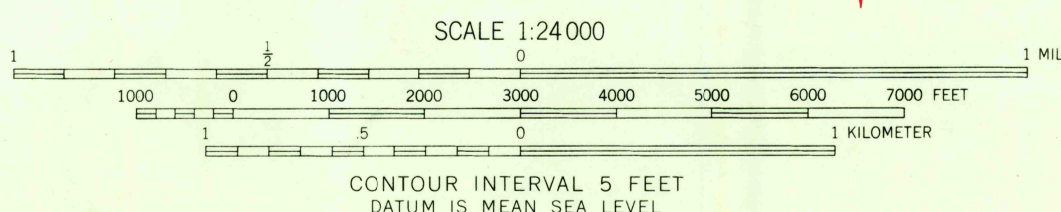
Control by USGS, USGS, and Indiana Flood Control and Water Resources Commission

Culture and drainage in part compiled from aerial photographs taken 1957. Topography by planetable surveys 1959 and 1960

Polyconic projection. 1927 North American datum 10,000-foot grid based on Indiana coordinate system, east zone 1000-meter Universal Transverse Mercator grid ticks, zone 16, shown in blue

Fine red dashed lines indicate selected fence and field lines where generally visible on aerial photographs. This information is unchecked

TRUE NORTH
MAGNETIC NORTH
APPROXIMATE MEAN
DECLINATION, 1960



THIS MAP COMPLIES WITH NATIONAL MAP ACCURACY STANDARDS
FOR SALE BY U.S. GEOLOGICAL SURVEY, WASHINGTON 25, D. C.
AND INDIANA DEPARTMENT OF CONSERVATION, INDIANAPOLIS, INDIANA
A FOLDER DESCRIBING TOPOGRAPHIC MAPS AND SYMBOLS IS AVAILABLE ON REQUEST

USGS
Historical File
Topographic Division



ROAD CLASSIFICATION
Heavy-duty ——— Light-duty ———
Medium-duty ——— Unimproved dirt ———
U. S. Route ——— State Route ———

USGS
FILE COPY
TOPOGRAPHIC DIVISION

FORAKER, IND.
N4130—W8552.5/7.5

1960

see map of 5/22/61
reprinting of
"Franklin" 2420
JUN-2-1961