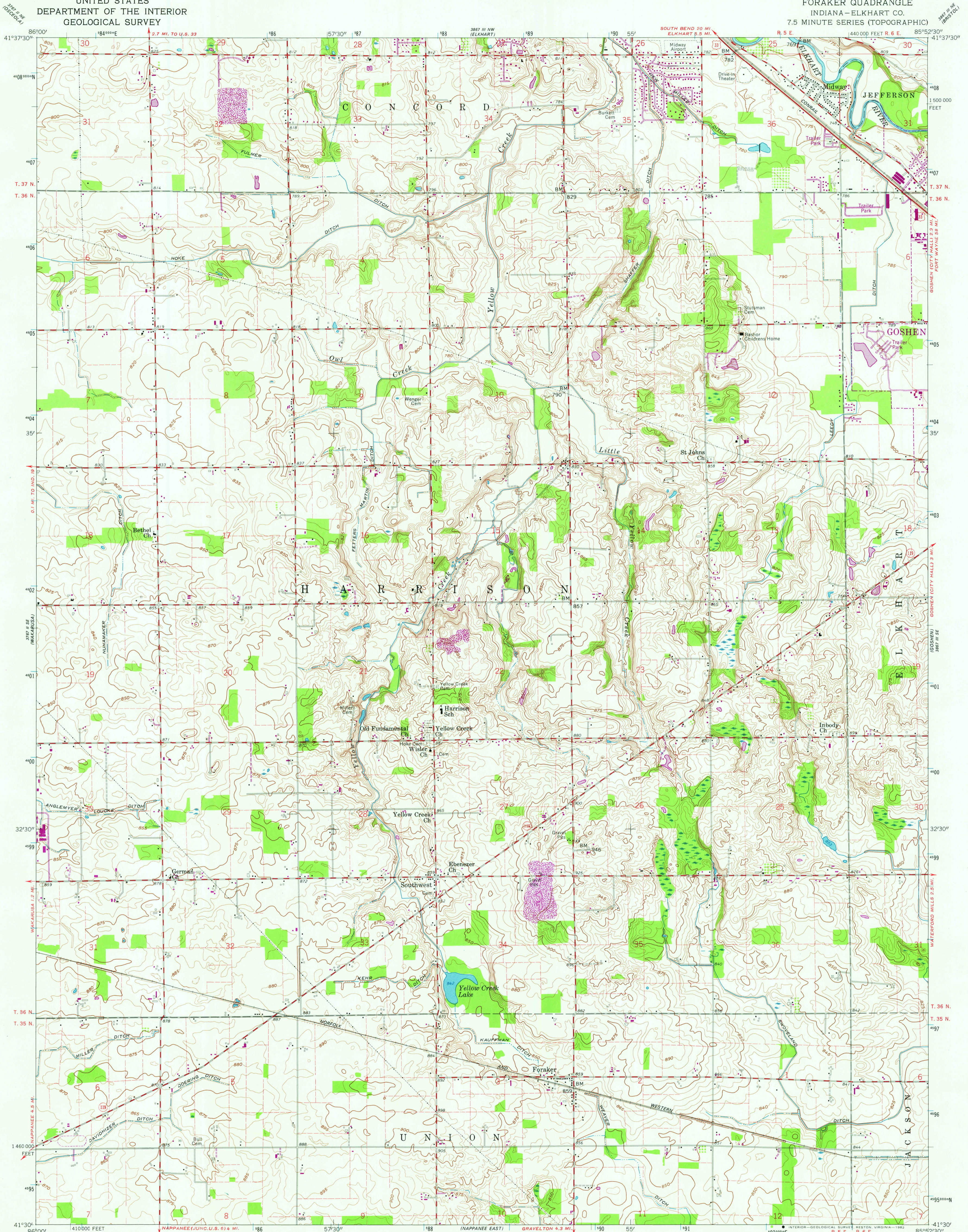


UNITED STATES  
DEPARTMENT OF THE INTERIOR  
GEOLOGICAL SURVEY

FORAKER QUADRANGLE  
INDIANA—ELKHART CO.  
7.5 MINUTE SERIES (TOPOGRAPHIC)



Mapped, edited, and published by the Geological Survey

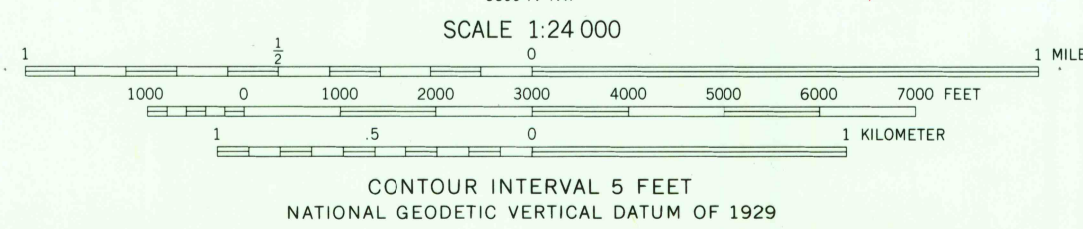
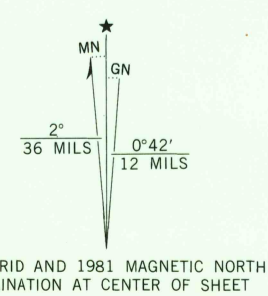
Control by USGS, NOS/NOAA, and Indiana Flood Control and Water Resources Commission

Culture and drainage in part compiled from aerial photographs taken 1957. Topography by planetable surveys 1959 and 1960

Polyconic projection. 10,000-foot grid ticks based on Indiana coordinate system, east zone. 1000-meter Universal Transverse Mercator grid ticks, zone 16, shown in blue. 1927 North American Datum To place on the predicted North American Datum 1983 move the projection lines 1 meter east as shown by dashed corner ticks

Fine red dashed lines indicate selected fence and field lines where generally visible on aerial photographs. This information is unchecked

Revisions shown in purple and woodland compiled in cooperation with State of Indiana agencies from aerial photographs taken 1980 and other sources. This information not field checked. Map edited 1981



THIS MAP COMPLIES WITH NATIONAL MAP ACCURACY STANDARDS  
FOR SALE BY U. S. GEOLOGICAL SURVEY, RESTON, VIRGINIA 22092  
AND INDIANA DEPARTMENT OF NATURAL RESOURCES, INDIANAPOLIS, INDIANA 46204  
A FOLDER DESCRIBING TOPOGRAPHIC MAPS AND SYMBOLS IS AVAILABLE ON REQUEST

ROAD CLASSIFICATION  
Heavy-duty ——— Light-duty ———  
Medium-duty ——— Unimproved dirt ———  
U. S. Route ——— State Route ———



FORAKER, IND.  
N4130-W8552.5/7.5  
1980  
PHOTOREVISED 1981  
DMA 3867 III SW-SERIES V851

SEP 22 1982

2378