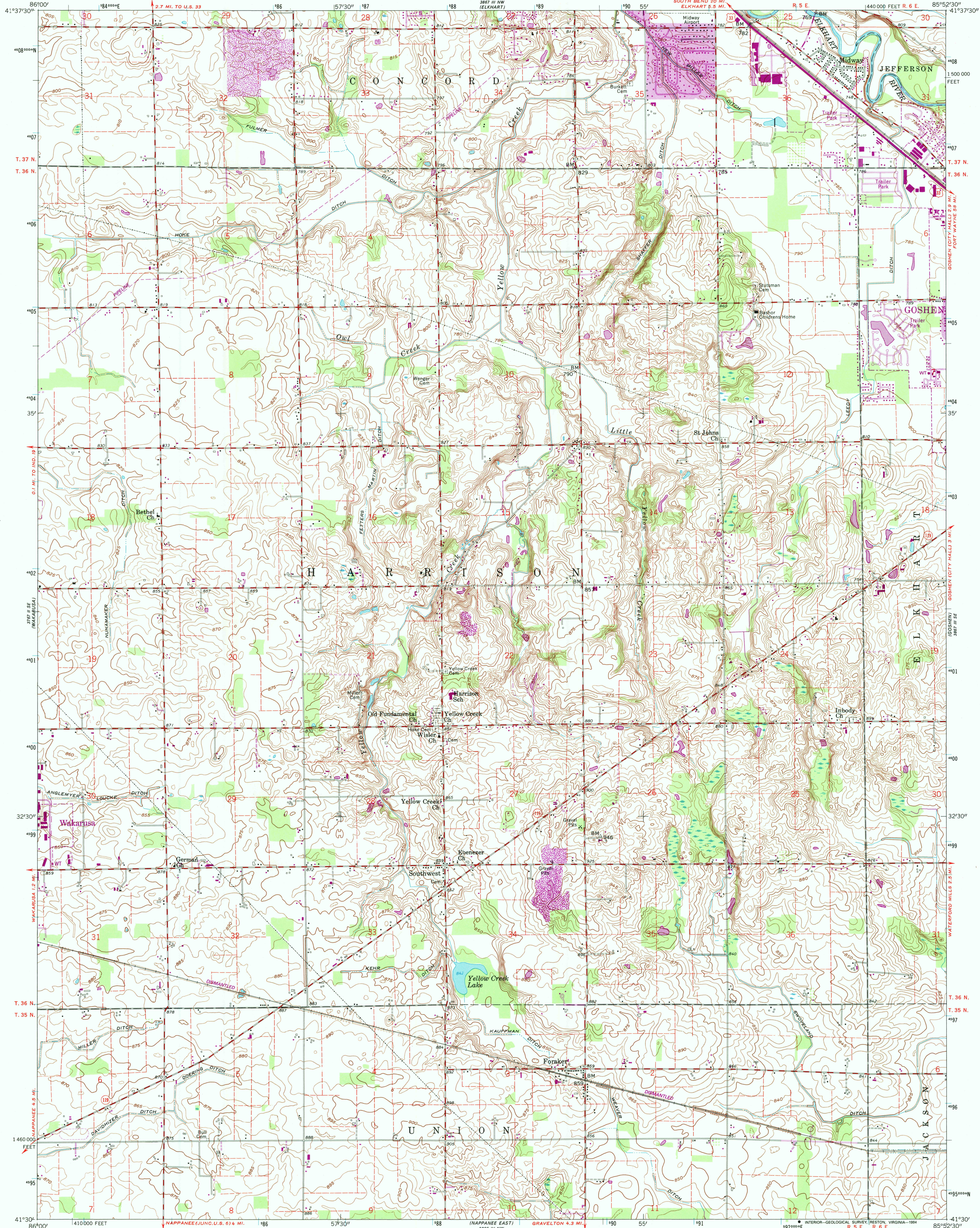
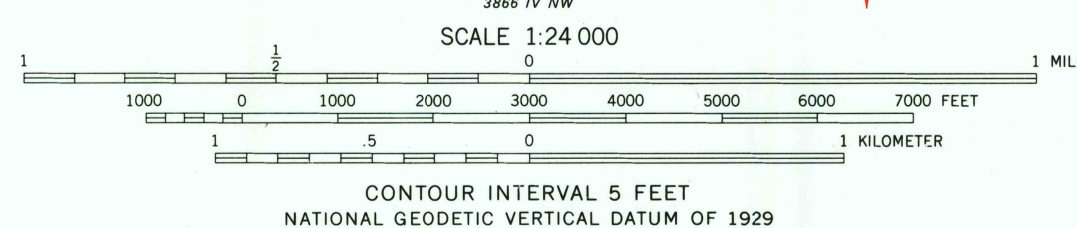
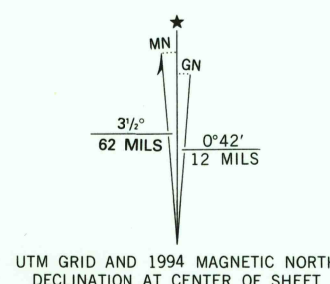


UNITED STATES
DEPARTMENT OF THE INTERIOR
GEOLOGICAL SURVEY

FORAKER QUADRANGLE
INDIANA—ELKHART CO.
7.5 MINUTE SERIES (TOPOGRAPHIC)



Produced by the United States Geological Survey
Control by USGS, NOS/NOAA, and Indiana Flood Control and
Water Resources Commission
Planimetry by photogrammetric methods from aerial photographs
taken 1957. Topography by planimetric surveys 1959-60
Projection and 10,000-foot grid ticks: Indiana coordinate
system, east zone (transverse Mercator)
1000-meter Universal Transverse Mercator grid ticks, zone 16, shown in blue
1927 North American Datum (NAD 27)
North American Datum of 1983 (NAD 83) is shown by dashed corner ticks
The values of the shift between NAD 27 and NAD 83 for 7.5-minute
intersections are given in USGS Bulletin 1875
Fine red dashed lines indicate selected fence and field lines where
generally visible on aerial photographs. This information is unchecked



THIS MAP COMPLIES WITH NATIONAL MAP ACCURACY STANDARDS
FOR SALE BY U.S. GEOLOGICAL SURVEY, DENVER, COLORADO 80225, OR RESTON, VIRGINIA 22092
AND INDIANA DEPARTMENT OF NATURAL RESOURCES, INDIANAPOLIS, INDIANA 46204
A FOLDER DESCRIBING TOPOGRAPHIC MAPS AND SYMBOLS IS AVAILABLE ON REQUEST

Revisions shown in purple compiled from aerial photographs
taken 1992 and other sources. This information not
field checked. Map edited 1994
Information shown in purple may not meet USGS content
standards and may conflict with previously mapped contours
Purple tint indicates extension of urban areas

ROAD CLASSIFICATION
Primary highway, hard surface
Secondary highway, hard surface
Unimproved road
Interstate Route
U.S. Route
State Route
Light-duty road, hard or improved surface



FORAKER, IND.
41085-E8-TF-024
1960
REVISED 1994
DMA 3867 III SW-SERIES V851

