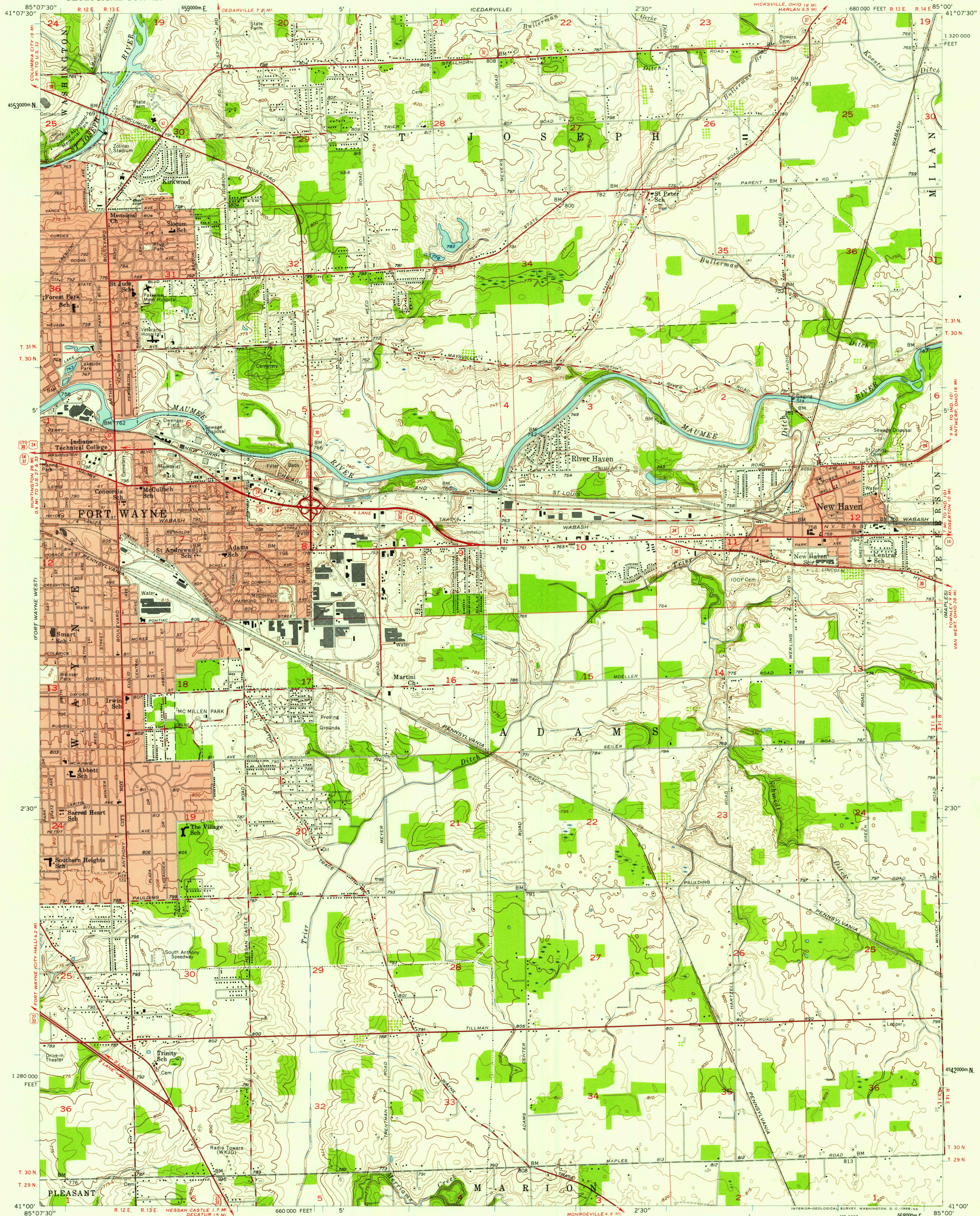


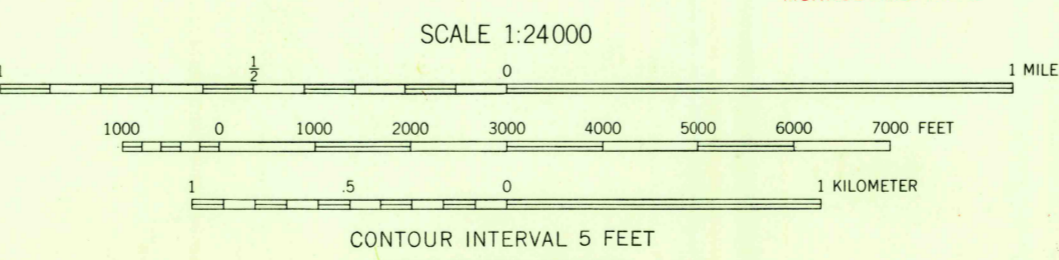
UNITED STATES
DEPARTMENT OF THE INTERIOR
GEOLOGICAL SURVEY

FORT WAYNE EAST QUADRANGLE
INDIANA—ALLEN CO.
7.5 MINUTE SERIES (TOPOGRAPHIC)



Mapped, edited, and published by the Geological Survey
Control by USGS, USCGS, and Indiana Flood Control and
Water Resources Commission
Culture and drainage in part compiled from aerial photographs
taken 1951. Topography by planetable surveys 1956
Polyconic projection. 1927 North American datum
10,000-foot grid based on Indiana coordinate system, east-zone
1000-meter Universal Transverse Mercator grid ticks,
zone 16, shown in blue
Red tint indicates areas in which only
landmark buildings are shown

TALE NORTH
MAGNETIC NORTH
APPROXIMATE MEAN
DECLINATION, 1956



THIS MAP COMPLIES WITH NATIONAL MAP ACCURACY STANDARDS
FOR SALE BY U. S. GEOLOGICAL SURVEY, WASHINGTON 25, D. C.
AND INDIANA DEPARTMENT OF CONSERVATION, INDIANAPOLIS, INDIANA
A FOLDER DESCRIBING TOPOGRAPHIC MAPS AND SYMBOLS IS AVAILABLE ON REQUEST

USGS
Historical File
Topographic Division



ROAD CLASSIFICATION	
Heavy-duty	Light-duty
Medium-duty	Unimproved dirt
U. S. Route	State Route

FORT WAYNE EAST, IND.
N4100—W8500/7.5

1956

U.S.G.S.
FILE COPY
TOPOGRAPHIC DIVISION

APR 23 1958

3929