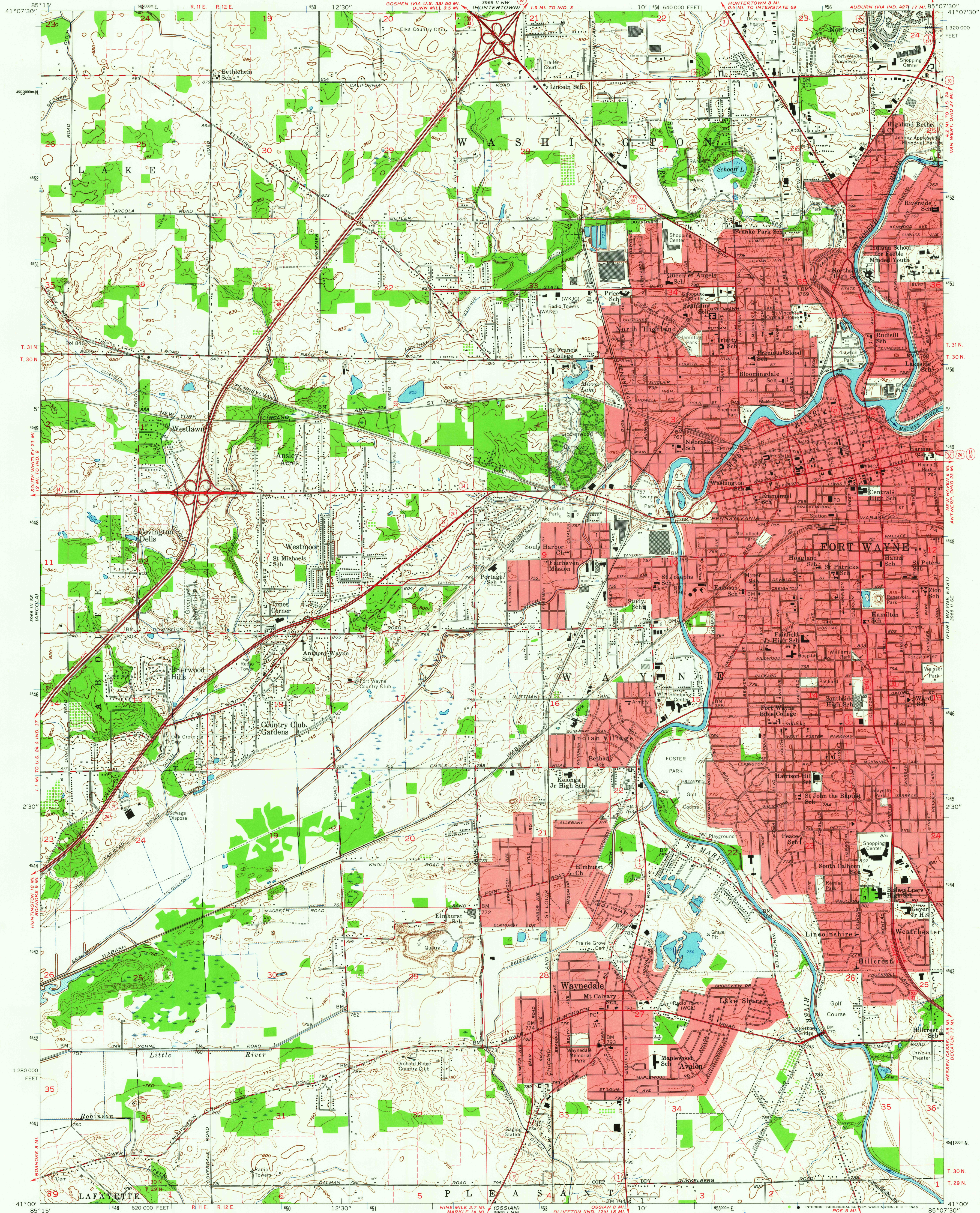
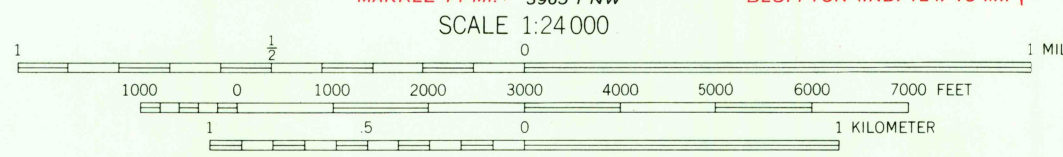


UNITED STATES
DEPARTMENT OF THE INTERIOR
GEOLOGICAL SURVEY

FORT WAYNE WEST QUADRANGLE
INDIANA—ALLEN CO.
7.5 MINUTE SERIES (TOPOGRAPHIC)



Mapped, edited, and published by the Geological Survey
Revised in cooperation with Indiana Department of Conservation
Control by USGS, USC&GS, and Indiana Flood Control and
Water Resources Commission
Planimetry by photogrammetric methods from aerial photographs taken
1951. Topography by planetable surveys 1956. Revised 1963
Polyconic projection. 1927 North American datum
10,000-foot grid based on Indiana coordinate system, east zone
1000-meter Universal Transverse Mercator grid ticks,
zone 16, shown in blue
Fine red dashed lines indicate selected fence and field lines where
generally visible on aerial photographs. This information is unchecked
Red tint indicates areas in which only landmark buildings are shown



THIS MAP COMPLIES WITH NATIONAL MAP ACCURACY STANDARDS
FOR SALE BY U. S. GEOLOGICAL SURVEY, WASHINGTON, D. C. 20242
AND INDIANA DEPARTMENT OF CONSERVATION, INDIANAPOLIS, INDIANA
A FOLDER DESCRIBING TOPOGRAPHIC MAPS AND SYMBOLS IS AVAILABLE ON REQUEST

USGS
Historical File
Topographic Division

ROAD CLASSIFICATION
Heavy-duty ——— Light-duty ———
Medium-duty ——— Unimproved dirt ———
Interstate Route — U. S. Route — State Route

FORT WAYNE, WEST, IND.
N4100—W8507.5/7.5

1963
AMS 3966 II SW—SERIES V851

MAY 2 5 1965

U.S.G.S.
FILM COPY
TOPOGRAPHIC DIVISION