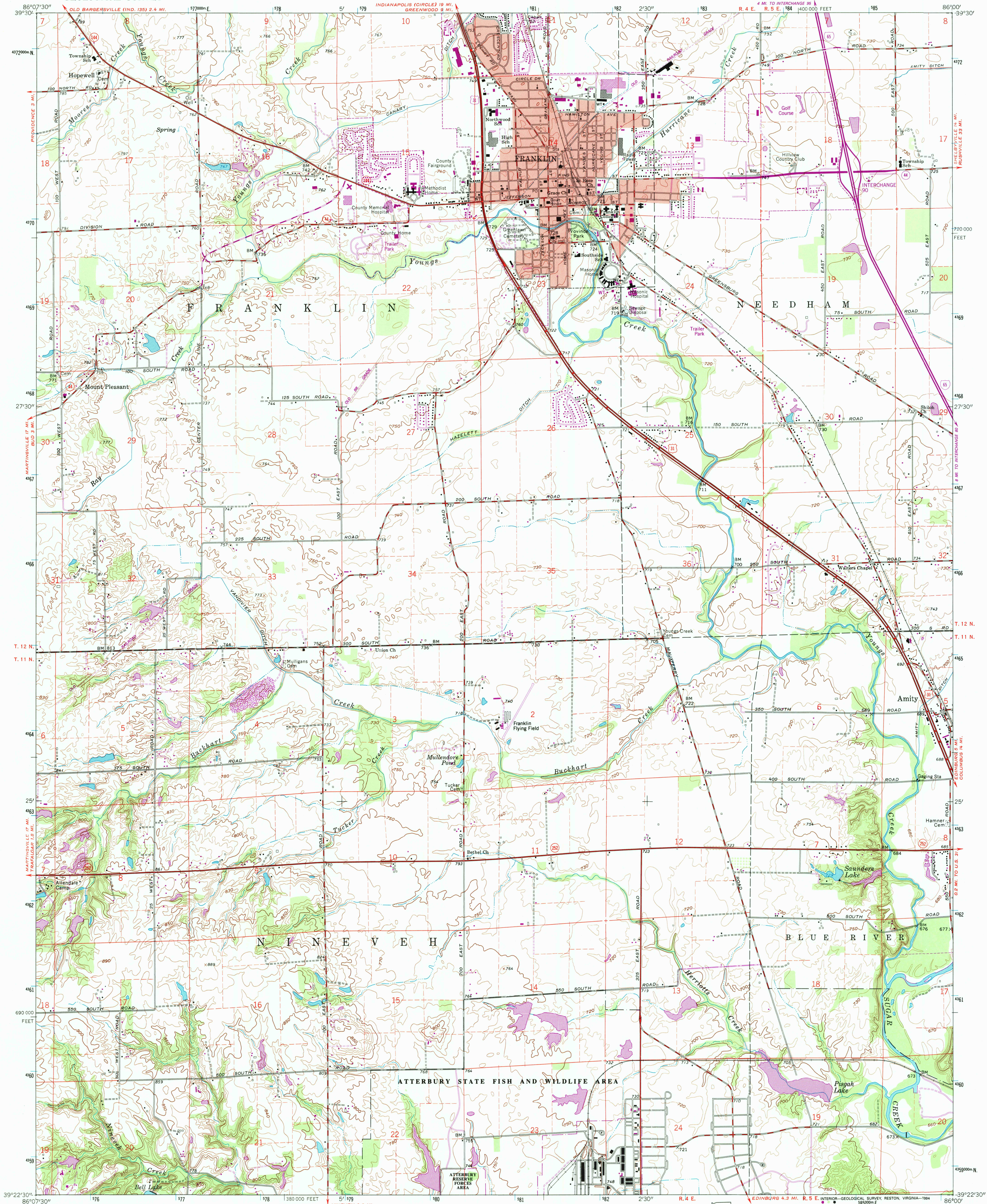


UNITED STATES  
DEPARTMENT OF THE INTERIOR  
GEOLOGICAL SURVEY

FRANKLIN QUADRANGLE  
INDIANA—JOHNSON CO.  
7.5 MINUTE SERIES (TOPOGRAPHIC)



Produced by the U. S. Geological Survey  
Revised in cooperation with State of Indiana  
Department of Natural Resources  
Control by USGS and NOS/NOAA  
Planimetry by photogrammetric methods from aerial photographs  
taken 1944. Topography by planimetric surveys 1946-47. Revised 1961  
Projection and 10,000-foot grid ticks: Indiana coordinate  
system, east zone (transverse Mercator)  
1000-meter Universal Transverse Mercator grid ticks, zone 16, shown in blue  
1927 North American Datum (NAD 27)  
North American Datum of 1983 (NAD 83) is shown by dashed corner ticks  
The values of the shift between NAD 27 and NAD 83 for 7.5-minute  
intersections are given in USGS Bulletin 1875  
There may be private inholdings within the boundaries of  
the National or State reservations shown on this map  
Photorevised from 1992 source; no major culture or drainage  
changes observed. Boundaries and names revised 1994

Revisions shown in purple compiled in cooperation with State of  
Indiana agencies from aerial photographs taken 1984 and other  
source data. This information not field checked. Map edited 1988

THIS MAP COMPLIES WITH NATIONAL MAP ACCURACY STANDARDS  
FOR SALE BY U. S. GEOLOGICAL SURVEY, DENVER, COLORADO 80225 OR RESTON, VIRGINIA 22092,  
AND INDIANA DEPARTMENT OF NATURAL RESOURCES, INDIANAPOLIS, INDIANA 46204  
A FOLDER DESCRIBING TOPOGRAPHIC MAPS AND SYMBOLS IS AVAILABLE ON REQUEST

1	2	3
4	5	6
7	8	

ADJOINING 7.5' QUADRANGLE NAMES

1	Bargersville
2	Greenwood
3	Boggs
4	Tralgar
5	Marion
6	Beaumont
7	Nineveh
8	Edinburg

ROAD CLASSIFICATION  
Primary highway, hard surface  
Secondary highway, hard surface  
Light-duty road, hard or improved surface  
Unimproved road  
Interstate Route  
U. S. Route  
State Route

FRANKLIN, IND.  
39086-D1-TF-024

1961  
PHOTOREVISED 1988  
MINOR REVISION 1994  
DMA 3762 1 NE—SERIES V851

