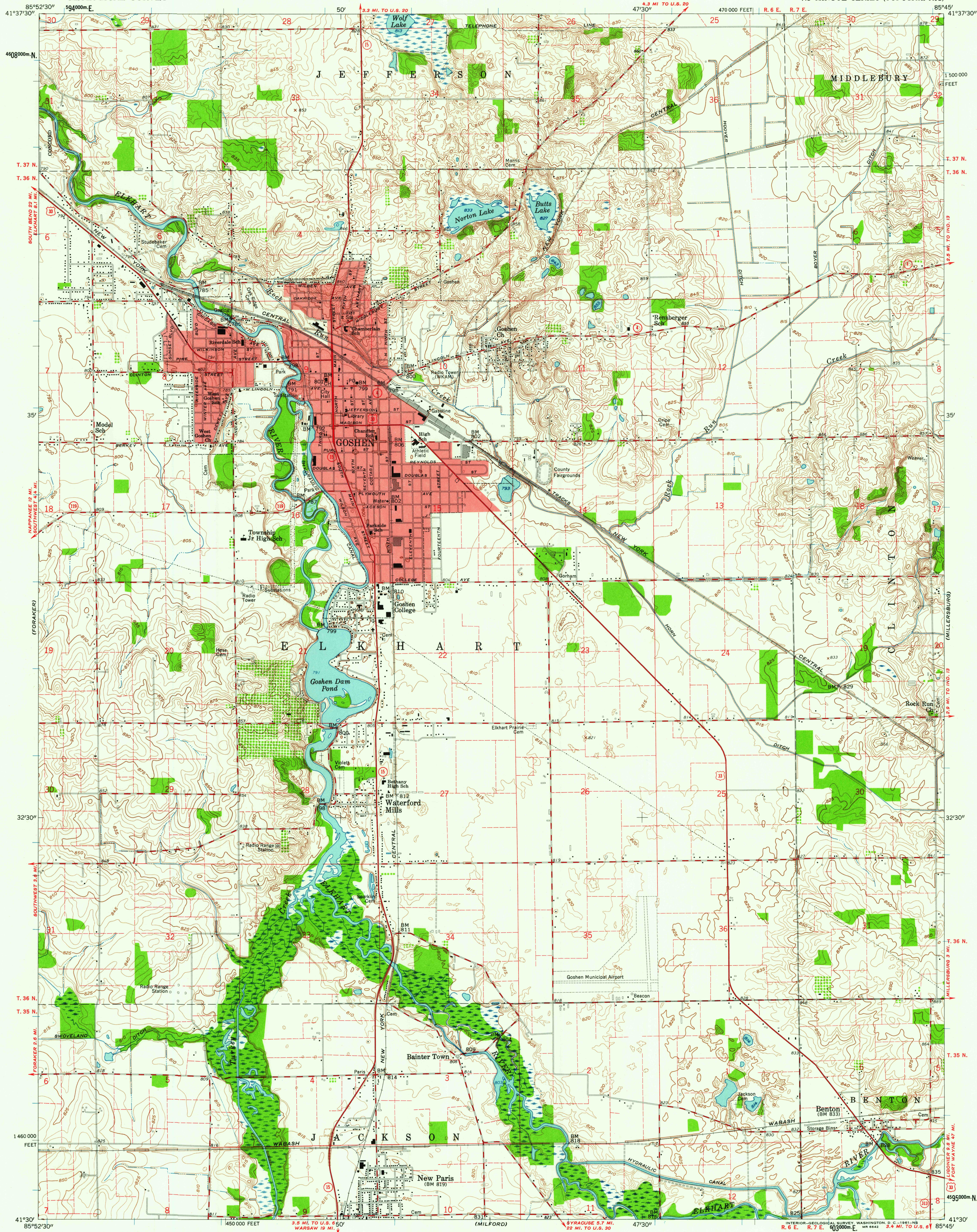


UNITED STATES
DEPARTMENT OF THE INTERIOR
GEOLOGICAL SURVEY

GOSHEN QUADRANGLE
INDIANA—ELKHART CO.
7.5 MINUTE SERIES (TOPOGRAPHIC)



Mapped, edited, and published by the Geological Survey

Control by USGS, USC&GS, and Indiana Flood Control and
Water Resources Commission

Culture and drainage in part compiled from aerial photographs
taken 1957. Topography by planimeter surveys 1959

Polyconic projection. 1927 North American datum
10,000-foot grid based on Indiana coordinate system, east zone
1000-meter Universal Transverse Mercator grid ticks,
zone 16, shown in blue

Fine red dashed lines indicate selected fence and field lines where
generally visible on aerial photographs. This information is unchecked

Red tint indicates areas in which only landmark buildings are shown

TRUE NORTH

MAGNETIC NORTH

APPROXIMATE MEAN
DECLINATION, 1959

SCALE 1:24,000

1 0 1000 2000 3000 4000 5000 6000 7000 FEET

1 0 1 KILOMETER

CONTOUR INTERVAL 5 FEET
DATUM IS MEAN SEA LEVEL

THIS MAP COMPLIES WITH NATIONAL MAP ACCURACY STANDARDS
FOR SALE BY U.S. GEOLOGICAL SURVEY, WASHINGTON 25, D. C.
AND INDIANA DEPARTMENT OF CONSERVATION, INDIANAPOLIS, INDIANA
A FOLDER DESCRIBING TOPOGRAPHIC MAPS AND SYMBOLS IS AVAILABLE ON REQUEST

USGS
Historical File
Topographic Division



QUADRANGLE LOCATION

ROAD CLASSIFICATION
Heavy-duty ——— Light-duty ———
Medium-duty ——— Unimproved dirt ———
U.S. Route ——— State Route ———

USGS
FILE COPY
TOPOGRAPHIC DIVISION

GOSHEN, IND.

N4130—W8545/7.5

1959

JUL 14 1961

2415