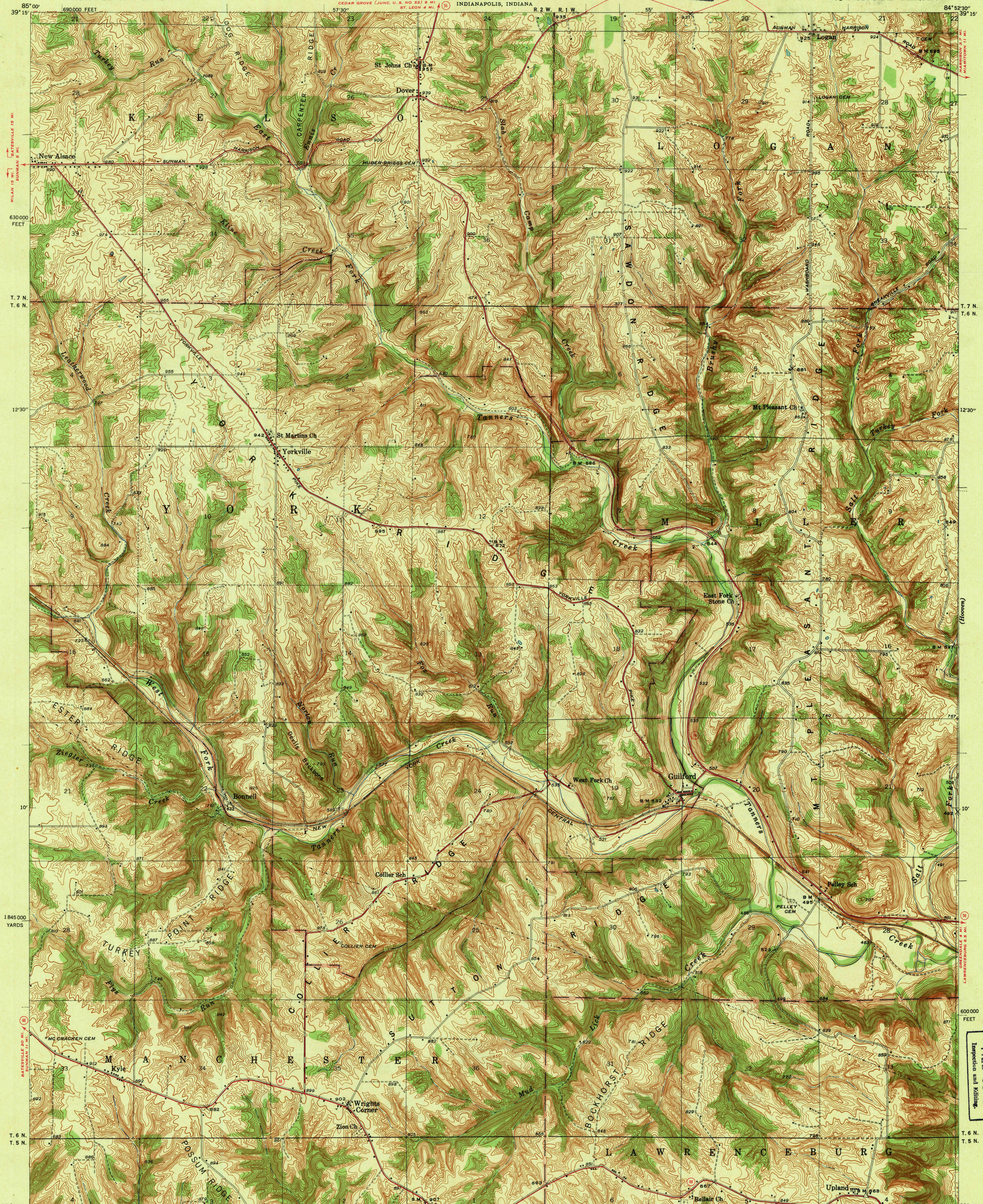


UNITED STATES
DEPARTMENT OF THE INTERIOR
GEOLOGICAL SURVEY

STATE OF INDIANA
DEPARTMENT OF CONSERVATION
DIVISION OF GEOLOGY
INDIANAPOLIS, INDIANA

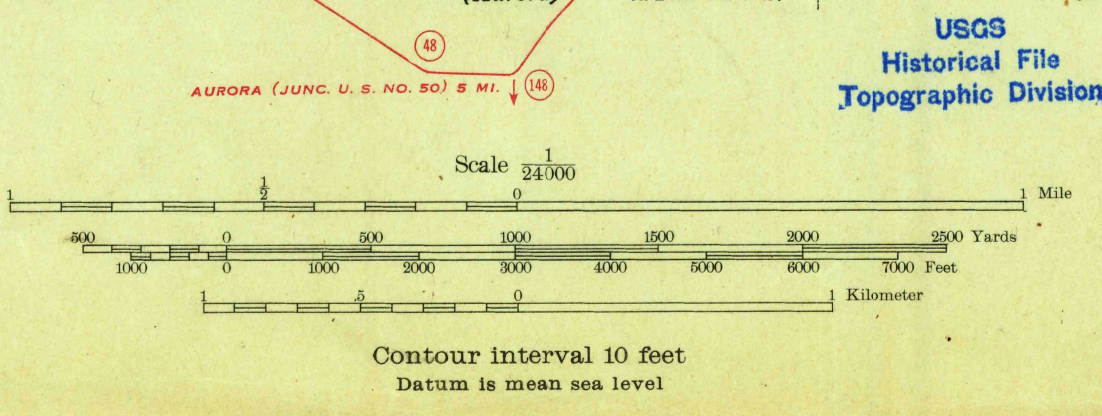
U. S. G. S.
FILE COPY
Inspection and Editing.

INDIANA
(DEARBORN COUNTY)
GUILFORD QUADRANGLE
7½-MINUTE SERIES



Topography by S. D. Farmer, W. D. Ehrich,
C. W. Hoff, and R. J. Scott
Surveyed in 1941

TRUE NORTH
MAGNETIC NORTH
APPROXIMATE MEAN
DECLINATION, 1941



LAWRENCEBURG 3.2 MI.
CINCINNATI (CIVIC CENTER) 28 MI.
Polyconic projection. 1927 North American datum
5000 yard grid based on U. S. zone system, B
10000 foot grid based on Indiana (East)
rectangular coordinate system

GUILFORD, IND.
Edition of 1943
N3907.5-W8452.5/7.5

AUG 26 1943

3095