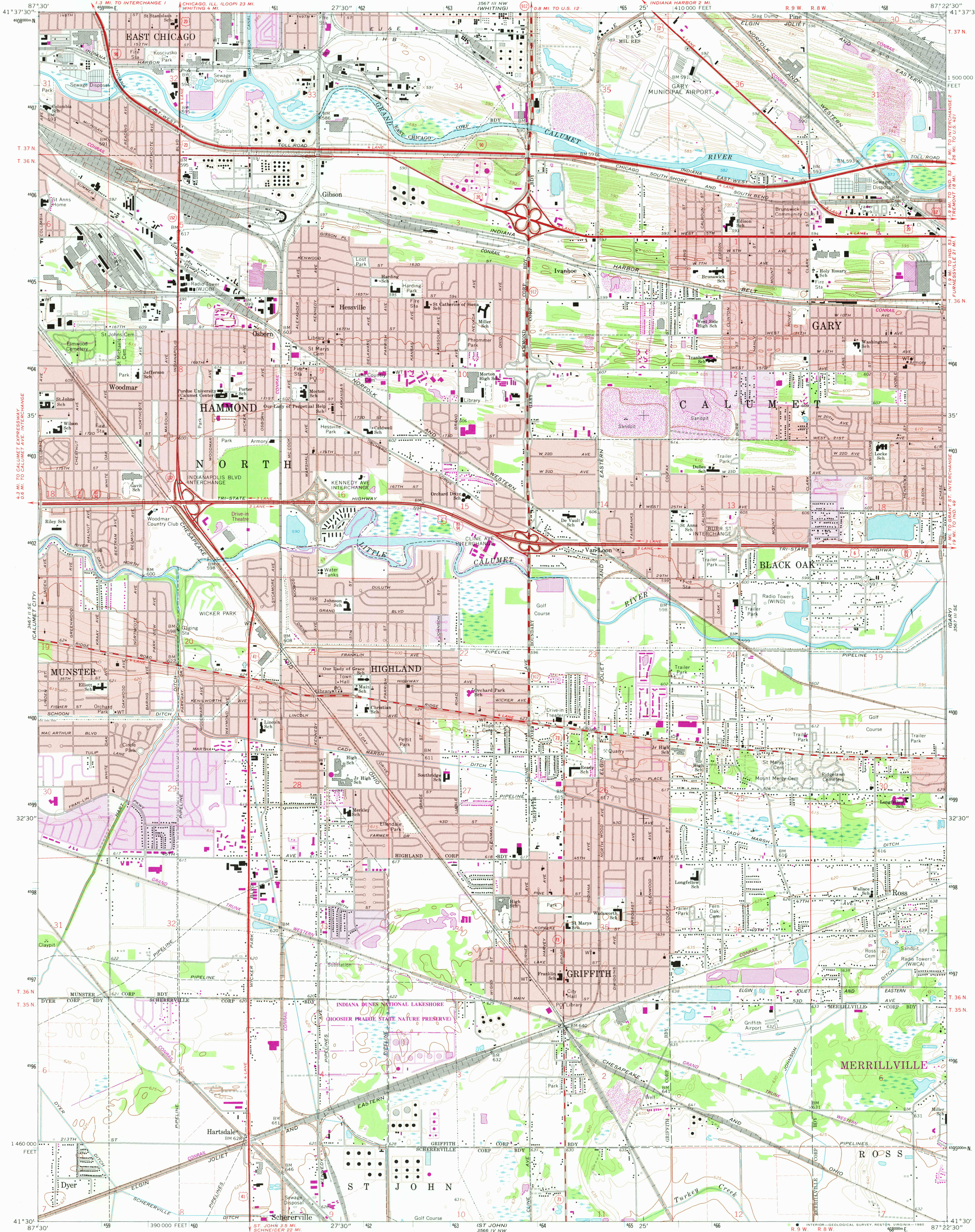


UNITED STATES
DEPARTMENT OF THE INTERIOR
GEOLOGICAL SURVEY

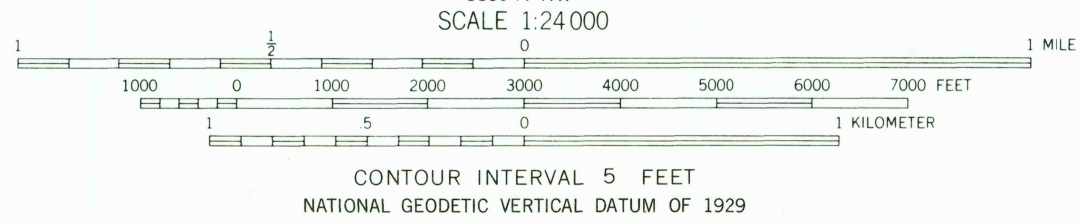
STATE OF INDIANA
DEPARTMENT OF NATURAL RESOURCES
INDIANAPOLIS, INDIANA

HIGHLAND QUADRANGLE
INDIANA-LAKE CO.
7.5 MINUTE SERIES (TOPOGRAPHIC)
SW/4 TOLLESTON 15' QUADRANGLE



Mapped, edited, and published by the Geological Survey
Control by USGS, NOS/NOAA, and Indiana Flood Control
and Water Resources Commission
Planimetry by photogrammetric methods from aerial photographs
taken 1951. Topography by planimetric surveys 1953. Revised
from aerial photographs taken 1967. Field checked 1968.
Polyconic projection. 10,000-foot grid ticks based
on Indiana coordinate system, west zone
1000-meter Universal Transverse Mercator grid ticks,
zone 16, shown in blue. 1927 North American Datum
To place on the predicted North American Datum 1983
move the projection lines 1 meter north and
4 meters east as shown by dashed corner ticks.
Fine red dashed lines indicate selected fence and field lines where
generally visible on aerial photographs. This information not checked.
Red tint indicates areas in which only landmark buildings are shown.
There may be private inholdings within the boundaries of
the National or State reservations shown on this map.

UTM GRID AND 1980 MAGNETIC NORTH
DECLINATION AT CENTER OF SHEET
15° 9' 17" 5 MILS
0° 17' 5 MILS



THIS MAP COMPLIES WITH NATIONAL MAP ACCURACY STANDARDS
FOR SALE BY U.S. GEOLOGICAL SURVEY, RESTON, VIRGINIA 22092
AND INDIANA DEPARTMENT OF NATURAL RESOURCES, INDIANAPOLIS, INDIANA 46204
A FOLDER DESCRIBING TOPOGRAPHIC MAPS AND SYMBOLS IS AVAILABLE ON REQUEST

Revisions shown in purple compiled in cooperation with State of
Indiana agencies from aerial photographs taken 1977 and other
source data. This information not field checked. Map edited 1980
Purple tint indicates extension of urban areas

ROAD CLASSIFICATION
Primary highway, all weather, hard surface
Secondary highway, all weather, hard surface
Light duty road, all weather, improved surface
Unimproved road, fair or dry weather
Interstate Route
U.S. Route
State Route

USGS
Historical File
Topographic Division
HIGHLAND, IND.
N4130-W8722.5/7.5
1968
PHOTOREVISED 1980
DMA 5567 III SW-SERIES V851

JAN 29 1981
2050