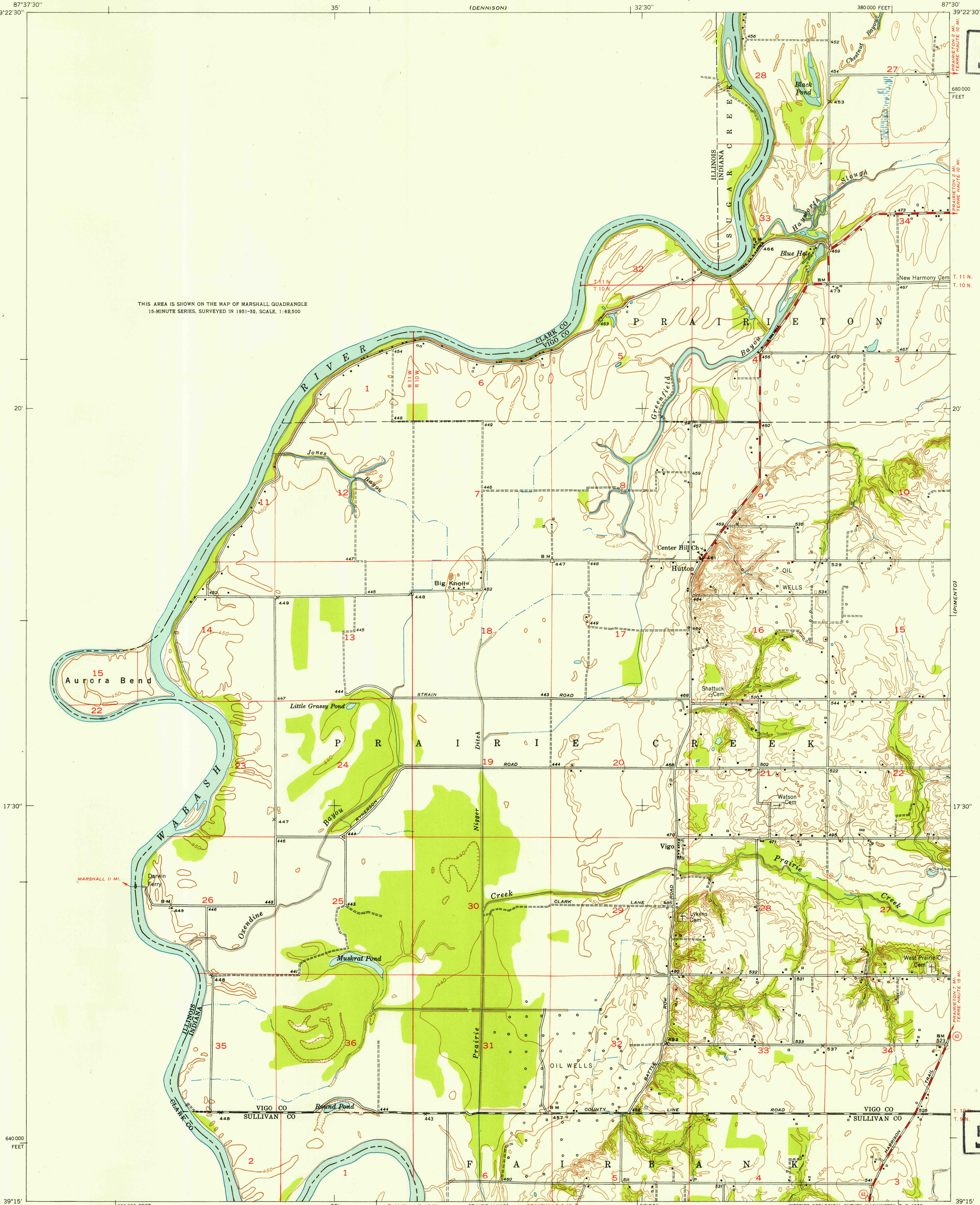


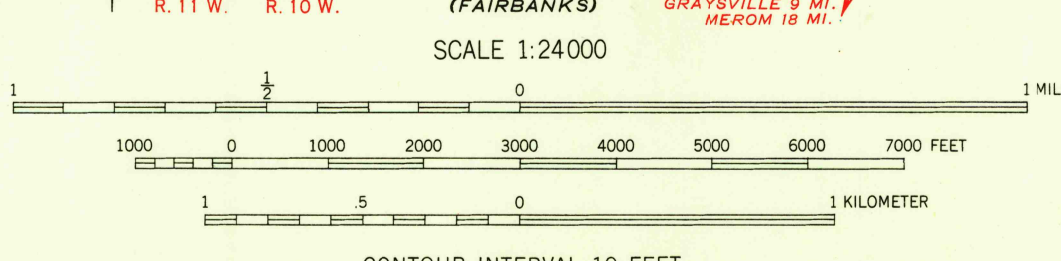
U. S. G. S.
FILE COPY
Inspection and Editing

THIS AREA IS SHOWN ON THE MAP OF MARSHALL QUADRANGLE
15-MINUTE SERIES, SURVEYED IN 1931-32, SCALE, 1:62,500



U. S. G. S.
FILE COPY
Inspection and Editing

Mapped, edited, and published by the Geological Survey
Control by USGS and USC&GS
Topography by plane-table surveys 1939
Revised by Indiana Geological Survey 1952
Polyconic projection, 1927 North American datum
10,000-foot grid based on Indiana coordinate system,
west zone



USGS
Historical File
Topographic Division

ROAD CLASSIFICATION
Heavy-duty 4 LANE (6 LANE) Light-duty
Medium-duty 4 LANE (6 LANE) Unimproved dirt
U. S. Route State Route



FOR SALE BY U. S. GEOLOGICAL SURVEY, WASHINGTON 25, D. C.
AND INDIANA DEPARTMENT OF CONSERVATION, INDIANAPOLIS, INDIANA
A FOLDER DESCRIBING TOPOGRAPHIC MAPS AND SYMBOLS IS AVAILABLE ON REQUEST

HUTTON, IND.-ILL.
N 3915-W 8730/7.5

1952

MAR 10 1953

2640