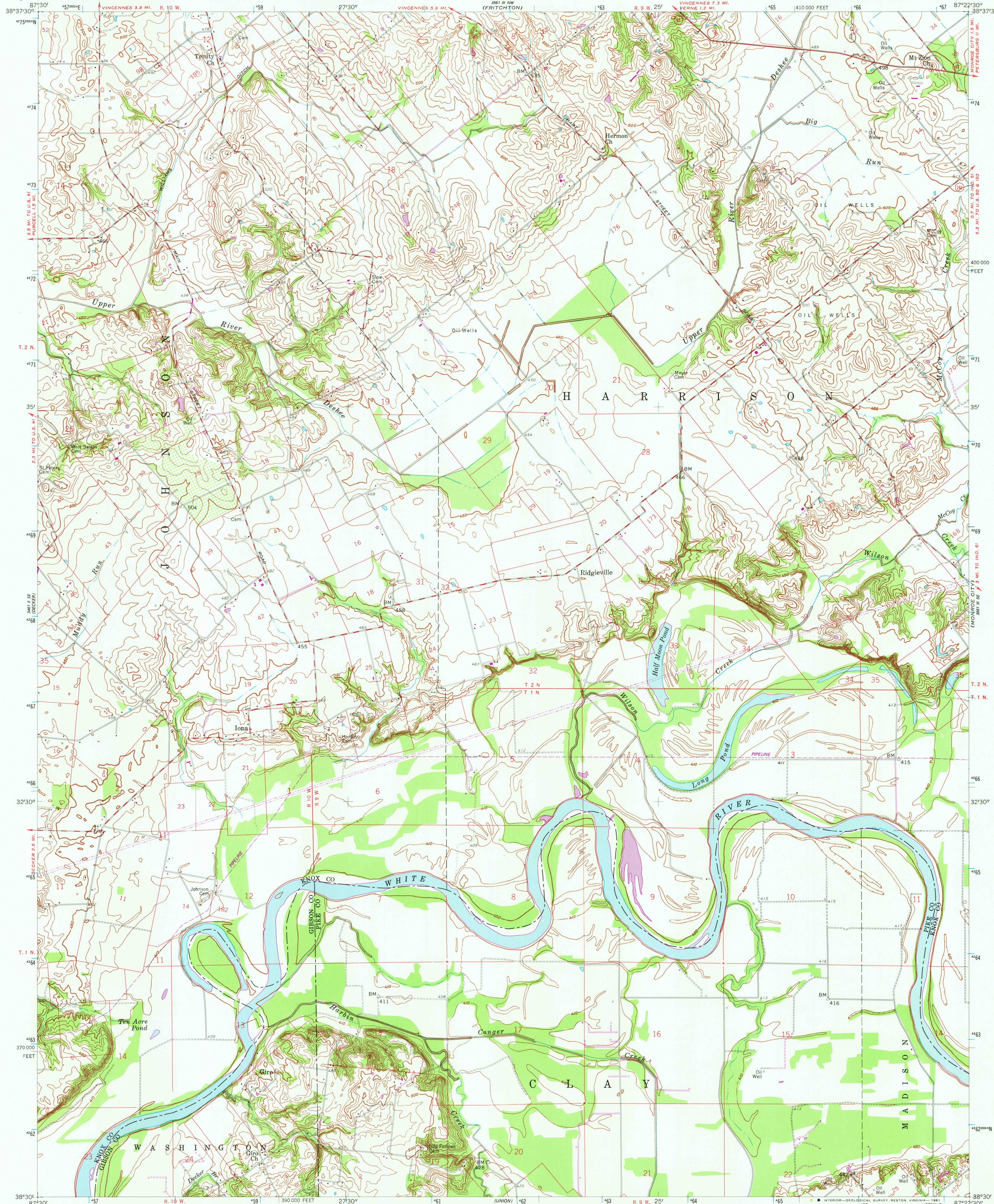


UNITED STATES
DEPARTMENT OF THE INTERIOR
GEOLOGICAL SURVEY

IONA QUADRANGLE
INDIANA
7.5 MINUTE SERIES (TOPOGRAPHIC)



Mapped, edited, and published by the Geological Survey
Control by USGS and USCE

Topography by planetable surveys 1931 and 1942. Revised 1958

Polyconic projection

10,000-foot grid based on Indiana coordinate system, west zone

1000-meter Universal Transverse Mercator grid ticks,

zone 16, shown in blue. 1927 North American Datum

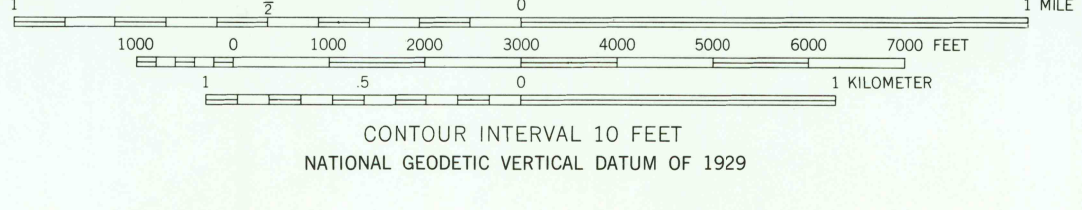
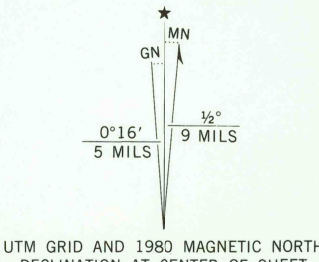
To place on the predicted North American Datum 1983

move the projection lines 2 meters south and

2 meters east as shown by dashed corner ticks

Dotted land lines established by private surveys

Revisions shown in purple compiled in cooperation with State of
Indiana agencies from aerial photographs taken 1977 and other
source data. This information not field checked. Map edited 1980



THIS MAP COMPLIES WITH NATIONAL MAP ACCURACY STANDARDS
FOR SALE BY U. S. GEOLOGICAL SURVEY, RESTON, VIRGINIA 22092
AND INDIANA DEPARTMENT OF NATURAL RESOURCES, INDIANAPOLIS, INDIANA 46204
A FOLDER DESCRIBING TOPOGRAPHIC MAPS AND SYMBOLS IS AVAILABLE ON REQUEST

ROAD CLASSIFICATION
Heavy-duty ——— Light-duty ———
Medium-duty ——— Unimproved dirt ———
State Route ○



USGS
HISTORICAL FILE
NATIONAL MAPS DIVISION

IONA, IND.

N 3830—W 8722.5/7.5

1958

PHOTOREVISED 1980
DMA 5561 III SW-SERIES V851

JUN 19 1981
2600