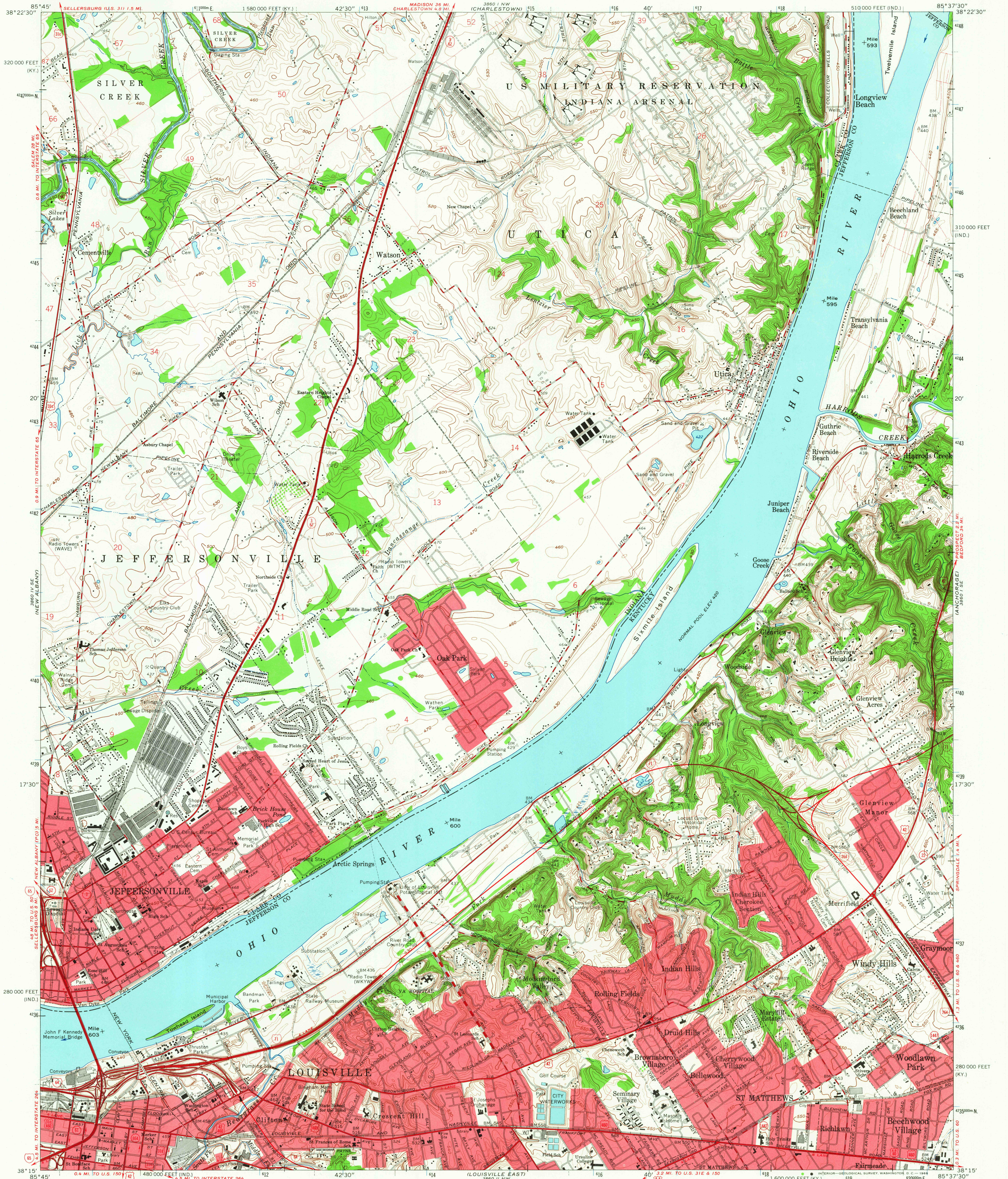
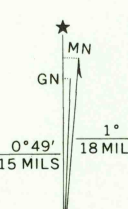


UNITED STATES
DEPARTMENT OF THE INTERIOR
GEOLOGICAL SURVEY

JEFFERSONVILLE QUADRANGLE
INDIANA-KENTUCKY
7.5 MINUTE SERIES (TOPOGRAPHIC)
SW/4 PROSPECT 15' QUADRANGLE



Mapped, edited, and published by the Geological Survey in cooperation with Indiana Department of Natural Resources and Kentucky Geological Survey.
Revised in cooperation with Kentucky Geological Survey Control by USGS, USC&GS, USCE, and the City of Louisville. Topography in Indiana by planetable surveys 1937. Topography in Kentucky by photogrammetric methods from aerial photographs taken 1949. Field checked 1950. Entire map revised 1965.
Polyconic projection 1927 North American datum. 10,000-foot grids based on Indiana coordinate system, east zone, and Kentucky coordinate system, north zone. 1000-meter Universal Transverse Mercator grid ticks, zone 16, shown in blue.
Fine red dashed lines indicate selected fence and field lines where generally visible on aerial photographs. This information is uncorrected.
The state boundary as shown represents the approximate position of the low water line as determined from U.S. Corps of Engineers Ohio River charts, surveyed 1911-1912, and supplementary information. Red tint indicates areas in which only landmark buildings are shown. Indiana area lies within Clark Military Grant. Dotted land lines established by private survey.



THIS MAP COMPLES WITH NATIONAL MAP ACCURACY STANDARDS FOR SALE BY U.S. GEOLOGICAL SURVEY, WASHINGTON, D.C. 20242.
INDIANA DEPARTMENT OF NATURAL RESOURCES, INDIANAPOLIS, INDIANA, KENTUCKY GEOLOGICAL SURVEY, LEXINGTON, KENTUCKY, AND KENTUCKY DEPARTMENT OF COMMERCE, FRANKFORT, KENTUCKY. A FOLDER DESCRIBING TOPOGRAPHIC MAPS AND SYMBOLS IS AVAILABLE ON REQUEST.

USGS
Historical File
Topographic Division

U.S.G.S. JEFFERSONVILLE, IND.-KY.
SW/4 PROSPECT 15' QUADRANGLE
N3815-W8537.5/7.5
1965
TOPOGRAPHIC DIVISION AMS 3860 1 SW-SERIES V851

ROAD CLASSIFICATION
Heavy-duty ——— Light-duty ———
Medium-duty ——— Unimproved dirt ———
Interstate Route U.S. Route State Route

4215
NOV 2 1966