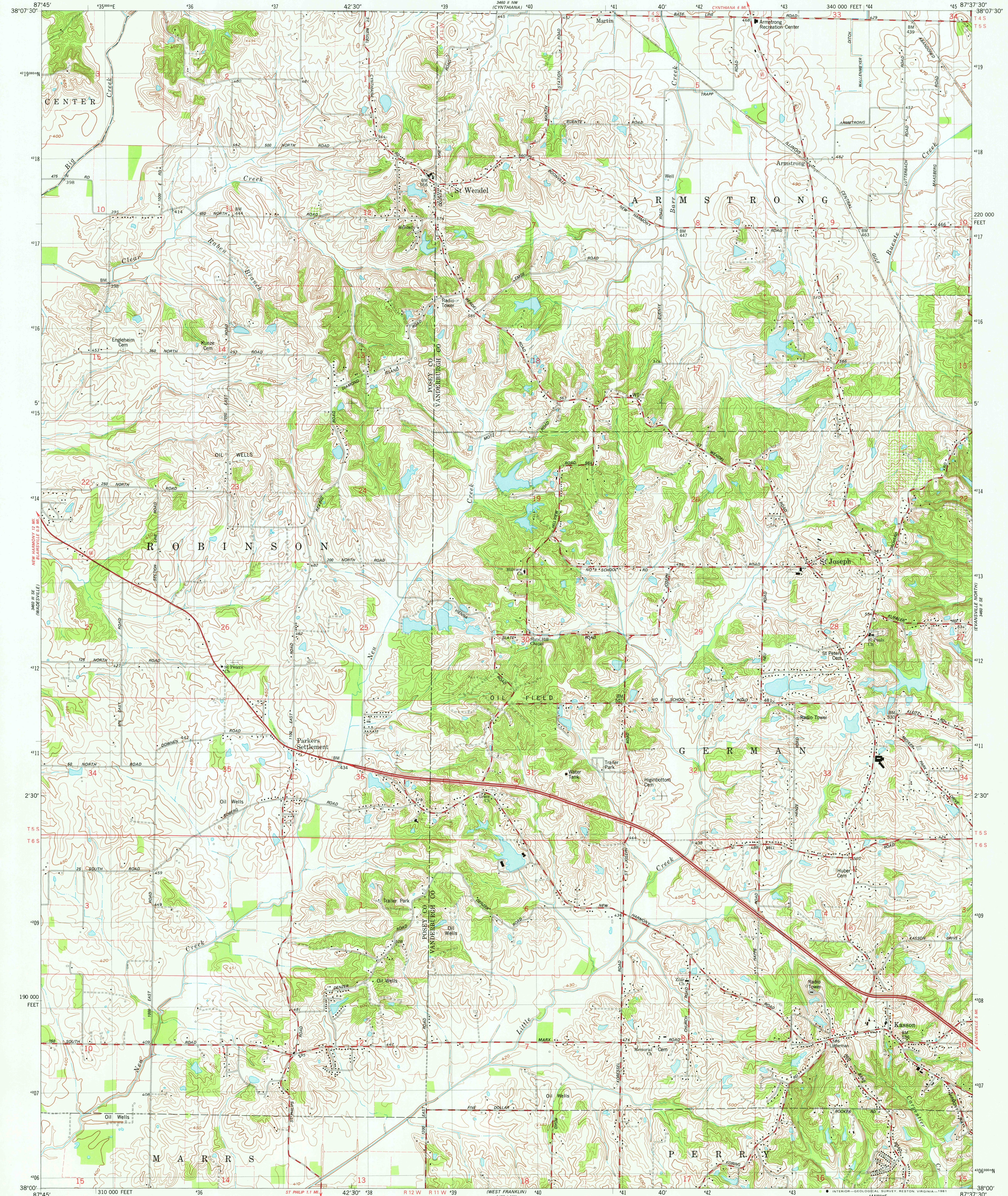


UNITED STATES
DEPARTMENT OF THE INTERIOR
GEOLOGICAL SURVEY

KASSON QUADRANGLE
INDIANA
7.5 MINUTE SERIES (TOPOGRAPHIC)

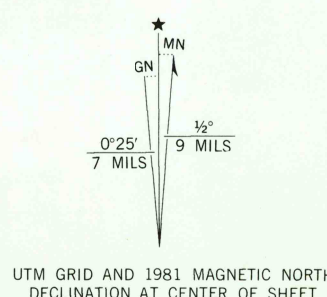


Mapped, edited, and published by the Geological Survey
in cooperation with Indiana Department of Natural Resources
Control by USGS and NOS/NOAA

Topography by photogrammetric methods from aerial photographs
taken 1958. Field checked 1961. Revised from aerial photographs
taken 1973. Field checked 1976. Map edited 1981

Polyconic projection. 10,000-foot grid ticks based
on Indiana coordinate system, west zone
1000-meter Universal Transverse Mercator grid, zone 16
1927 North American Datum
To place on the predicted North American Datum 1983
move the projection lines 3 meters south and
2 meters east as shown by dashed corner ticks

Fine red dashed lines indicate selected fence and field lines where
generally visible on aerial photographs. This information is unchecked



UTM GRID AND 1981 MAGNETIC NORTH
DECLINATION AT CENTER OF SHEET

SCALE 1:24,000
0 1000 2000 3000 4000 5000 6000 7000 FEET
0 1 2 3 4 5 6 7 KILOMETER
CONTOUR INTERVAL 10 FEET
NATIONAL GEODETIC VERTICAL DATUM OF 1929

THIS MAP COMPLIES WITH NATIONAL MAP ACCURACY STANDARDS
FOR SALE BY U. S. GEOLOGICAL SURVEY, RESTON, VIRGINIA 22092.
AND INDIANA DEPARTMENT OF NATURAL RESOURCES, INDIANAPOLIS, INDIANA 46204
A FOLDER DESCRIBING TOPOGRAPHIC MAPS AND SYMBOLS IS AVAILABLE ON REQUEST



QUADRANGLE LOCATION

ROAD CLASSIFICATION
Primary highway, hard surface
Secondary highway, hard surface
Unimproved road
Light-duty road, hard or improved surface
Unimproved road
Interstate Route
U. S. Route
State Route

KASSON, IND.
N3800-W8737.5/7.5

1981

DMA 3460 II SW-SERIES V851

JAN 4 1982