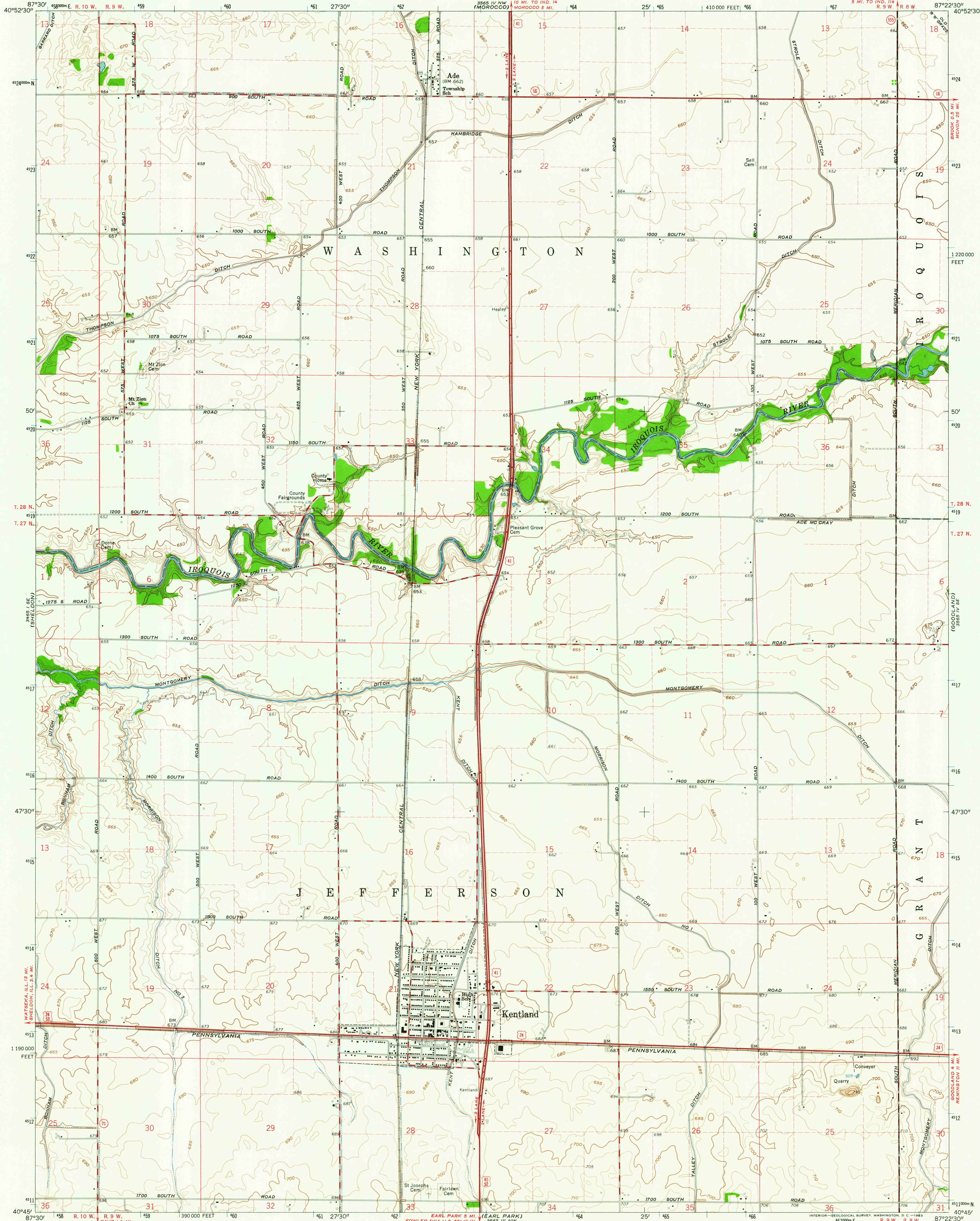
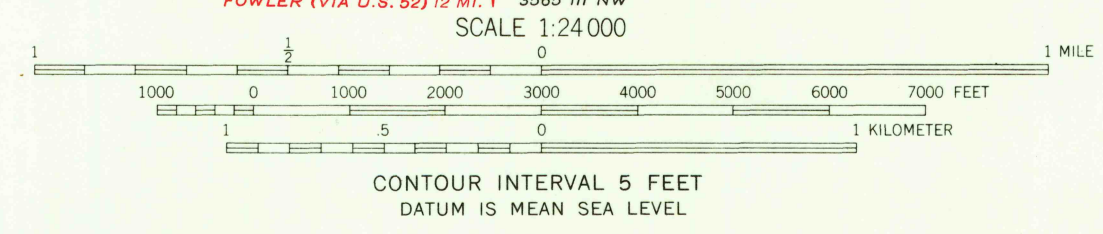
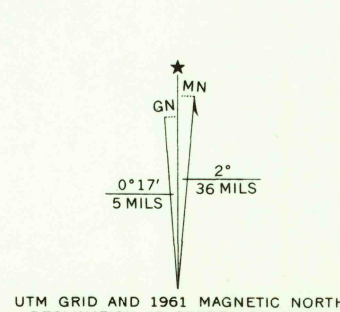


UNITED STATES  
DEPARTMENT OF THE INTERIOR  
GEOLOGICAL SURVEY

KENTLAND QUADRANGLE  
INDIANA-NEWTON CO.  
7.5 MINUTE SERIES (TOPOGRAPHIC)



Mapped, edited, and published by the Geological Survey  
Control by USGS, USC&GS, and Indiana Flood Control and  
Water Resources Commission  
Planimetry by photogrammetric methods from aerial photographs  
taken 1959. Topography by planetable surveys 1961  
Polyconic projection. 1927 North American datum  
10,000-foot grid based on Indiana coordinate system, west zone  
1000-meter Transverse Mercator grid ticks,  
zone 16, shown in blue  
Fine red dashed lines indicate selected fence and field lines where  
generally visible on aerial photographs. This information is unchecked



USGS  
Historical Files  
Topographic Division



ROAD CLASSIFICATION  
Heavy-duty ——— Light-duty ———  
Medium-duty ——— Unimproved dirt ———  
U.S. Route ——— State Route ———

KENTLAND, IND.  
N4045-W8722.5/7.5

1961  
AMS 3565 IV SW-SERIES V851

THIS MAP COMPLIES WITH NATIONAL MAP ACCURACY STANDARDS  
FOR SALE BY U.S. GEOLOGICAL SURVEY, WASHINGTON 25, D. C.  
AND INDIANA DEPARTMENT OF CONSERVATION, INDIANAPOLIS, INDIANA  
A FOLDER DESCRIBING TOPOGRAPHIC MAPS AND SYMBOLS IS AVAILABLE ON REQUEST

2680