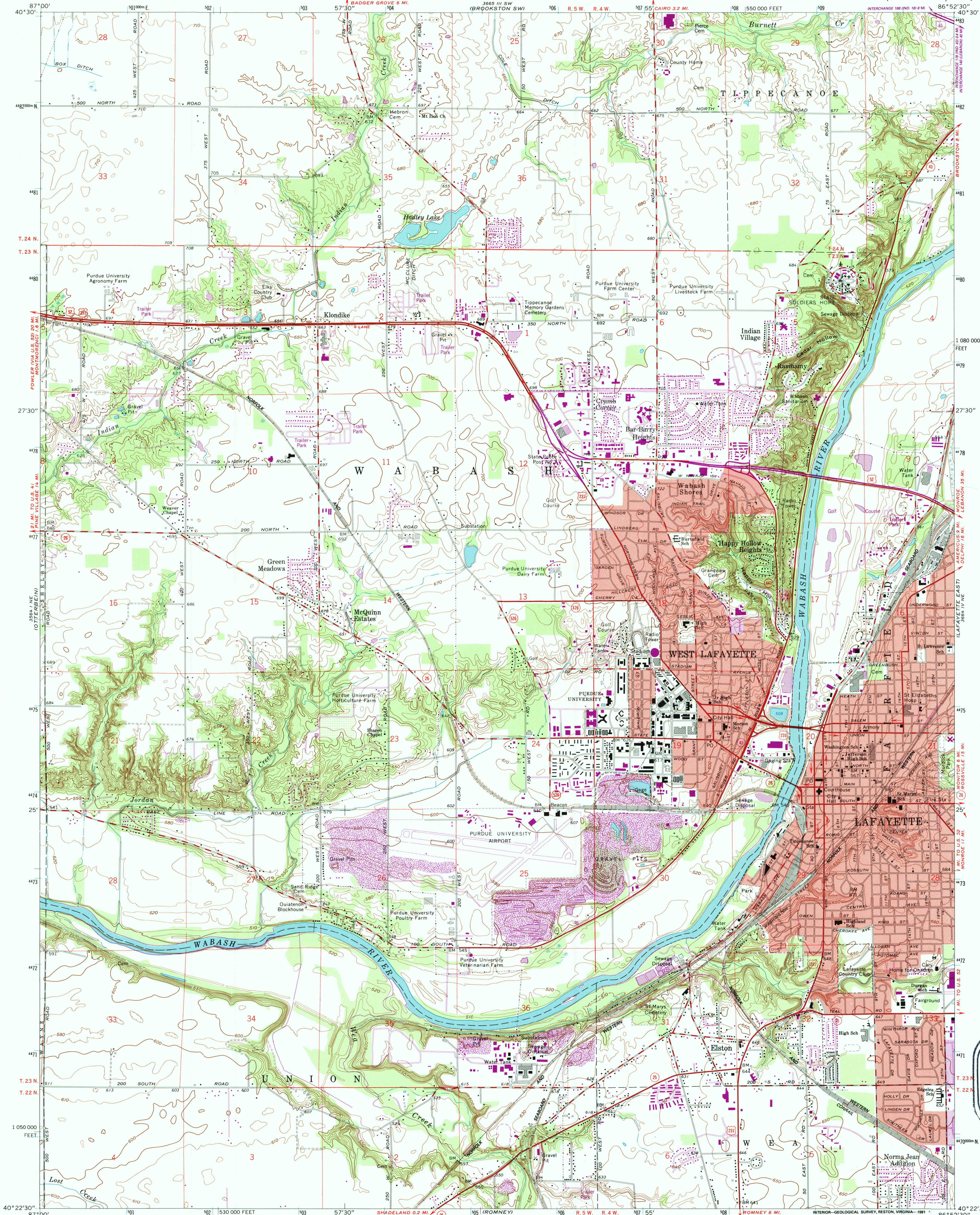


UNITED STATES
DEPARTMENT OF THE INTERIOR
GEOLOGICAL SURVEY

LAFAYETTE WEST QUADRANGLE
INDIANA—TIPPECANOE CO.
7.5 MINUTE SERIES (TOPOGRAPHIC)



Mapped, edited, and published by the Geological Survey in cooperation with State of Indiana Department of Natural Resources

Control by USGS, NOS/NOAA, and Indiana Flood Control and Water Resources Commission

Topography by planetable surveys 1940. Revised 1961

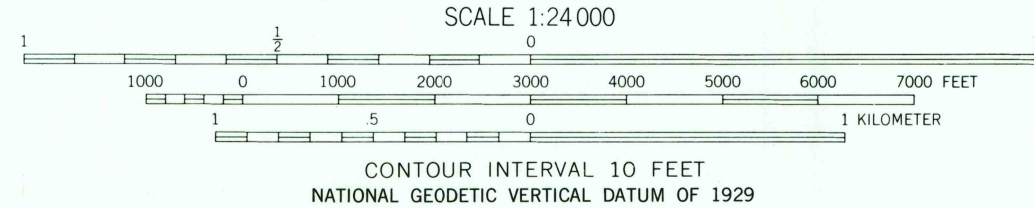
Polyconic projection. 10,000-foot grid ticks based on Indiana coordinate system, west zone. 1000-meter Universal Transverse Mercator grid ticks, zone 16, shown in blue

1927 North American Datum

The difference between 1927 North American Datum and North American Datum of 1983 (NAD 83) for 7.5-minute intersections is given in USGS Bulletin 1875. The NAD 83 is shown by dashed corner ticks

Red tint indicates areas in which only landmark buildings are shown

Map photostereoscopic 1987
No major culture or drainage changes observed



THIS MAP COMPLIES WITH NATIONAL MAP ACCURACY STANDARDS FOR SALE BY U.S. GEOLOGICAL SURVEY
DENVER, COLORADO 80225 OR RESTON, VIRGINIA 22092
AND INDIANA DEPARTMENT OF NATURAL RESOURCES, INDIANAPOLIS, INDIANA 46204
A FOLDER DESCRIBING TOPOGRAPHIC MAPS AND SYMBOLS IS AVAILABLE ON REQUEST

ROAD CLASSIFICATION	
Primary highway, hard surface	Light-duty road, hard or improved surface
Secondary highway, hard surface	Unimproved road
Interstate Route	U.S. Route
	State Route

Revisions shown in purple and woodland compiled in cooperation with State of Indiana agencies from aerial photographs taken in 1981 and other sources. This information not field checked. Map edited 1986
Purple tint indicates extension of urban areas

LAFAYETTE WEST, IND.
40086-D8-TF-024
PHOTOINSPECTED 1987
1961
PHOTOREVISED 1986
DMA 3664 IV NW—SERIES V851

USGS AND HISTORICAL
MAP ARCHIVES
SEP 13 1995
REC'D FILE COPY

