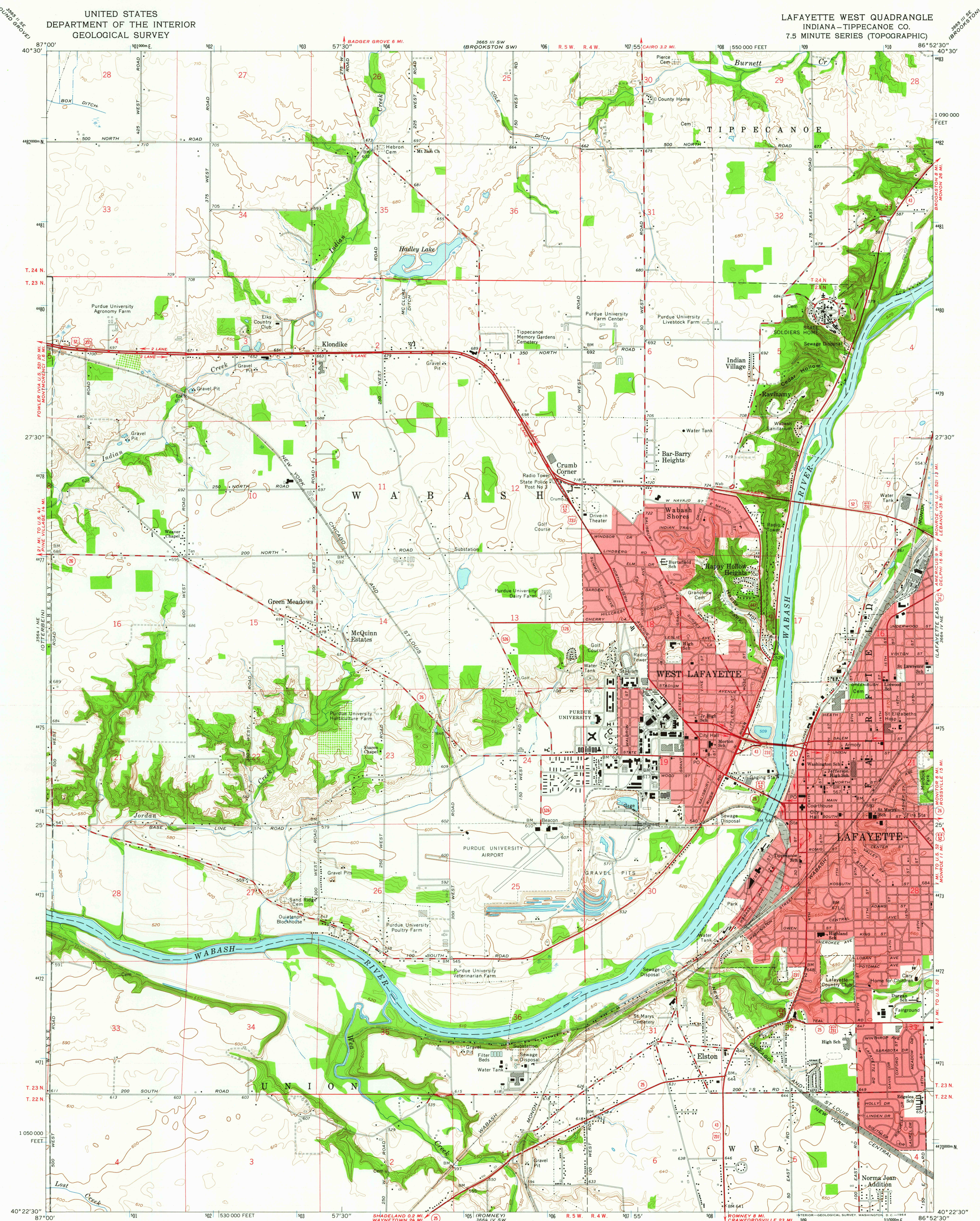
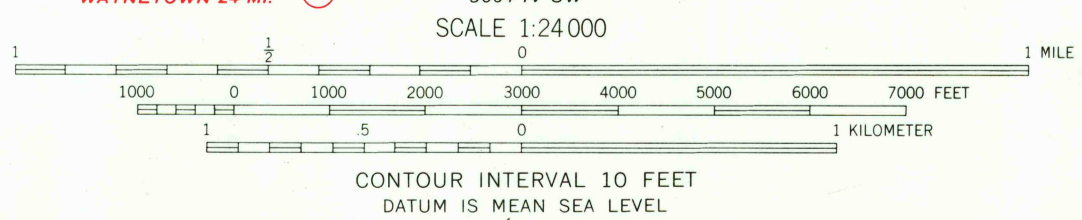
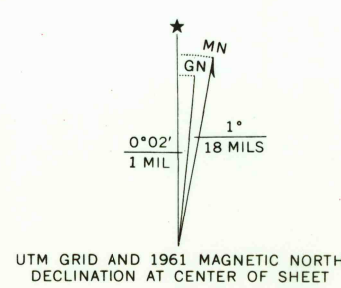


UNITED STATES  
DEPARTMENT OF THE INTERIOR  
GEOLOGICAL SURVEY

LAFAYETTE WEST QUADRANGLE  
INDIANA-TIPPECANOE CO.  
7.5 MINUTE SERIES (TOPOGRAPHIC)



Mapped, edited, and published by the Geological Survey  
in cooperation with State of Indiana Department of Conservation  
Control by USGS, USGS&GS, USCE, and Indiana Flood Control and  
Water Resources Commission  
Topography by planetable surveys 1940. Revised 1961  
Polyconic projection. 1927 North American datum  
10,000-foot grid based on Indiana coordinate system, west zone  
1000-meter Universal Transverse Mercator grid ticks,  
zone 16, shown in blue  
Red tint indicates areas in which only landmark buildings are shown



USGS  
Historical File  
Topographic Division

ROAD CLASSIFICATION  
Heavy-duty ——— Light-duty ———  
Medium-duty ——— Unimproved dirt ———  
U. S. Route ——— State Route ———



LAFAYETTE WEST, IND.  
N4022.5—W8652.5/7.5

1961

AMS 3664 IV NW—SERIES V851

JAN 28 1964

3625