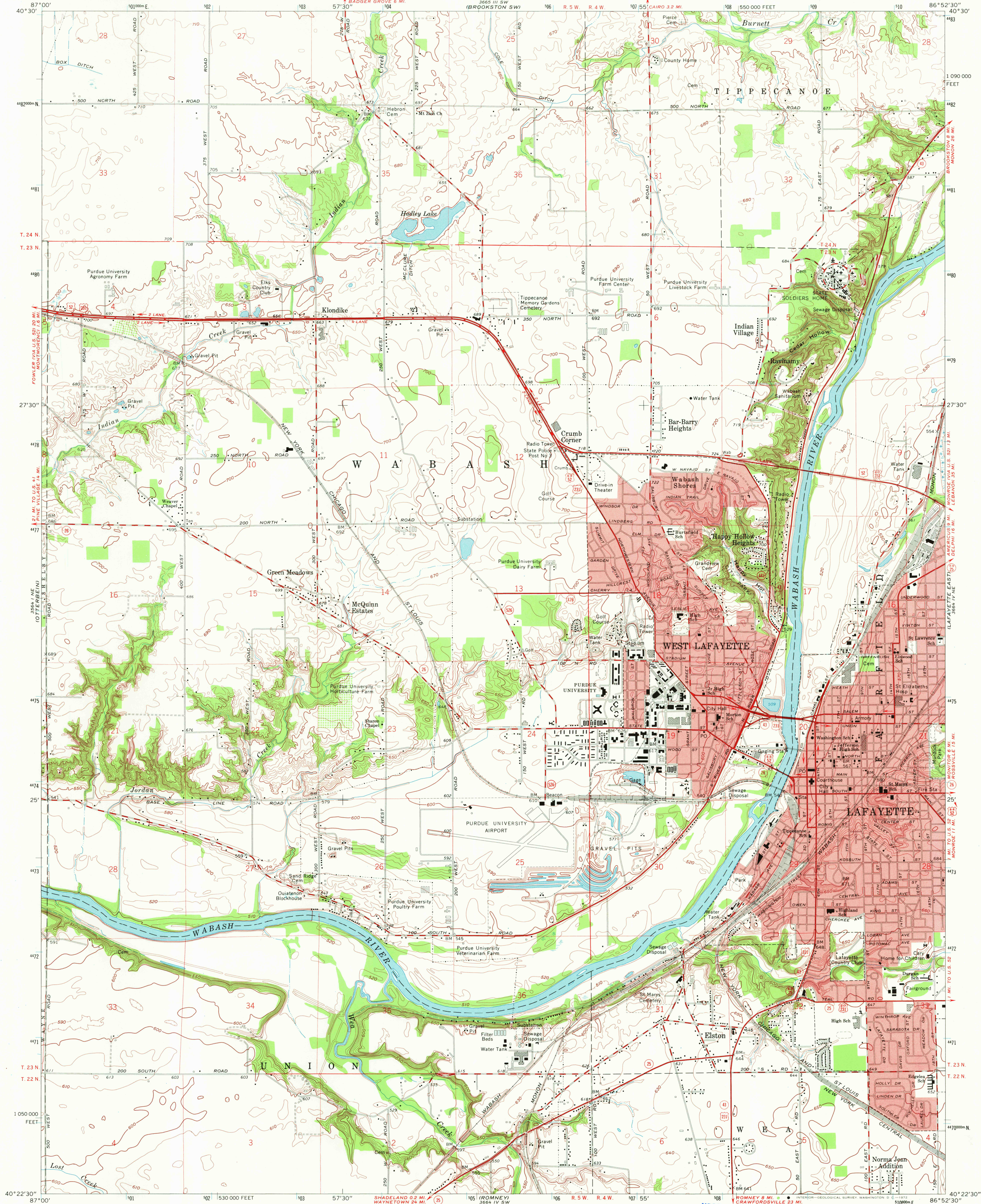
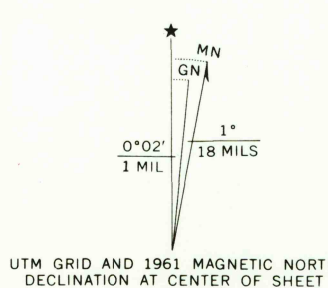


UNITED STATES
DEPARTMENT OF THE INTERIOR
GEOLOGICAL SURVEY

LAFAYETTE WEST QUADRANGLE
INDIANA-TIPPECANOE CO.
7.5 MINUTE SERIES (TOPOGRAPHIC)



Mapped, edited, and published by the Geological Survey
in cooperation with State of Indiana Department of Conservation
Control by USGS, USC&GS, USCE, and Indiana Flood Control and
Water Resources Commission
Topography by planetable surveys 1940. Revised 1961
Polyconic projection. 1927 North American datum.
10,000-foot grid based on Indiana coordinate system, west zone
1000-meter Universal Transverse Mercator grid ticks,
zone 16, shown in blue
Red tint indicates areas in which only landmark buildings are shown



USGS
Historical File
Topographic Division

SCALE 1:24,000

CONTOUR INTERVAL 10 FEET
DATUM IS MEAN SEA LEVEL



ROAD CLASSIFICATION

Heavy-duty ——— Light-duty ———
Medium-duty ——— Unimproved dirt ———

U.S. Route — State Route —

FOR SALE BY U.S. GEOLOGICAL SURVEY, WASHINGTON, D. C. 20242
AND INDIANA DEPARTMENT OF NATURAL RESOURCES, INDIANAPOLIS, INDIANA 46204
A FOLDER DESCRIBING TOPOGRAPHIC MAPS AND SYMBOLS IS AVAILABLE ON REQUEST

LAFAYETTE WEST, IND.
N4022.5-W8652.5/7.5

1961
AMS 3664 IV NW-SERIES V851

JUN 27 1972

4555