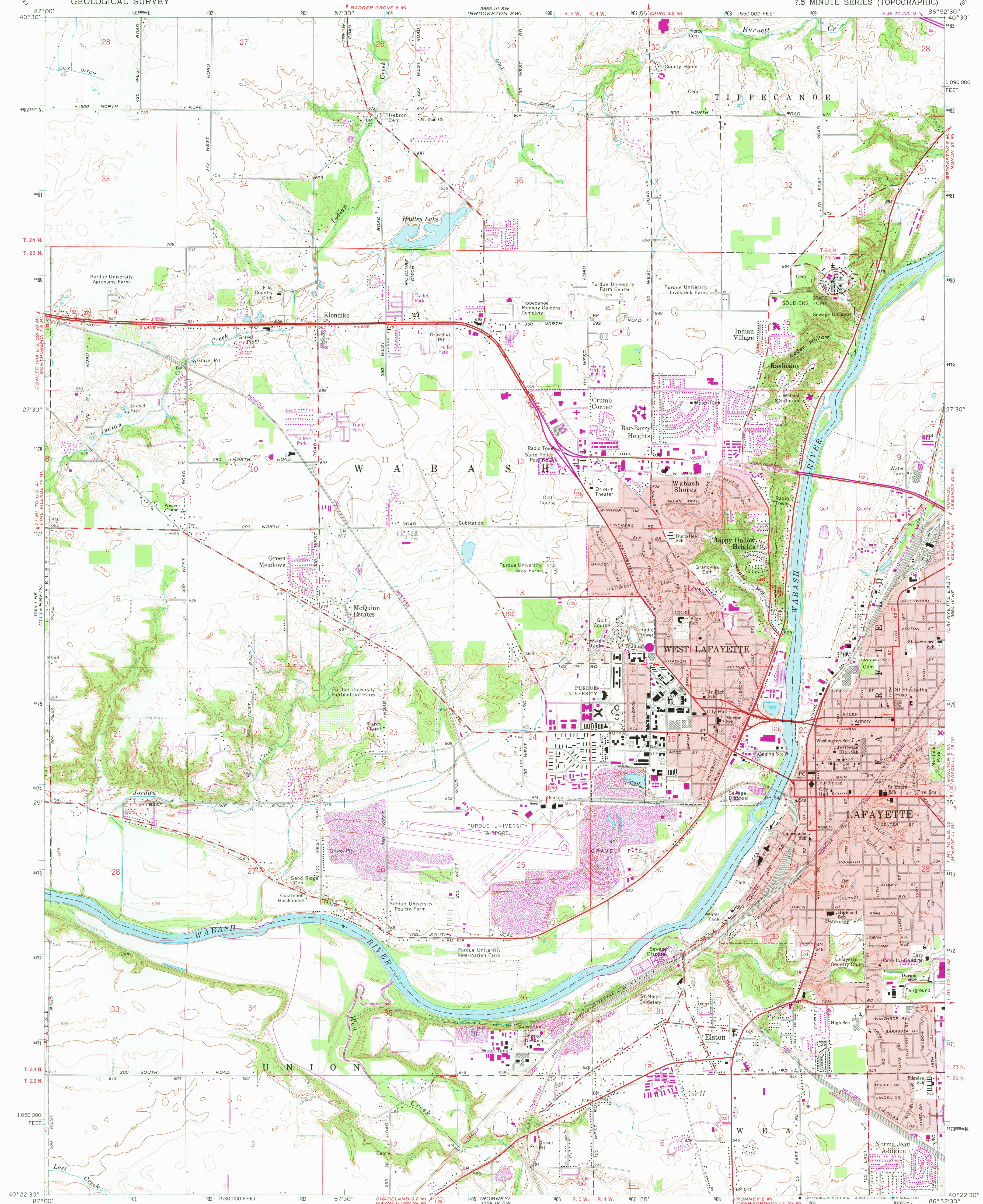


UNITED STATES  
DEPARTMENT OF THE INTERIOR  
GEOLOGICAL SURVEY

LAFAYETTE WEST QUADRANGLE  
INDIANA-TIPPECANOE CO.  
7.5 MINUTE SERIES (TOPOGRAPHIC)



Mapped, edited, and published by the Geological Survey in cooperation with State of Indiana Department of Natural Resources

Control by USGS, NOS/NOAA, and Indiana Flood Control and Water Resources Commission

Topography by planetable surveys 1940. Revised 1961

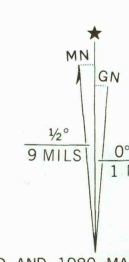
Polyconic projection. 10,000-foot grid based on Indiana coordinate system, west zone. 1000-meter Universal Transverse Mercator grid ticks, zone 16, shown in blue. 1927 North American Datum

To place on the predicted North American Datum 1983 move the projection lines 2 meters east as shown by dashed corner ticks

Red tint indicates areas in which only landmark buildings are shown

Revisions shown in purple compiled in cooperation with State of Indiana agencies from aerial photographs taken 1977 and other source data. This information not field checked. Map edited 1980

Purple tint indicates extension of urban areas



SCALE 1:24,000

CONTOUR INTERVAL 10 FEET  
NATIONAL GEODETIC VERTICAL DATUM OF 1929

UTM GRID AND 1980 MAGNETIC NORTH DECLINATION AT CENTER OF SHEET

THIS MAP COMPLIES WITH NATIONAL MAP ACCURACY STANDARDS FOR SALE BY U. S. GEOLOGICAL SURVEY, RESTON, VIRGINIA 22092

AND INDIANA DEPARTMENT OF NATURAL RESOURCES, INDIANAPOLIS, INDIANA 46204

A FOLDER DESCRIBING TOPOGRAPHIC MAPS AND SYMBOLS IS AVAILABLE ON REQUEST



ROAD CLASSIFICATION  
Primary highway, hard surface  
Secondary highway, hard surface  
Unimproved road  
Interstate Route  
U. S. Route  
State Route

LAFAYETTE WEST, IND.  
N4022.5-W8652.5/7.5

1961  
PHOTOREVISED 1980  
DMA 3664 IV NW-SERIES V851

USGS  
Historical File  
National Mapping Div.

2225  
MAY 5 1981