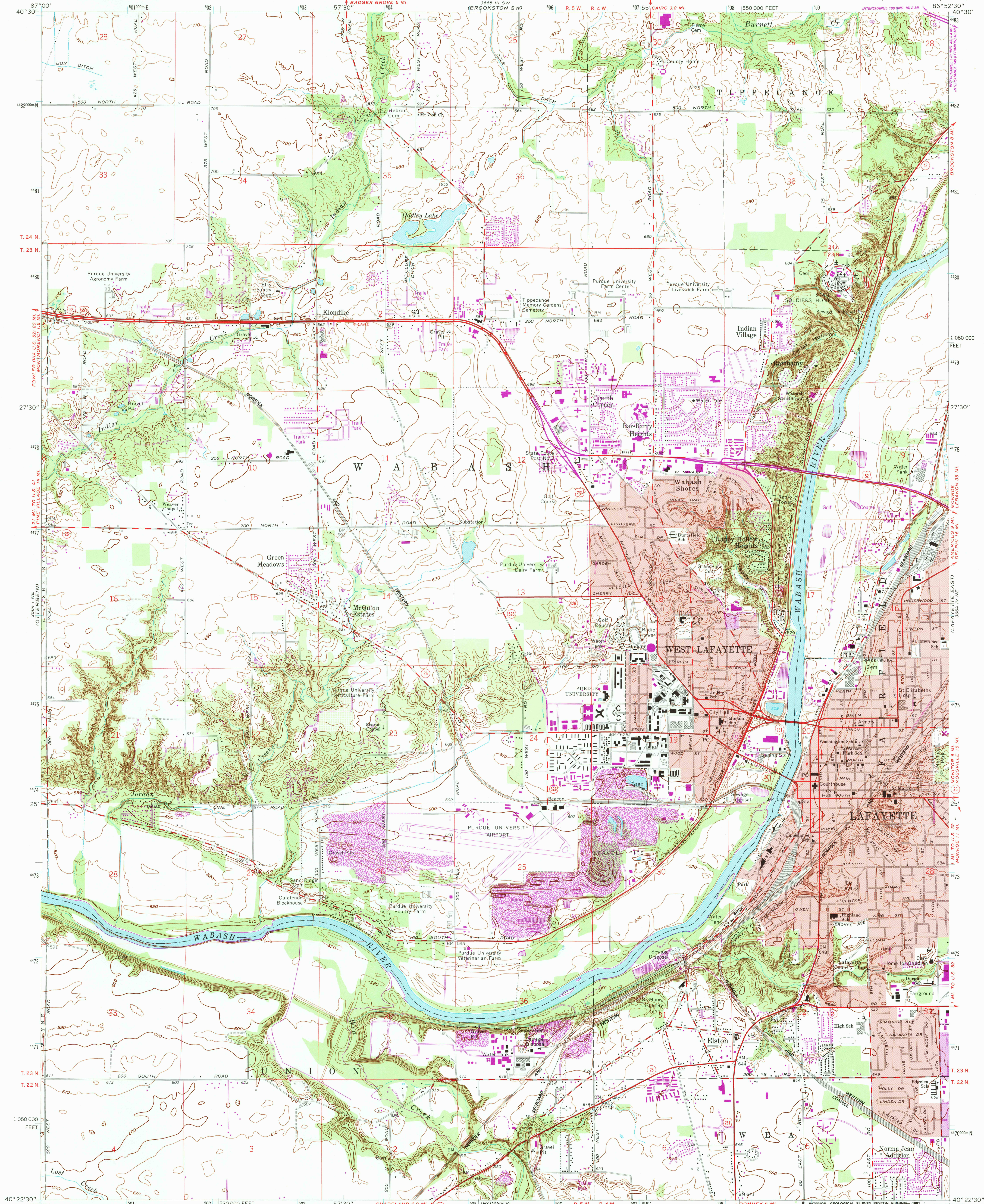
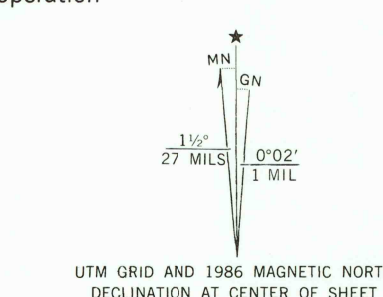


UNITED STATES  
DEPARTMENT OF THE INTERIOR  
GEOLOGICAL SURVEY

LAFAYETTE WEST QUADRANGLE  
INDIANA—TIPPECANOE CO.  
7.5 MINUTE SERIES (TOPOGRAPHIC)



Mapped, edited, and published by the Geological Survey in cooperation with State of Indiana Department of Natural Resources  
Control by USGS, NOS/NOAA, and Indiana Flood Control and Water Resources Commission  
Topography by planetable surveys 1940. Revised 1961  
Polyconic projection. 10,000-foot grid ticks based on Indiana coordinate system, west zone. 1000-meter Universal Transverse Mercator grid ticks, zone 16, shown in blue  
1927 North American Datum  
The difference between 1927 North American Datum and North American Datum of 1983 (NAD 83) for 7.5-minute intersections is given in USGS Bulletin 1875. The NAD 83 is shown by dashed corner ticks  
Red tint indicates areas in which only landmark buildings are shown



SCALE 1:24,000  
CONTOUR INTERVAL 10 FEET  
NATIONAL GEODETIC VERTICAL DATUM OF 1929

THIS MAP COMPLIES WITH NATIONAL MAP ACCURACY STANDARDS  
FOR SALE BY U.S. GEOLOGICAL SURVEY  
DENVER, COLORADO 80225, OR RESTON, VIRGINIA 22082  
AND INDIANA DEPARTMENT OF NATURAL RESOURCES, INDIANAPOLIS, INDIANA 46204  
A FOLDER DESCRIBING TOPOGRAPHIC MAPS AND SYMBOLS IS AVAILABLE ON REQUEST

Revisions shown in purple and woodland compiled in cooperation with State of Indiana agencies from aerial photographs taken in 1981 and other sources. This information not field checked. Map edited 1986  
Purple tint indicates extension of urban areas

ROAD CLASSIFICATION  
Primary highway, hard surface  
Secondary highway, hard surface  
Light-duty road, hard or improved surface  
Unimproved road  
Interstate Route  
U.S. Route  
State Route



LAFAYETTE WEST, IND.  
40086-08-TF-024  
PHOTOINSPECTED 1981  
PHOTOREVISED 1986  
DMA 3664 IV NW—SERIES Y851

