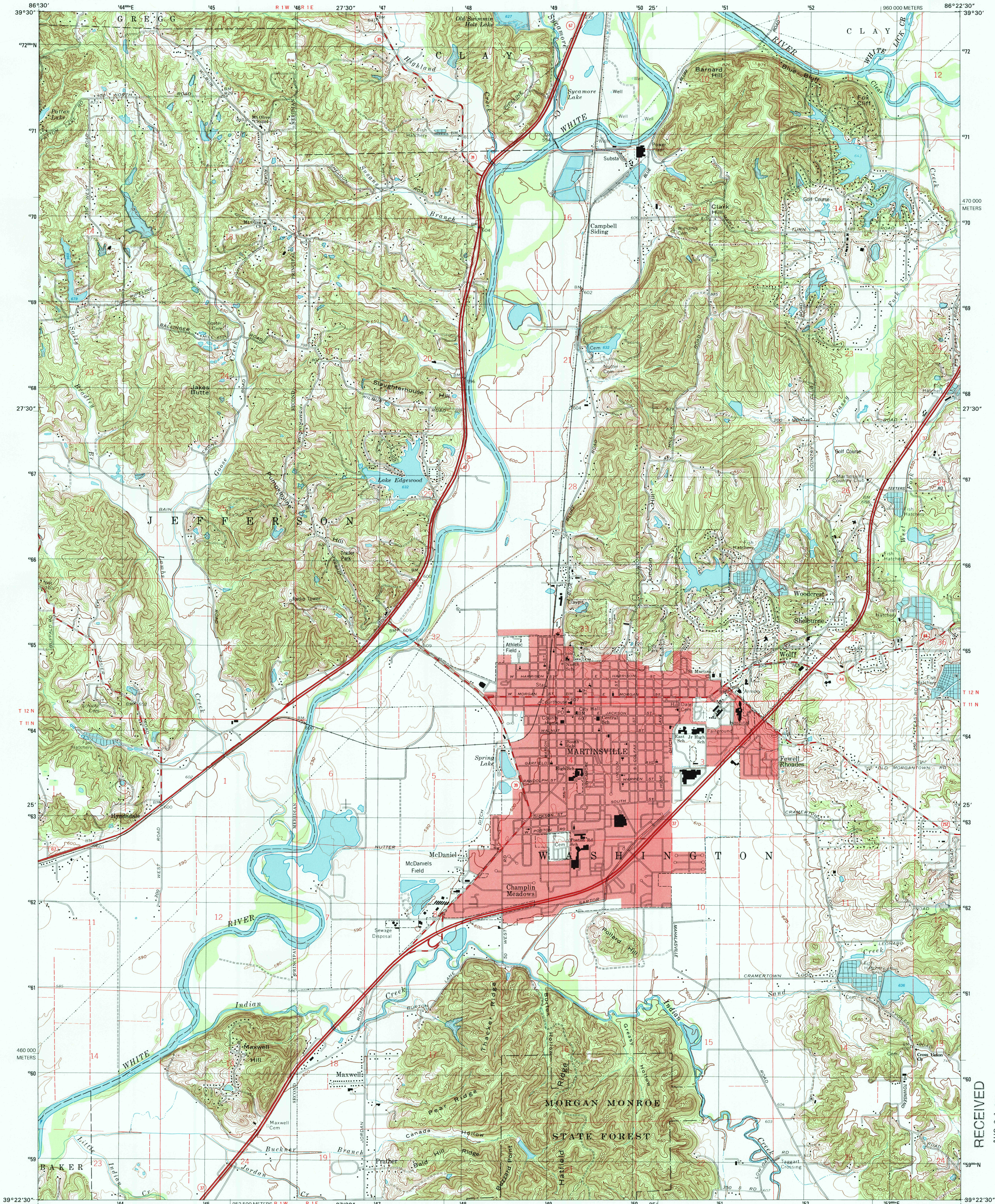


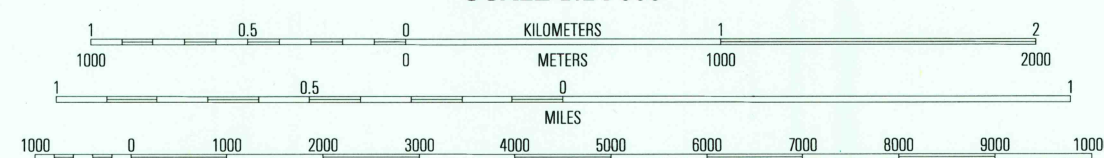
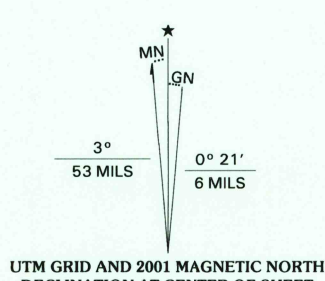


U.S. DEPARTMENT OF THE INTERIOR  
U.S. GEOLOGICAL SURVEY

MARTINSVILLE QUADRANGLE  
INDIANA-MORGAN CO.  
7.5-MINUTE SERIES (TOPOGRAPHIC)



Produced by the United States Geological Survey  
Topography compiled 1954. Planimetry derived from imagery taken 1998 and other sources. Public Land Survey System and survey control current as of 1955.  
North American Datum of 1983 (NAD 83). Projection and 1000-meter grid: Universal Transverse Mercator, zone 16. 2 500-meter ticks: Indiana Coordinate System of 1983 (west zone).  
North American Datum of 1927 (NAD 27) is shown by dashed corner ticks. The values of the shift between NAD 83 and NAD 27 for 7.5-minute intersections are obtainable from National Geodetic Survey NADCON software.  
There may be private inholdings within the boundaries of the National or State reservations shown on this map.  
Landmark buildings verified 1955.



CONTOUR INTERVAL 10 FEET  
NATIONAL GEODETIC VERTICAL DATUM OF 1929  
TO CONVERT FROM FEET TO METERS, MULTIPLY BY 0.3048

THIS MAP COMPLIES WITH NATIONAL MAP ACCURACY STANDARDS  
FOR SALE BY U.S. GEOLOGICAL SURVEY, P.O. BOX 25286, DENVER, COLORADO 80225  
AND INDIANA DEPARTMENT OF NATURAL RESOURCES, INDIANAPOLIS, INDIANA 46204  
A FOLDER DESCRIBING TOPOGRAPHIC MAPS AND SYMBOLS IS AVAILABLE ON REQUEST



ROAD CLASSIFICATION  
Primary highway .....  
Secondary highway .....  
Light-duty road, hard or improved surface .....  
Unimproved road .....  
Interstate Route .....  
U.S. Route .....  
State Route .....

1	2	3
4	5	6
7	8	

1 Hall  
2 Mooresville West  
3 Mooresville East  
4 Param  
5 Cope  
6 Modesto  
7 Hildan  
8 Morgantown

MARTINSVILLE, IN  
1998

NIMA 3762 IV NW-SERIES V851

RECEIVED  
AUG 31 2001  
USGS NWL  
HISTORICAL MAP ARCHIVES

