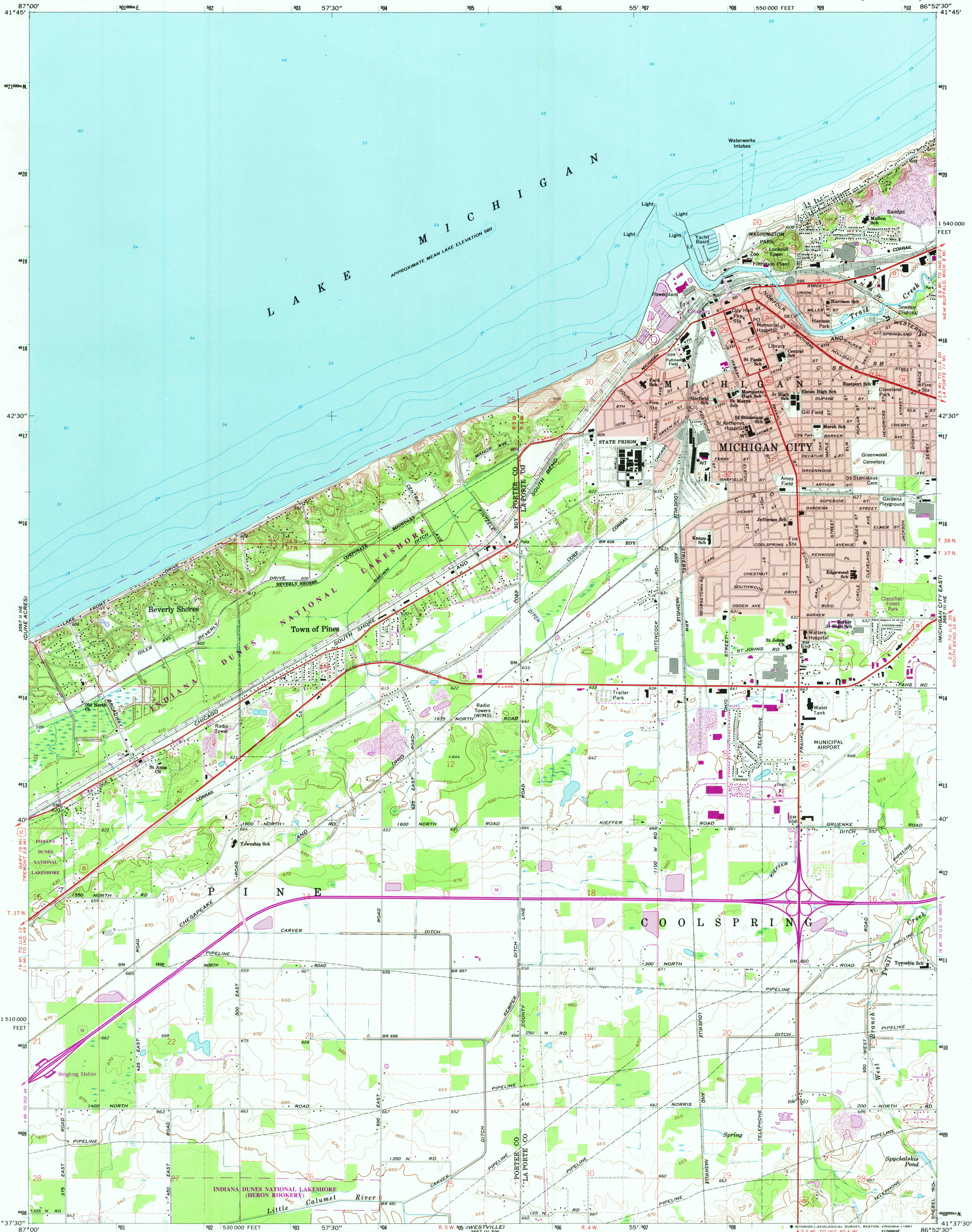
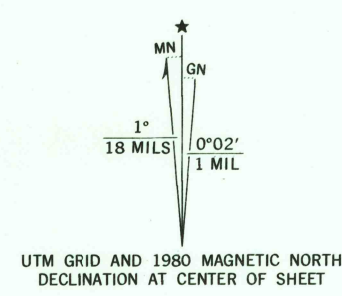


NEW BUFFALO WEST



Mapped, edited, and published by the Geological Survey
Revised in cooperation with Indiana Department
of Natural Resources
Control by USGS, NOS/NOAA, and USCE
Topography by photogrammetric methods from aerial photographs
taken 1952 and planetable surveys 1953. Revised from aerial
photographs taken 1969. Field checked 1969
Selected hydrographic data compiled from U.S. Lake Survey Chart 75 (1966)
This information is not intended for navigational purposes
Polyconic projection. 10,000-foot grid ticks based on
Indiana coordinate system, west zone
1000-meter Universal Transverse Mercator grid ticks,
zone 16, shown in blue. 1927 North American Datum
To place on the predicted North American Datum 1983
move the projection lines 1 meter north and
3 meters east as shown by dashed corner ticks
Fine red dashed lines indicate selected fence and field lines where
generally visible on aerial photographs. This information is unchecked
Red tint indicates areas in which only landmark buildings are shown
There may be private inholdings within the boundaries of
the National or State reservations shown on this map



SCALE 1:24,000
CONTOUR INTERVAL 10 FEET
DOTTED LINES REPRESENT 5-FOOT CONTOURS
NATIONAL GEODETIC VERTICAL DATUM OF 1929
DEPTH CURVES AND SOUNDINGS IN FEET-DATUM IS LOW WATER 576.8 FEET
THIS MAP COMPLIES WITH NATIONAL MAP ACCURACY STANDARDS
FOR SALE BY U. S. GEOLOGICAL SURVEY, RESTON, VIRGINIA 22092
AND INDIANA DEPARTMENT OF NATURAL RESOURCES, INDIANAPOLIS, INDIANA 46204
A FOLDER DESCRIBING TOPOGRAPHIC MAPS AND SYMBOLS IS AVAILABLE ON REQUEST



ROAD CLASSIFICATION
Primary highway, all weather, hard surface
Light-duty road, all weather, improved surface
Unimproved road, fair or dry weather
U. S. Route
State Route
Interstate Route
MICHIGAN CITY WEST, IND.
N4137.5-W8652.5/7.5

1969
PHOTOREVISED 1980
DMA 3667 III NW-SERIES V851

Revisions shown in purple compiled in cooperation with State of
Indiana agencies from aerial photographs taken 1977 and other
source data. This information not field checked. Map edited 1980

USGS
Historical File
National Mapping Div.
MAR 27 1981
2450