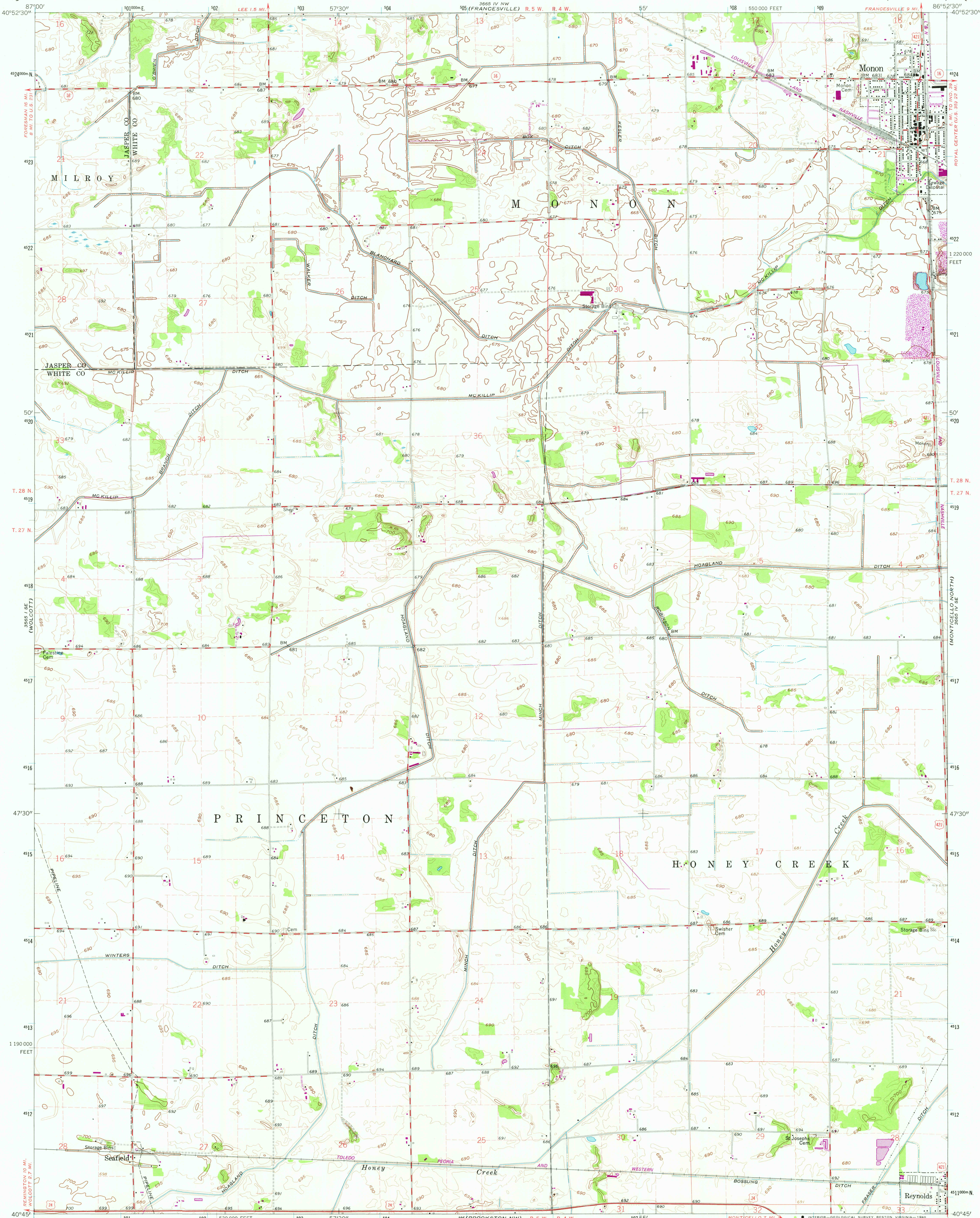


UNITED STATES
DEPARTMENT OF THE INTERIOR
GEOLOGICAL SURVEY

MONON QUADRANGLE
INDIANA
7.5 MINUTE SERIES (TOPOGRAPHIC)



Mapped, edited, and published by the Geological Survey

Control by USGS and NOS/NOAA

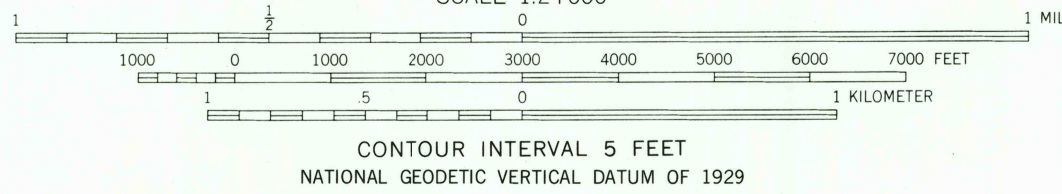
Topography by photogrammetric methods from aerial photographs taken 1958, and planimetric surveys. Field checked 1962

Polyconic projection. 10,000-foot grid based on Indiana coordinate system, west zone 16, shown in blue. 1927 North American Datum To place on the predicted North American Datum 1983 move the projection lines 2 meters east as shown by dashed corner ticks

Fine red dashed lines indicate selected fence and field lines where generally visible on aerial photographs. This information is unchecked

Revisions shown in purple compiled in cooperation with State of Indiana agencies from aerial photographs taken 1976 and other source data. This information not field checked. Map edited 1980

UTM GRID AND 1980 MAGNETIC NORTH DECLINATION AT CENTER OF SHEET



THIS MAP COMPLIES WITH NATIONAL MAP ACCURACY STANDARDS FOR SALE BY U.S. GEOLOGICAL SURVEY, RESTON, VIRGINIA 22092 AND INDIANA DEPARTMENT OF NATURAL RESOURCES, INDIANAPOLIS, INDIANA 46204 A FOLDER DESCRIBING TOPOGRAPHIC MAPS AND SYMBOLS IS AVAILABLE ON REQUEST

ROAD CLASSIFICATION
Heavy-duty ——— Light-duty ———
Medium-duty ——— Unimproved dirt ———
U.S. Route ——— State Route ———

USGS
Historical File
Topographic Division

MONON, IND.
N4045—W8652.5/7.5

1962
PHOTO-REVISED 1980
DMA 3665 IV SW—SERIES V851

OCT - 2 1980