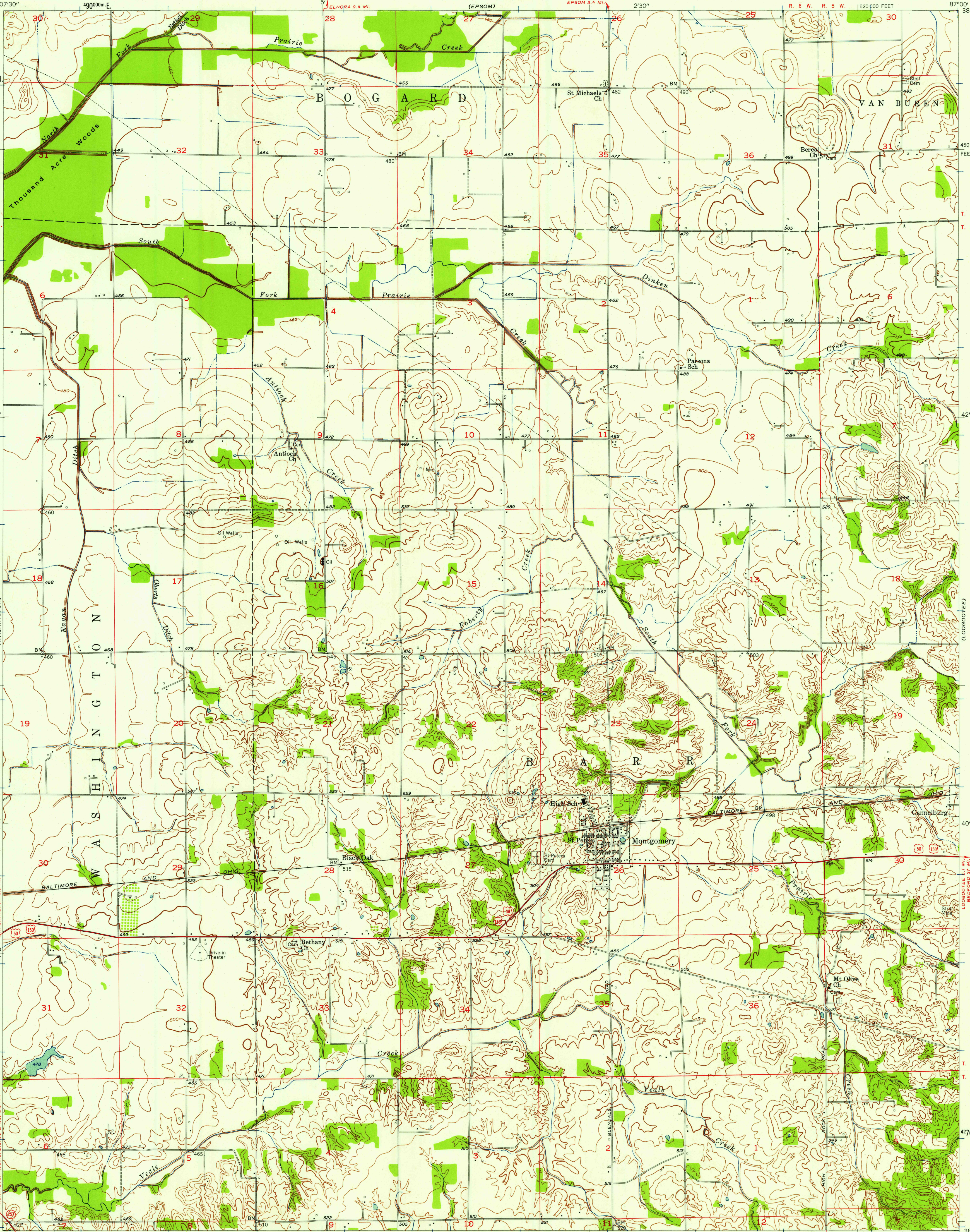


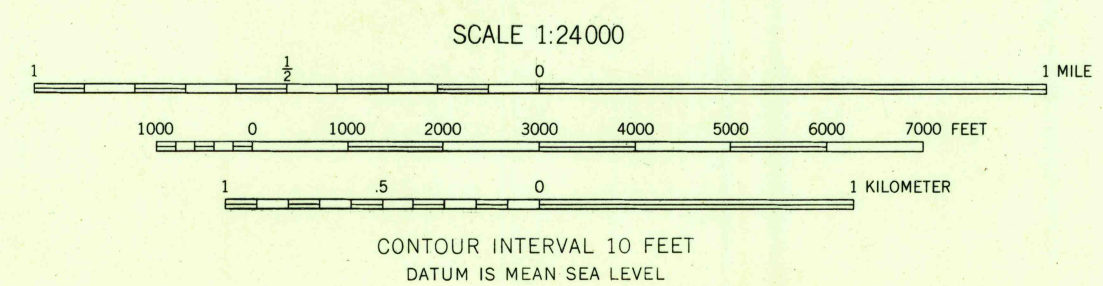
UNITED STATES  
DEPARTMENT OF THE INTERIOR  
GEOLOGICAL SURVEY

STATE OF INDIANA  
INDIANA DEPARTMENT OF CONSERVATION  
INDIANAPOLIS, INDIANA

MONTGOMERY QUADRANGLE  
INDIANA—DAVIES CO.  
7.5 MINUTE SERIES (TOPOGRAPHIC)



Maped, edited, and published by the Geological Survey  
Control by USGS and USC&GS  
Topography by planetable surveys 1942  
Culture revised 1957  
Polyconic projection. 1927 North American datum  
10,000-foot grid based on Indiana coordinate system,  
west zone  
1000-meter Universal Transverse Mercator grid ticks,  
zone 16, shown in blue



ROAD CLASSIFICATION  
Heavy-duty ——— Light-duty ———  
Unimproved dirt ———  
U. S. Route ——— State Route ———

USGS  
Historical File  
Topographic Division

QUADRANGLE LOCATION

MONTGOMERY, IND.  
N 38°37.5'—W 87°00'7.5"

1957

FOR SALE BY U. S. GEOLOGICAL SURVEY, WASHINGTON 25, D. C.  
AND INDIANA DEPARTMENT OF CONSERVATION, INDIANAPOLIS, INDIANA  
A FOLDER DESCRIBING TOPOGRAPHIC MAPS AND SYMBOLS IS AVAILABLE ON REQUEST

MAY 13 1958  
MAY 13 1958

2400