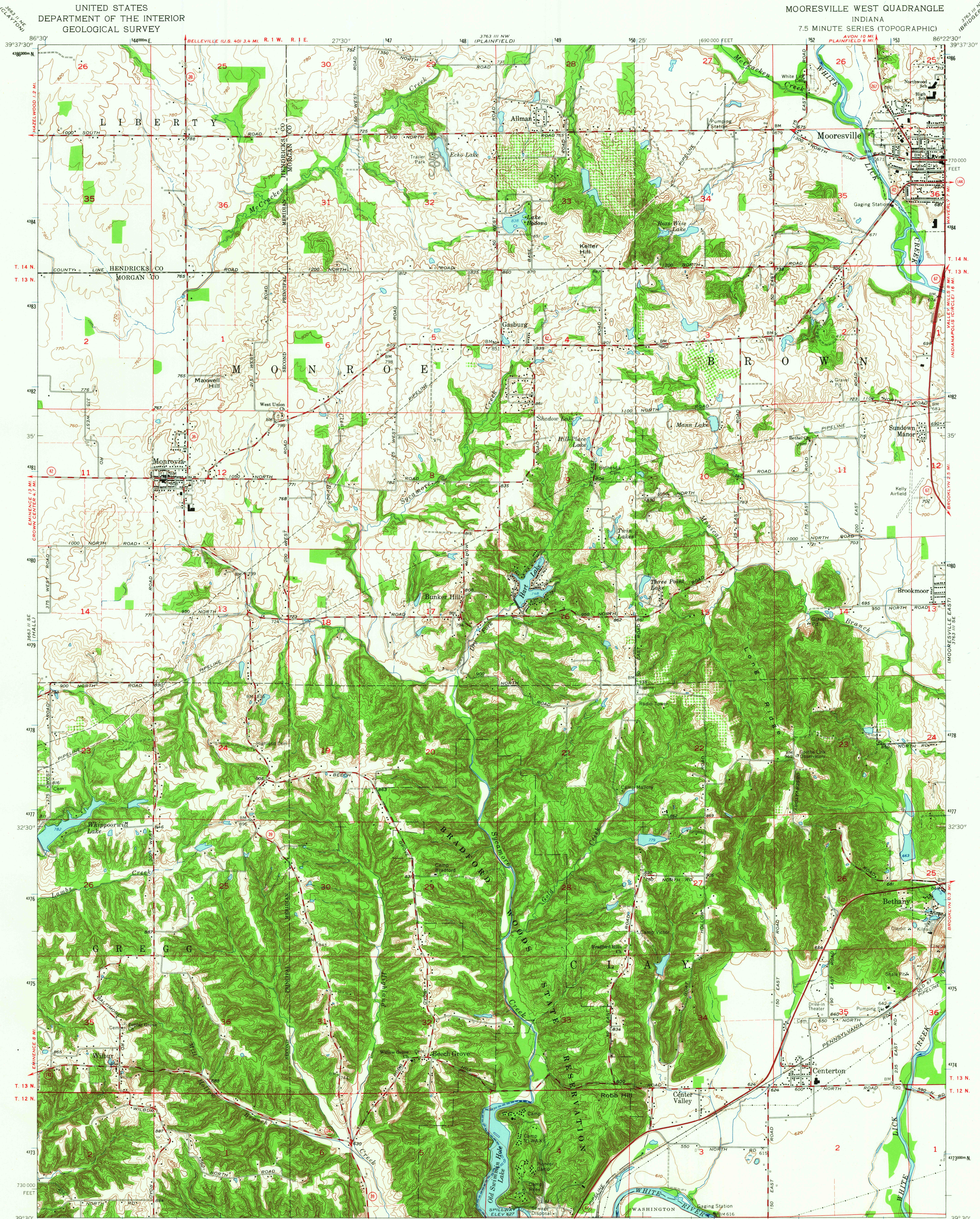
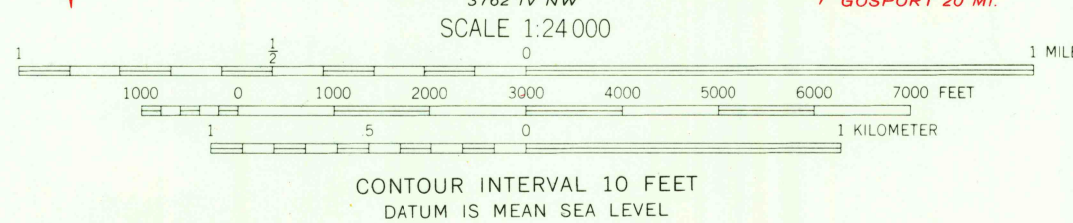


UNITED STATES
DEPARTMENT OF THE INTERIOR
GEOLOGICAL SURVEY

MOORESVILLE WEST QUADRANGLE
INDIANA
7.5 MINUTE SERIES (TOPOGRAPHIC)



Mapped, edited, and published by the Geological Survey
Revised in cooperation with Indiana Department of
Natural Resources
Control by USGS, USC&GS, and Indiana Flood Control and Water
Resources Commission
Topography by photogrammetric methods from aerial photographs
taken 1953. Field checked 1955. Revised 1965
Polyconic projection. 1927 North American datum
10,000-foot grid based on Indiana coordinate system, west zone
1,000-meter Universal Transverse Mercator grid ticks, zone 16,
shown in blue
Fine red dashed lines indicate selected fence and field lines where
generally visible on aerial photographs. This information is unchecked



THIS MAP COMPLIES WITH NATIONAL MAP ACCURACY STANDARDS
FOR SALE BY U.S. GEOLOGICAL SURVEY, WASHINGTON, D.C. 20242
AND INDIANA DEPARTMENT OF NATURAL RESOURCES, INDIANAPOLIS, INDIANA
A FOLDER DESCRIBING TOPOGRAPHIC MAPS AND SYMBOLS IS AVAILABLE ON REQUEST

USGS
Historical File
Topographic Division



U.S.G.S.
TOPOGRAPHIC DIVISION

ROAD CLASSIFICATION
Heavy-duty ————
Medium-duty ————
Light-duty ————
Unimproved dirt ————
State Route ————

MOORESVILLE WEST, IND.
N3930—W8622.5/7.5

1965
AMS 3763 III SW—SERIES V851

2375
NOV 21 1966