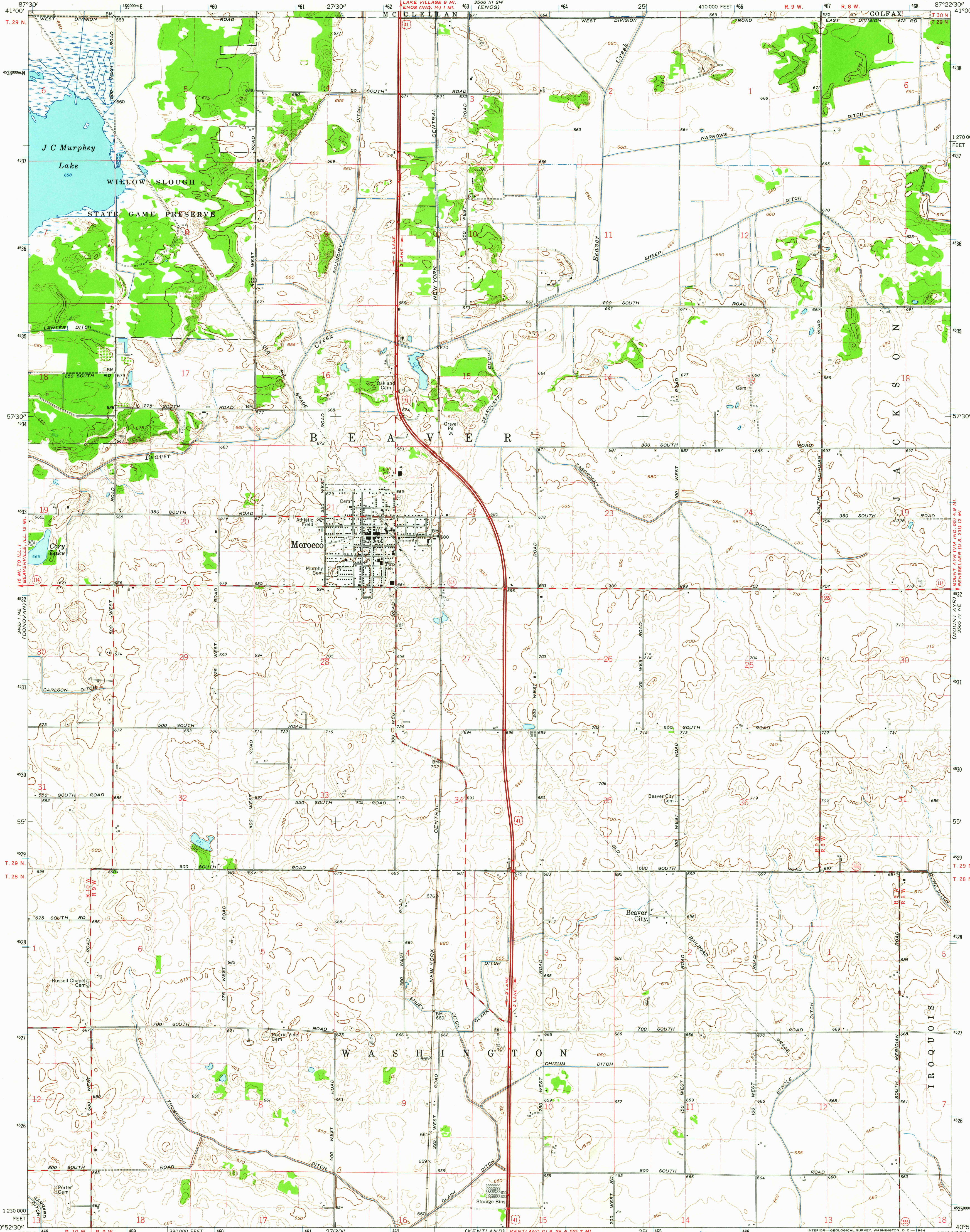


UNITED STATES
DEPARTMENT OF THE INTERIOR
GEOLOGICAL SURVEY

MOROCCO QUADRANGLE
INDIANA—NEWTON CO.
7.5 MINUTE SERIES (TOPOGRAPHIC)



Mapped, edited, and published by the Geological Survey
Control by USGS and USC&GS
Planimetry by photogrammetric methods from aerial photographs
taken 1959. Topography by planetable surveys 1961
Polyconic projection. 1927 North American datum
10,000-foot grid based on Indiana coordinate system, west zone
1000-meter Universal Transverse Mercator grid ticks,
zone 16, shown in blue
Fine red dashed lines indicate selected fence and field lines where
generally visible on aerial photographs. This information is unchecked

UTM GRID AND 1961 MAGNETIC NORTH
DECLINATION AT CENTER OF SHEET

SCALE 1:24,000
CONTOUR INTERVAL 5 FEET
DATUM IS MEAN SEA LEVEL

USGS
Historical File
Topographic Division



ROAD CLASSIFICATION
Heavy-duty ——— Light-duty ———
Medium-duty ——— Unimproved dirt ———
U.S. Route ——— State Route ———

MOROCCO, IND
N4052.5—W8722.5/7.5

1961

AMS 3565 IV NW—SERIES V851

JAN 22 1964

2580