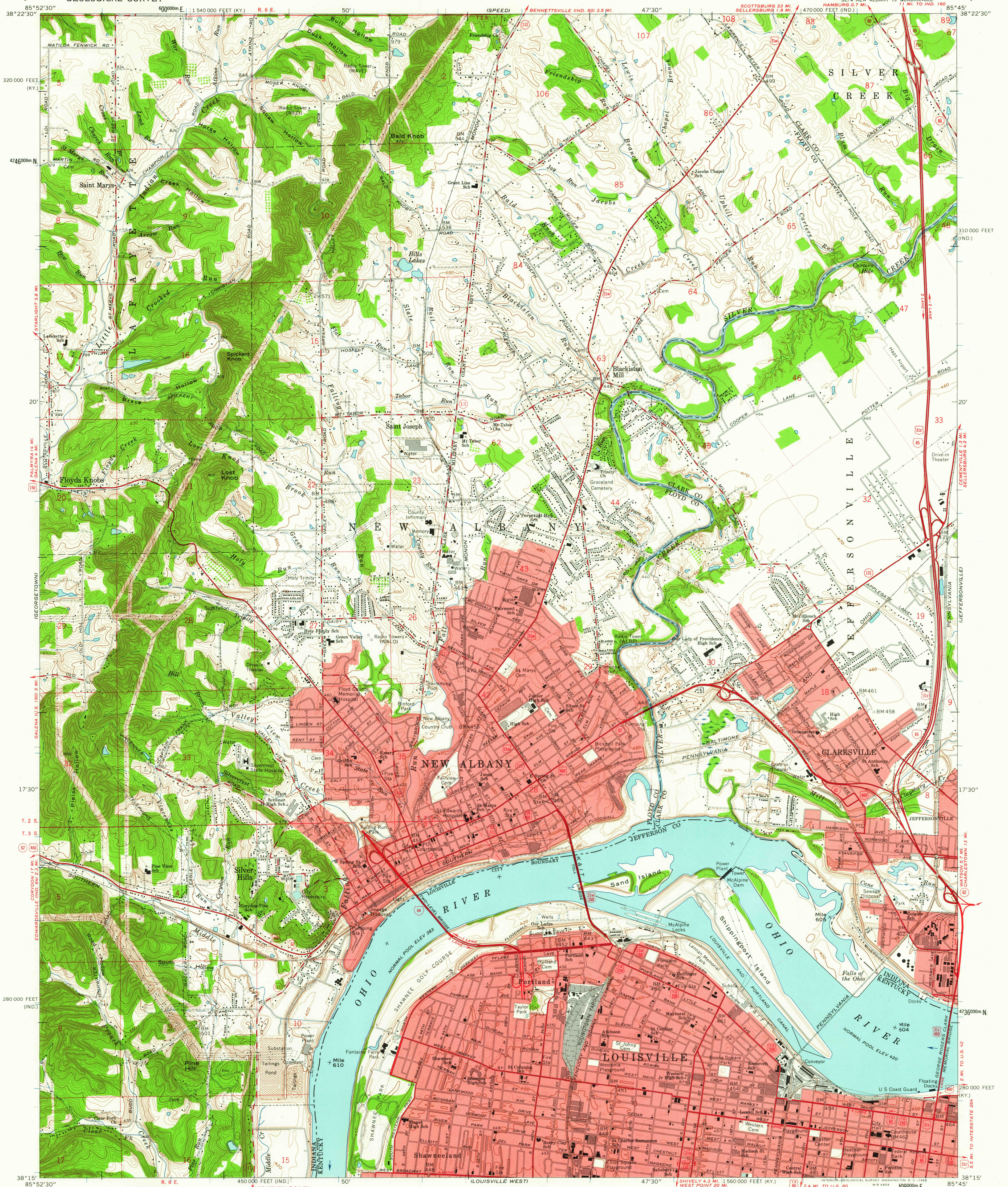


UNITED STATES
DEPARTMENT OF THE INTERIOR
GEOLOGICAL SURVEY

NEW ALBANY QUADRANGLE
INDIANA-KENTUCKY
7.5 MINUTE SERIES (TOPOGRAPHIC)

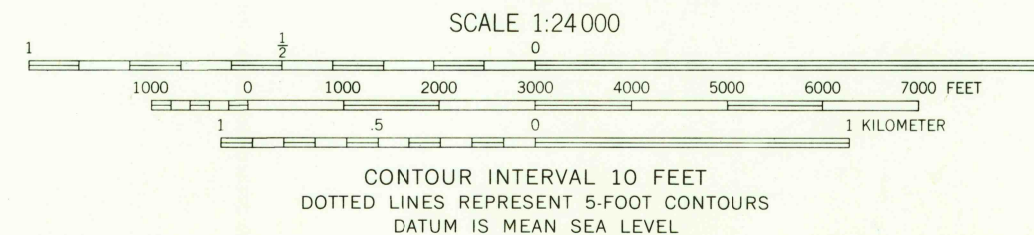


Maped, edited, and published by the Geological Survey in cooperation with State of Indiana, Department of Conservation and Kentucky Geological Survey. Control by USGS, US&GS, USCE, and City of Louisville. Topography in Indiana by planetable surveys 1937-1938. Planimetry in Kentucky by photogrammetric methods from aerial photographs taken 1949. Topography by planetable surveys 1950. Entire map revised 1960.

Polyconic projection. 1927 North American datum. 10,000-foot grids based on Indiana coordinate system, east zone and Kentucky coordinate system, north zone. 1000-meter Universal Transverse Mercator grid ticks, zone 16, shown in blue.

The state boundary as shown represents the approximate position of the low water lines as determined from U. S. Corps of Engineers Ohio River charts, surveyed 1911-1912, and supplementary information. Red tint indicates areas in which only landmark buildings are shown. Dotted land lines established by private survey.

TRUE NORTH
MAGNETIC NORTH
APPROXIMATE MEAN
DECLINATION, 1960



THIS MAP COMPLIES WITH NATIONAL MAP ACCURACY STANDARDS
FOR SALE BY U. S. GEOLOGICAL SURVEY, WASHINGTON 25, D. C.,
INDIANA DEPARTMENT OF CONSERVATION, INDIANAPOLIS, INDIANA,
KENTUCKY GEOLOGICAL SURVEY, LEXINGTON, KENTUCKY,
AND KENTUCKY DEPARTMENT OF COMMERCE, FRANKFORT, KENTUCKY.
A FOLDER DESCRIBING TOPOGRAPHIC MAPS AND SYMBOLS IS AVAILABLE ON REQUEST.

USGS
Historical File
Topographic Division

ROAD CLASSIFICATION
Heavy-duty ——— Light-duty ———
Medium-duty ——— Unimproved dirt ———
Interstate Route U. S. Route State Route

USGS NEW ALBANY, IND.-KY.
SE 4 NEW ALBANY 15' QUADRANGLE
N3815-W8545/7.5
1960
MAR 19 1963