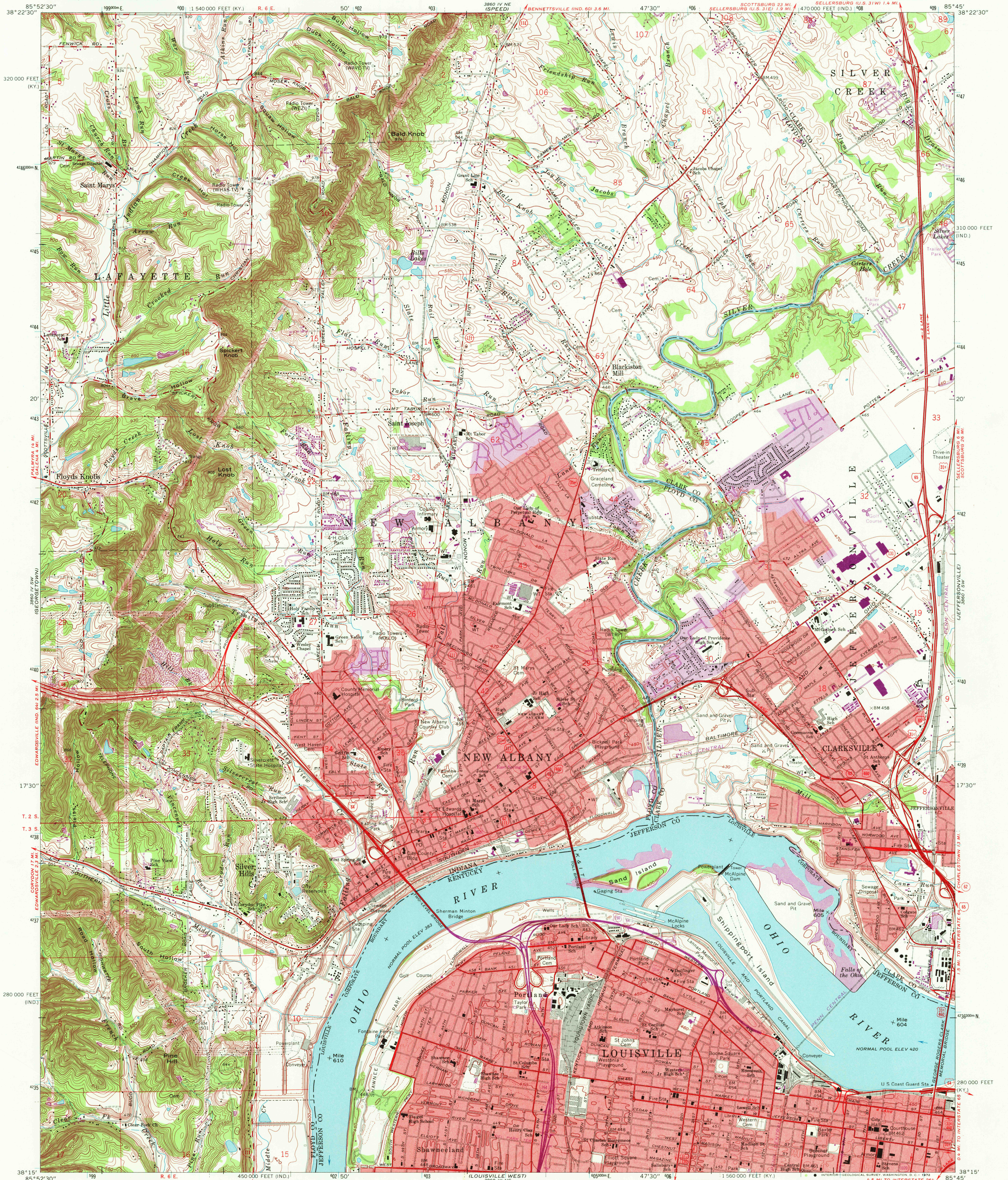
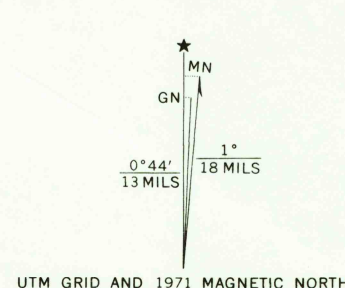


UNITED STATES  
DEPARTMENT OF THE INTERIOR  
GEOLOGICAL SURVEY

NEW ALBANY QUADRANGLE  
INDIANA—KENTUCKY  
7.5 MINUTE SERIES (TOPOGRAPHIC)



Mapped, edited, and published by the Geological Survey in cooperation with Indiana Department of Natural Resources and Kentucky Geological Survey. Revised in cooperation with Kentucky Geological Survey.  
Control by USGS, USC&GS, USCE, and City of Louisville  
Topography in Indiana by planetable surveys 1937-1938. Planimetry in Kentucky by photogrammetric methods from aerial photographs taken 1949. Topography by planetable surveys 1950. Entire map revised 1965  
Polyconic projection. 1927 North American datum. 10,000-foot grids based on Indiana coordinate system, east zone, and Kentucky coordinate system, north zone. 1000-meter Universal Transverse Mercator grid ticks, zone 16, shown in blue  
The state boundary as shown represents the approximate position of the low water line as determined from U. S. Corps of Engineers Ohio River charts, surveyed 1911-1912, and supplementary information  
Red tint indicates areas in which only landmark buildings are shown  
Dotted land lines established by private survey



SCALE 1:24,000  
CONTOUR INTERVAL 10 FEET  
DOTTED LINES REPRESENT 5-FOOT CONTOURS  
DATUM IS MEAN SEA LEVEL  
THIS MAP COMPLIES WITH NATIONAL MAP ACCURACY STANDARDS  
FOR SALE BY U. S. GEOLOGICAL SURVEY, WASHINGTON, D. C. 20242  
INDIANA DEPARTMENT OF NATURAL RESOURCES, INDIANAPOLIS, INDIANA 46204  
KENTUCKY GEOLOGICAL SURVEY, LEXINGTON, KENTUCKY 40506,  
AND KENTUCKY DEPARTMENT OF COMMERCE, FRANKFORT, KENTUCKY 40601  
A FOLDER DESCRIBING TOPOGRAPHIC MAPS AND SYMBOLS IS AVAILABLE ON REQUEST

ROAD CLASSIFICATION  
Heavy-duty ——— Light-duty ———  
Medium-duty ——— Unimproved dirt ———  
Interstate Route — U. S. Route — State Route —  
NEW ALBANY, IND.—KY.  
SE/4 NEW ALBANY 15' QUADRANGLE  
N3815—W8545/7.5  
1965  
PHOTOREVISED 1971  
AMS 3860 IV SE—SERIES V851

USGS  
HISTORICAL FILE  
TOPOGRAPHIC DIVISION  
10360  
MAR 23 1972