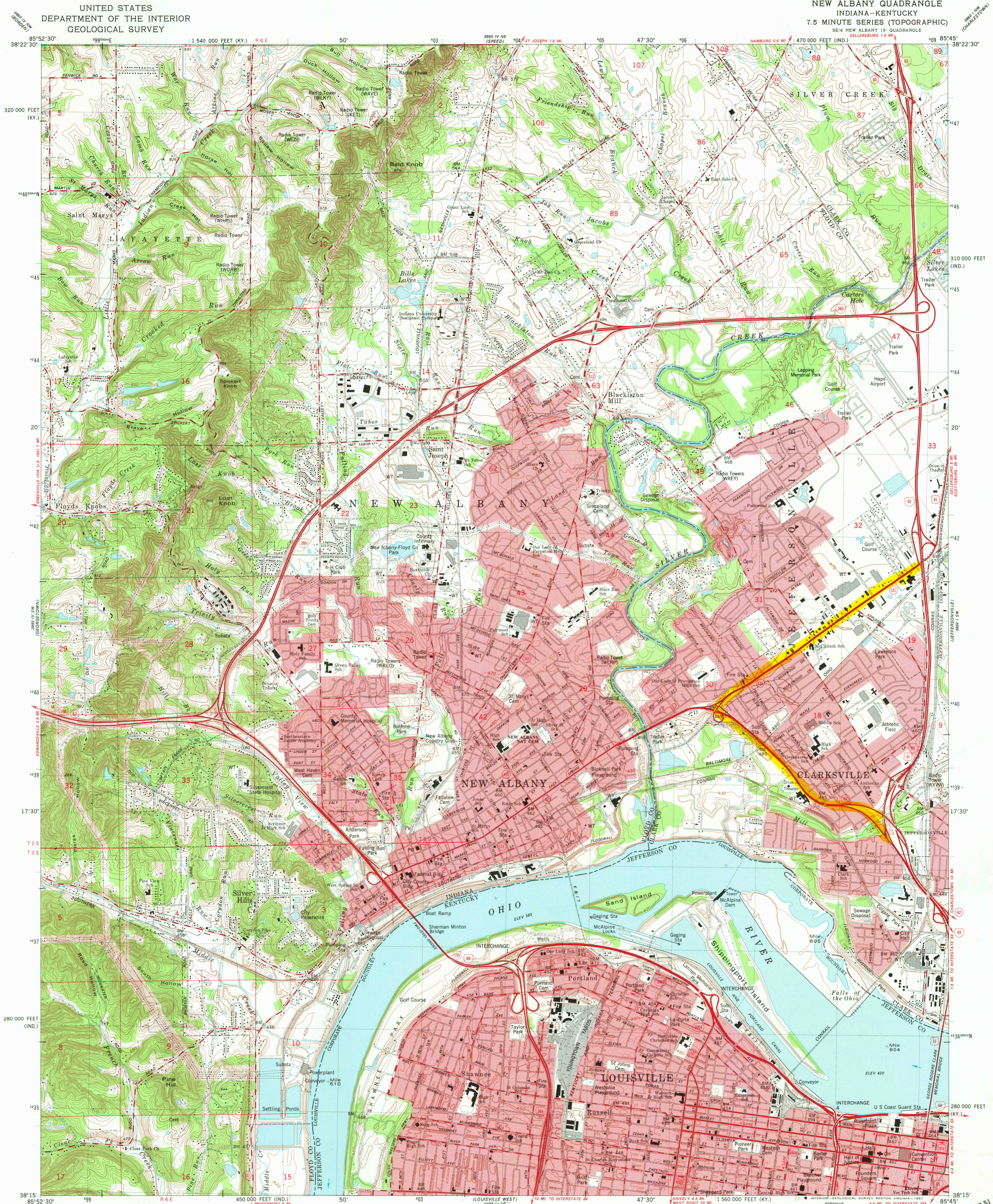
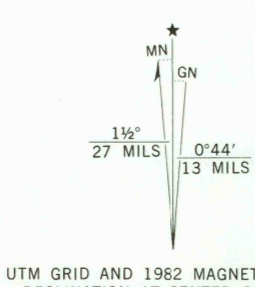


UNITED STATES  
DEPARTMENT OF THE INTERIOR  
GEOLOGICAL SURVEY

NEW ALBANY QUADRANGLE  
INDIANA-KENTUCKY  
7.5 MINUTE SERIES (TOPOGRAPHIC)  
SE/4 NEW ALBANY 15' QUADRANGLE  
SELLERSBURG 1.4 MI.



Mapped, edited, and published by the Geological Survey in cooperation with Indiana Department of Natural Resources and Kentucky Geological Survey.  
Control by USGS, NOS/NOAA, USACE, Indiana Flood Control and Water Resources Commission, and the City of Louisville.  
Topography in Indiana by photogrammetric surveys 1937-1938. Planimetry in Kentucky by photogrammetric methods from aerial photographs taken 1949. Topography by planimetric surveys 1950. Revised from aerial photographs taken 1978. Field checked 1979. Map edited 1982.  
Polyconic projection, 10,000-foot grid ticks based on Indiana coordinate system, east zone, and Kentucky coordinate system, north zone. 1000-meter Universal Transverse Mercator grid, zone 16 1927 North American Datum.  
To place on the predicted North American Datum 1983 move the projection lines 3 meters south and 2 meters west as shown by dashed corner ticks.  
Red tint indicates areas in which only landmark buildings are shown.  
Dotted land lines established by private survey.  
The state boundary as shown represents the approximate position of the low water line as determined from U.S. Corps of Engineers Ohio River charts, surveyed 1911-1912, and supplementary information.  
There may be private inholdings within the boundaries of the National or State reservations shown on this map.



CONTOUR INTERVAL 10 FEET  
DOTTED LINES REPRESENT 5-FOOT CONTOURS  
NATIONAL GEODETIC VERTICAL DATUM OF 1929

THIS MAP COMPLIES WITH NATIONAL MAP ACCURACY STANDARDS  
FOR SALE BY U.S. GEOLOGICAL SURVEY, RESTON, VIRGINIA 22092,  
INDIANA DEPARTMENT OF NATURAL RESOURCES, INDIANAPOLIS, INDIANA 46204,  
KENTUCKY GEOLOGICAL SURVEY, LEXINGTON, KENTUCKY 40506,  
AND KENTUCKY DEPARTMENT OF COMMERCE, FRANKFORT, KENTUCKY 40601  
A FOLDER DESCRIBING TOPOGRAPHIC MAPS AND SYMBOLS IS AVAILABLE ON REQUEST



ROAD CLASSIFICATION  
Primary highway, hard surface  
Secondary highway, hard surface  
Light-duty road, hard or improved surface  
Unimproved road  
Interstate Route  
U.S. Route  
State Route

NEW ALBANY, IND.-KY.  
SE/4 NEW ALBANY 15' QUADRANGLE  
N3815-W8545/7.5

1982  
DMA 3860 IV SE-SERIES V851

RETURN TO:  
MMD HISTORICAL MAP ARCHIVES  
USGS NATIONAL CENTER, MS-522  
RESTON, VA 20192

JAN 23 1982  
LOUISVILLE, KY  
38° 15' N  
85° 45' W