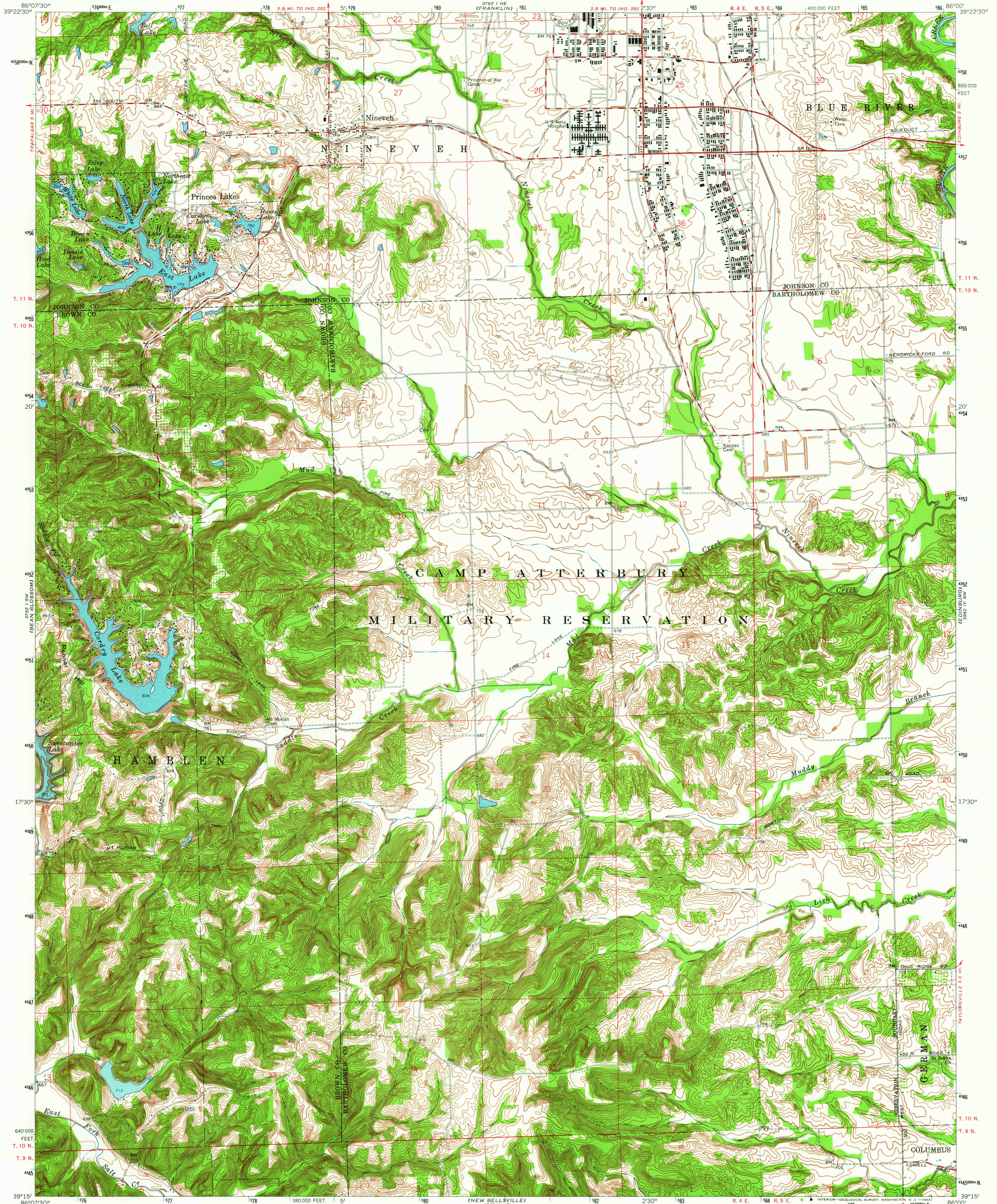


3752 I NW
(TREFALGAR)

UNITED STATES
DEPARTMENT OF THE INTERIOR
GEOLOGICAL SURVEY

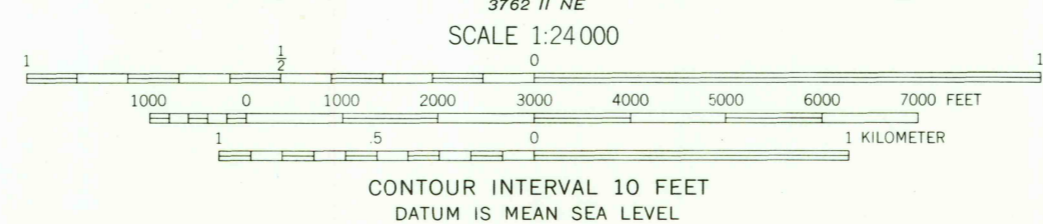
NINEVEH QUADRANGLE
INDIANA
7.5 MINUTE SERIES (TOPOGRAPHIC)
SE 1/4 FRANKLIN 15' QUADRANGLE

3752 I NW
(HARRIS T. 11)



Mapped, edited, and published by the Geological Survey
Revised in cooperation with State of Indiana
Department of Conservation
Control by USGS and USC&GS
Planimetry by photogrammetric methods from aerial
photographs taken 1944. Topography by planimetric surveys 1947.
Revised 1962
Polyconic projection. 1927 North American datum
10,000-foot grid based on Indiana coordinate system, east zone
1000-meter Universal Transverse Mercator grid ticks,
zone 16, shown in blue

UTM GRID AND 1962 MAGNETIC NORTH
DECLINATION AT CENTER OF SHEET



THIS MAP COMPLIES WITH NATIONAL MAP ACCURACY STANDARDS
FOR SALE BY U.S. GEOLOGICAL SURVEY, WASHINGTON 25, D. C.
AND INDIANA DEPARTMENT OF CONSERVATION, INDIANAPOLIS, INDIANA
A FOLDER DESCRIBING TOPOGRAPHIC MAPS AND SYMBOLS IS AVAILABLE ON REQUEST

USGS
Historical File
Topographic Division



ROAD CLASSIFICATION
Heavy-duty ——— Light-duty ———
Medium-duty ——— Unimproved dirt ———

USGS
COPY
TOPOGRAPHIC DIVISION

NINEVEH, IND.
SE 1/4 FRANKLIN 15' QUADRANGLE
N3915—W8600/7.5
1962
AMS 3762 I SE—SERIES W851

2155

JUN 22 1964