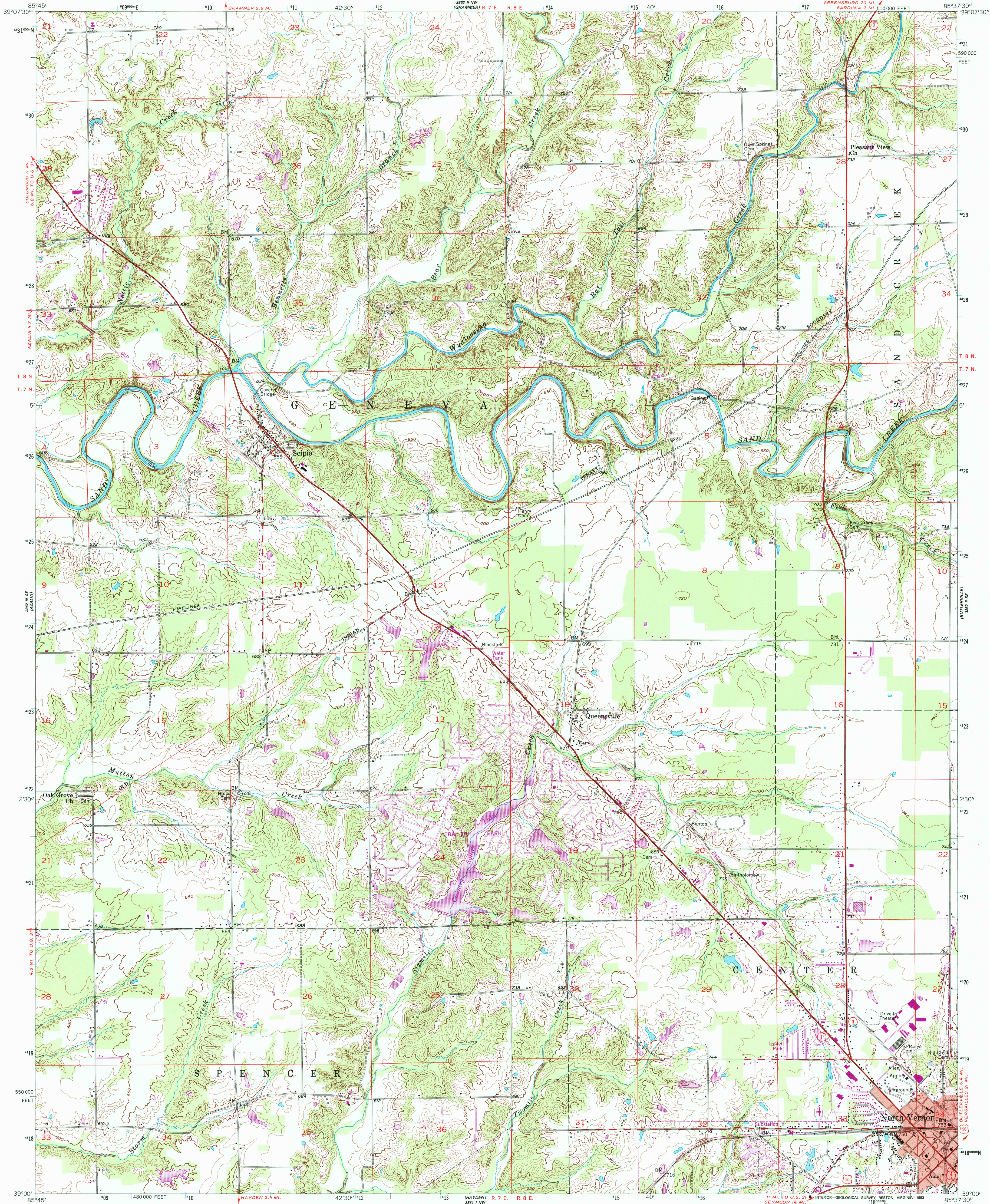


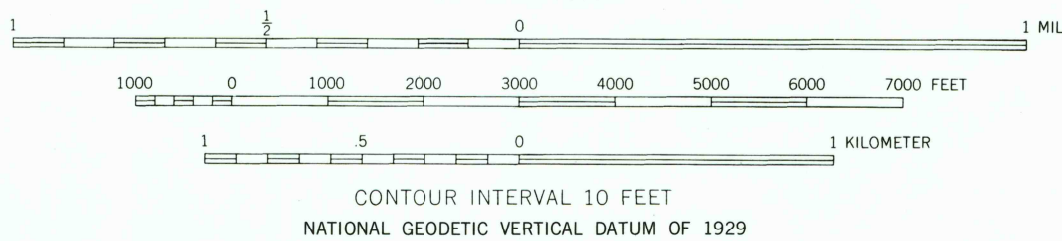
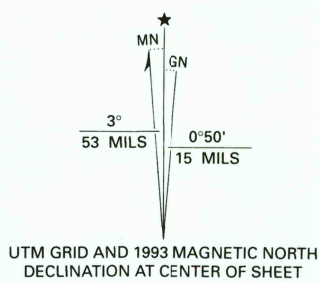
UNITED STATES  
DEPARTMENT OF THE INTERIOR  
GEOLOGICAL SURVEY

STATE OF INDIANA  
DEPARTMENT OF NATURAL RESOURCES  
INDIANAPOLIS, INDIANA

NORTH VERNON QUADRANGLE  
INDIANA—JENNINGS CO.  
7.5 MINUTE SERIES (TOPOGRAPHIC)



Produced by the U. S. Geological Survey  
Control by USGS and NOS/NOAA  
Topography by kelsh plotter from aerial photographs  
taken 1956. Field checked 1957  
Projection and 10,000-foot grid ticks: Indiana coordinate  
system, east zone (transverse Mercator)  
1000-meter Universal Transverse Mercator grid ticks, zone 16, shown in blue  
1927 North American Datum (NAD 27)  
North American Datum of 1983 (NAD 83) is shown by dashed corner ticks  
The values of the shift between NAD 27 and NAD 83 for 7.5-minute  
intersections are given in USGS Bulletin 1875  
Red tint indicates areas in which only landmark buildings are shown  
Photinspected from 1992 source; no major culture or drainage  
changes observed. Boundaries revised and names verified 1993



ROAD CLASSIFICATION  
Primary highway, hard surface  
Secondary highway, hard surface  
Unimproved road  
Interstate Route  
U. S. Route  
State Route

THIS MAP COMPLIES WITH NATIONAL MAP ACCURACY STANDARDS  
FOR SALE BY U. S. GEOLOGICAL SURVEY, DENVER, COLORADO 80225 OR RESTON, VIRGINIA 22092,  
AND INDIANA DEPARTMENT OF NATURAL RESOURCES, INDIANAPOLIS, INDIANA 46204  
A FOLDER DESCRIBING TOPOGRAPHIC MAPS AND SYMBOLS IS AVAILABLE ON REQUEST

Revisions shown in purple and woodland compiled in cooperation  
with State of Indiana agencies from aerial photographs  
taken 1984 and other sources. This information not field checked  
Map edited 1988

NORTH VERNON, IND.  
39085-A6-TF-024  
1957  
PHOTOREVISED 1988  
MINOR REVISION 1993  
DMA 3862 II SW - SERIES V851

