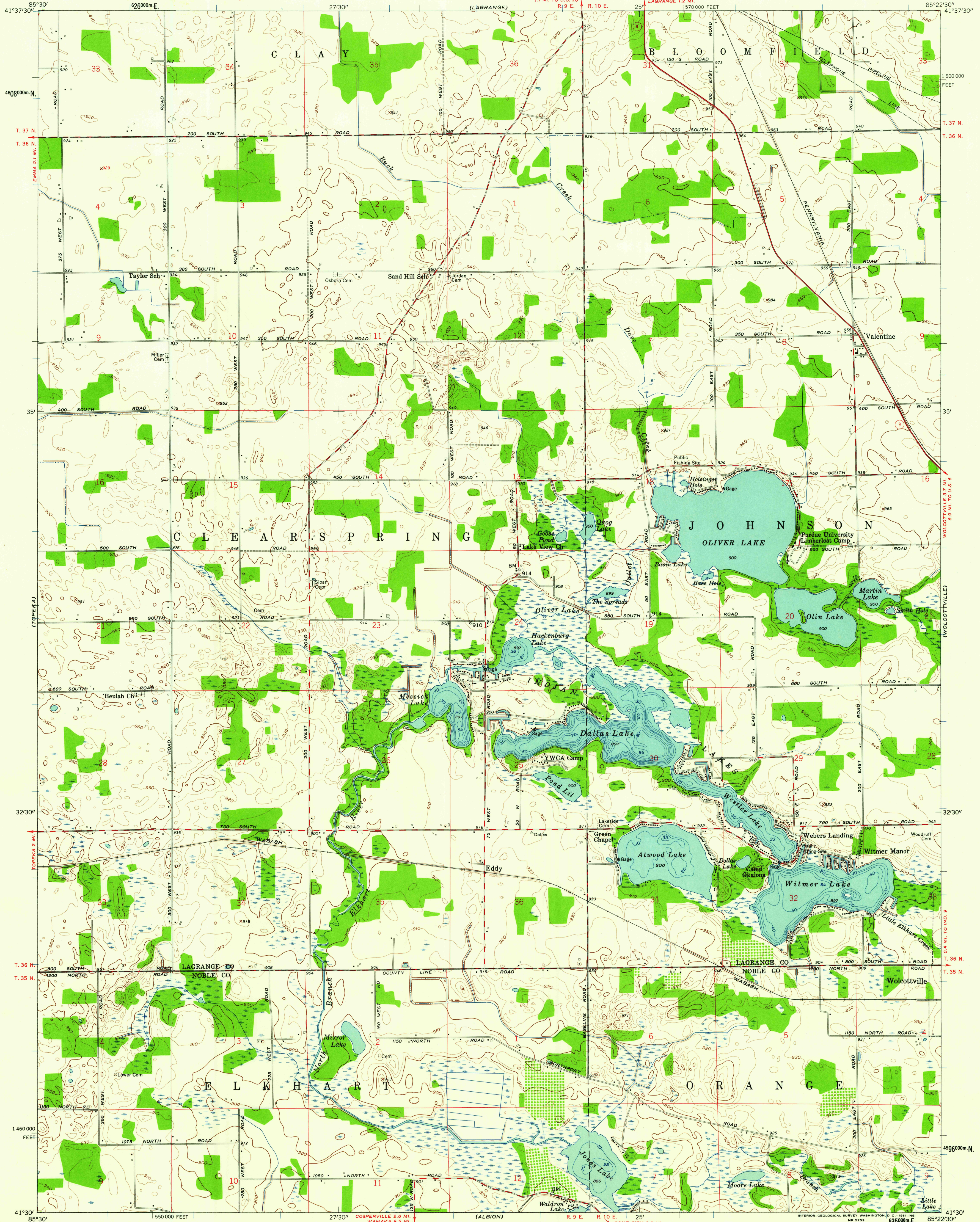
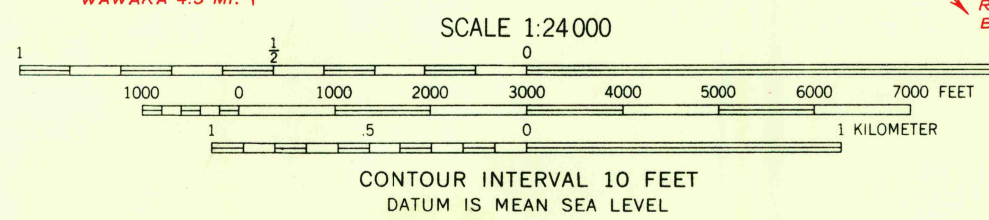


UNITED STATES  
DEPARTMENT OF THE INTERIOR  
GEOLOGICAL SURVEY

OLIVER LAKE QUADRANGLE  
INDIANA  
7.5 MINUTE SERIES (TOPOGRAPHIC)



Mapped, edited, and published by the Geological Survey  
Control by USGS and USC&GS  
Topography by planetable surveys 1945-1946. Revised 1959  
Polyconic projection. 1927 North American datum  
10,000-foot grid based on Indiana coordinate system, east zone  
1000-meter Universal Transverse Mercator grid ticks,  
zone 16, shown in blue  
Depth curves compiled from USGS-Indiana  
Department of Conservation lake charts



USGS  
Historical  
Topographic Division

ROAD CLASSIFICATION  
Heavy-duty ——— Light-duty ———  
Medium-duty ——— Unimproved dirt ———  
○ State Route

THIS MAP COMPLIES WITH NATIONAL MAP ACCURACY STANDARDS  
FOR SALE BY U.S. GEOLOGICAL SURVEY, WASHINGTON 25, D. C.  
AND INDIANA DEPARTMENT OF CONSERVATION, INDIANAPOLIS, INDIANA  
A FOLDER DESCRIBING TOPOGRAPHIC MAPS AND SYMBOLS IS AVAILABLE ON REQUEST

OLIVER LAKE, IND.  
N4130-W8522.5/7.5  
1959

USGS  
FILE COPY  
TOPOGRAPHIC DIVISION

APR 17 1961  
2525