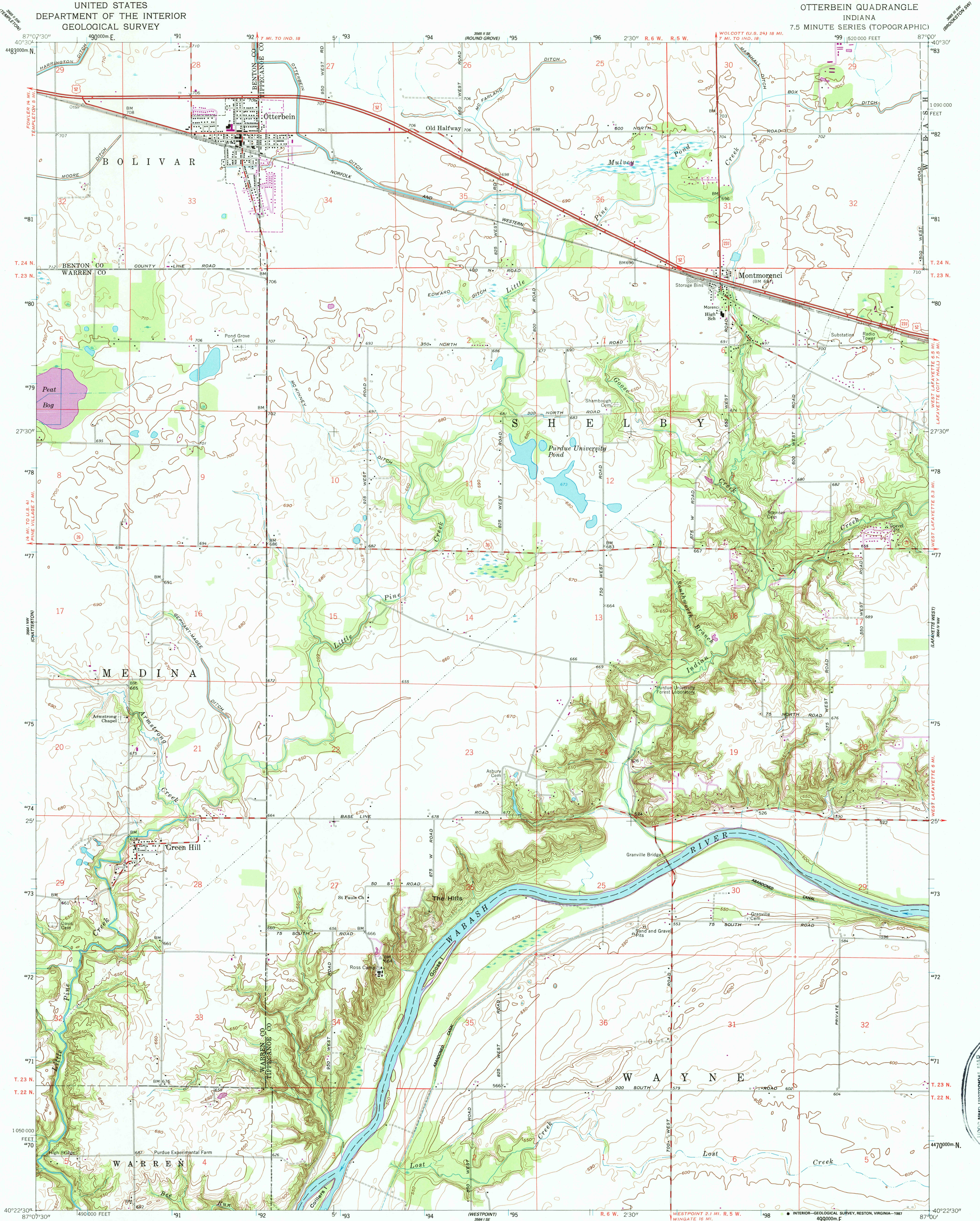


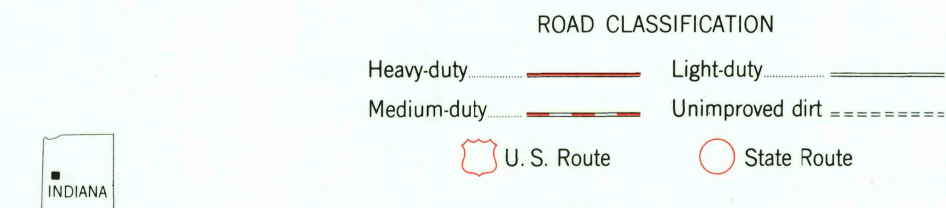
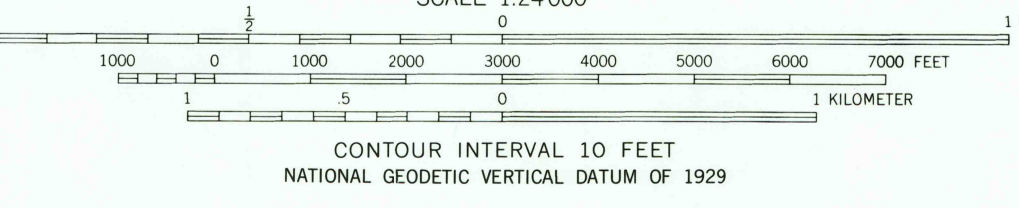
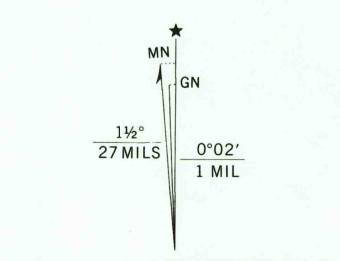
UNITED STATES
DEPARTMENT OF THE INTERIOR
GEOLOGICAL SURVEY

OTTERBEIN QUADRANGLE
INDIANA
7.5 MINUTE SERIES (TOPOGRAPHIC)



USGS NHD HISTORICAL MAP
SEP 28 1987
REC'D FILE COPY

Mapped, edited, and published by the Geological Survey
in cooperation with State of Indiana Department of Conservation
Control by USGS, NOS/NOAA, and USCE
Topography by planetable surveys 1939-1940. Revised 1961
Polyconic projection. 10,000-foot grid ticks based on
Indiana coordinate system, west zone
1000-meter Universal Transverse Mercator grid ticks,
zone 16, shown in blue
1927 North American Datum
To place on the predicted North American Datum 1983 move
the projection lines 2 meters east as shown
by dashed corner ticks
Revisions shown in purple and woodland compiled in
cooperation with State of Indiana agencies from
aerial photographs taken 1981 and other sources
This information not field checked. Map edited 1986



FOR SALE BY U. S. GEOLOGICAL SURVEY
DENVER, COLORADO 80225, OR RESTON, VIRGINIA 22092
AND INDIANA DEPARTMENT OF NATURAL RESOURCES, INDIANAPOLIS, INDIANA 46204
A FOLDER DESCRIBING TOPOGRAPHIC MAPS AND SYMBOLS IS AVAILABLE ON REQUEST

OTTERBEIN, IND.
40087-D1-TF-024
1961
PHOTOREVISED 1986
DMA 5564 1 NE-SERIES V851