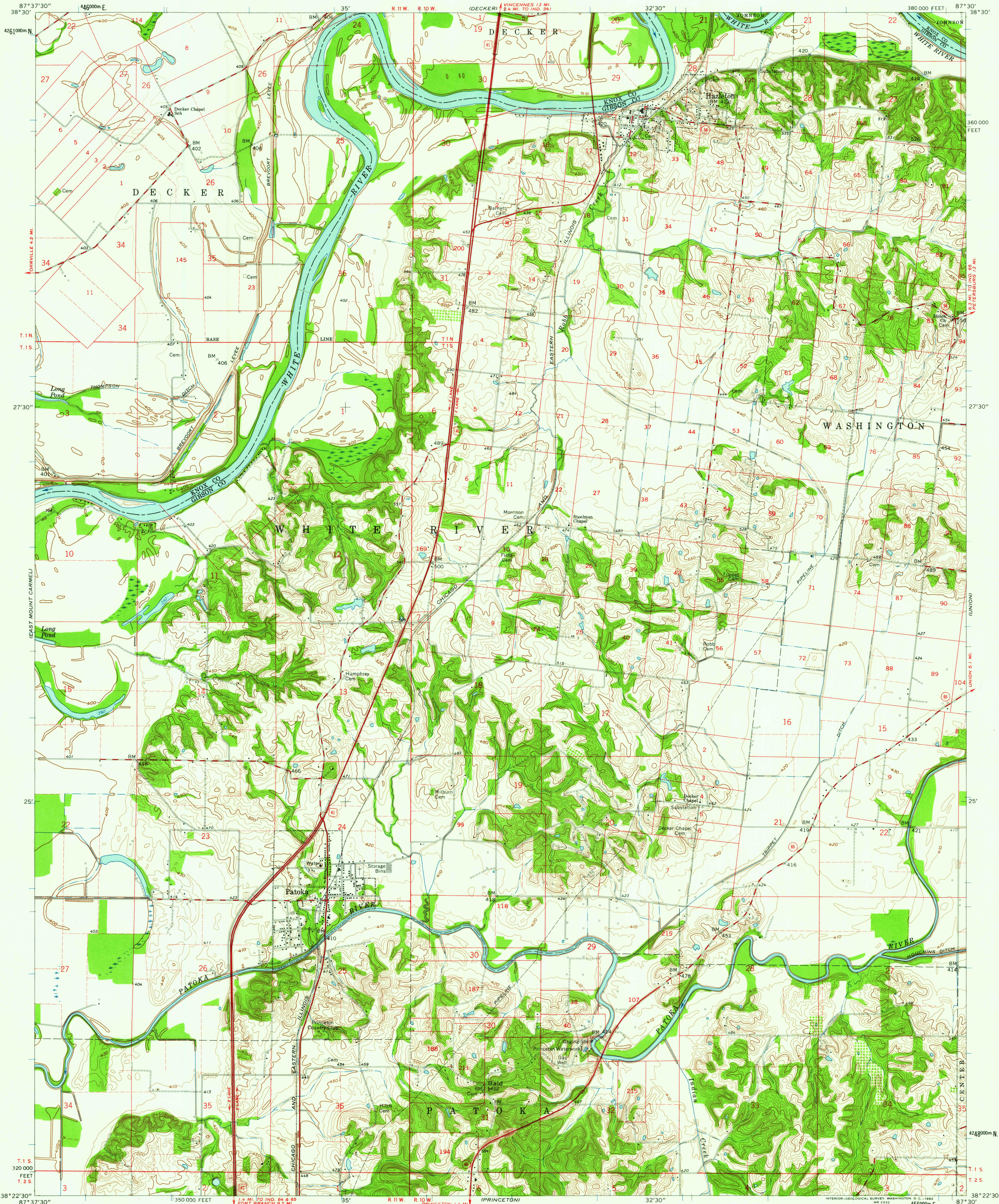


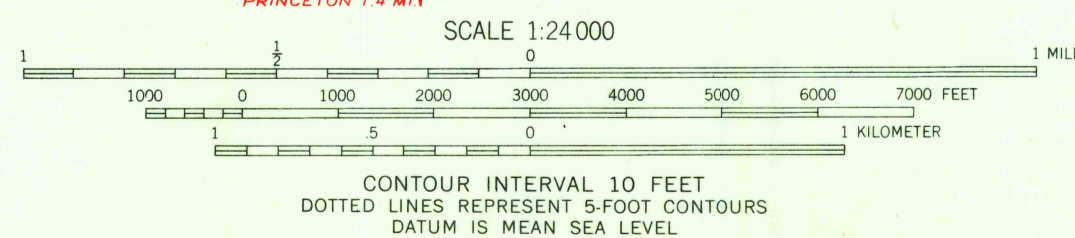
UNITED STATES  
DEPARTMENT OF THE INTERIOR  
GEOLOGICAL SURVEY

PATOKA QUADRANGLE  
INDIANA  
7.5 MINUTE SERIES (TOPOGRAPHIC)  
NE 1/4 PRINCETON 15 QUADRANGLE



Mapped, edited, and published by the Geological Survey  
Control by USGS, USC&GS, USCE, and Indiana Flood Control and  
Water Resources Commission  
Topography by photogrammetric methods from aerial  
photographs taken 1958 and by planimetric surveys 1959.  
Polyconic projection. 1927 North American datum  
10,000-foot grid based on Indiana coordinate system, west zone  
1000-meter Universal Transverse Mercator grid ticks,  
zone 16, shown in blue  
Fine red dashed lines indicate selected fence and field lines where  
generally visible on aerial photographs. This information is unchecked  
Unlabeled wells are oil wells

TRUE NORTH  
MAGNETIC NORTH  
APPROXIMATE MEAN  
DECLINATION, 1959



THIS MAP COMPLIES WITH NATIONAL MAP ACCURACY STANDARDS  
FOR SALE BY U.S. GEOLOGICAL SURVEY, WASHINGTON 25, D. C.  
AND INDIANA DEPARTMENT OF CONSERVATION, INDIANAPOLIS, INDIANA  
A FOLDER DESCRIBING TOPOGRAPHIC MAPS AND SYMBOLS IS AVAILABLE ON REQUEST

USGS  
Historical File  
Topographic Division



ROAD CLASSIFICATION  
Heavy-duty ——— Light-duty ———  
Medium-duty ——— Unimproved dirt ———  
U. S. Route ——— State Route ———

U.S.G.S.  
FILE COPY  
TOPOGRAPHIC DIVISION

PATOKA, IND.  
NE 1/4 PRINCETON 15 QUADRANGLE  
N3822.5—W8730/7.5  
1959

JUN 26 1962