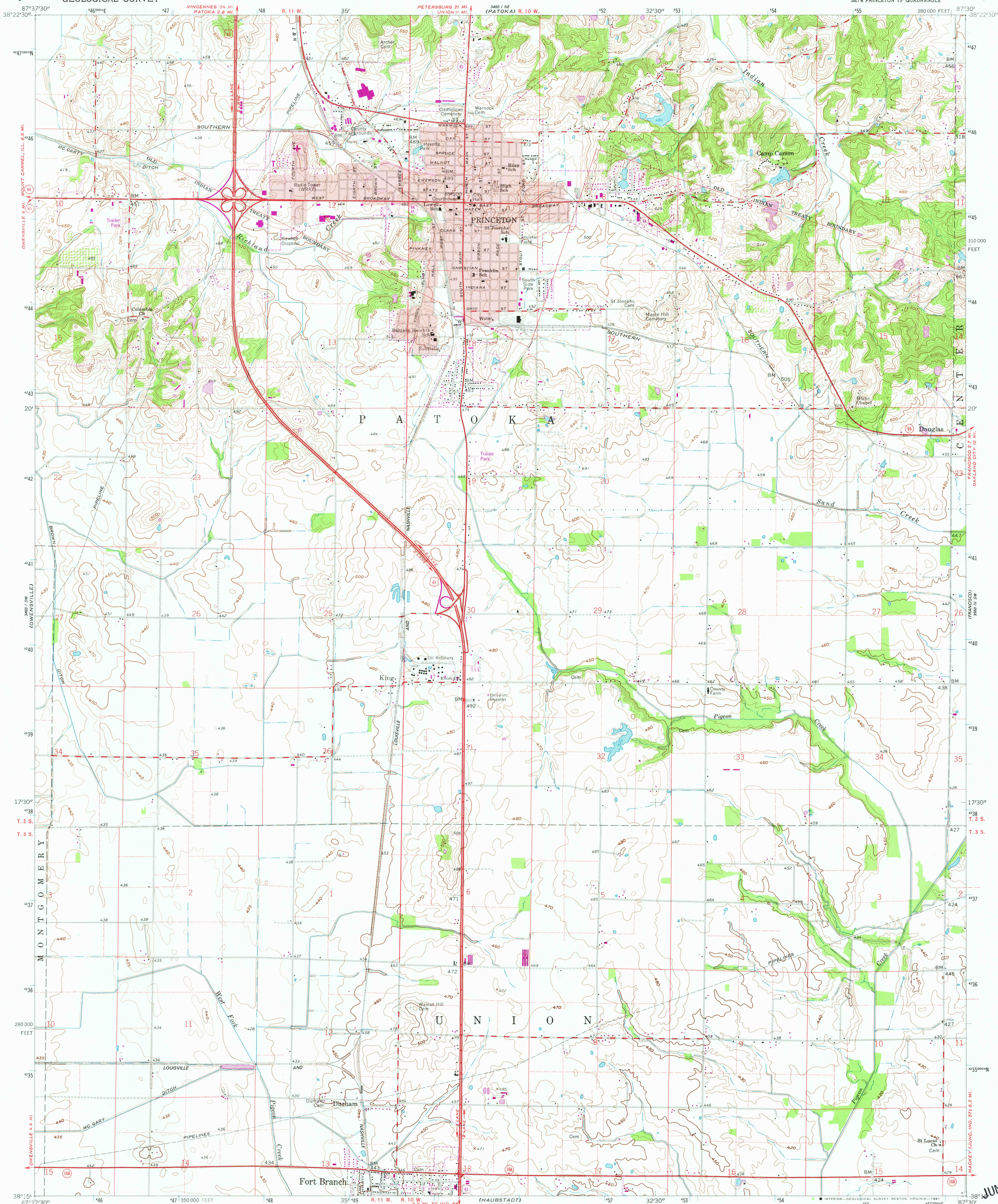


UNITED STATES  
DEPARTMENT OF THE INTERIOR  
GEOLOGICAL SURVEY

PRINCETON QUADRANGLE  
INDIANA—GIBSON CO.  
7.5 MINUTE SERIES (TOPOGRAPHIC)  
SE 1/4 PRINCETON 15' QUADRANGLE



Mapped, edited, and published by the Geological Survey  
Control by USGS and USC&GS

Topography from aerial photographs by photogrammetric methods  
and by planetable surveys 1959. Aerial photographs taken 1953

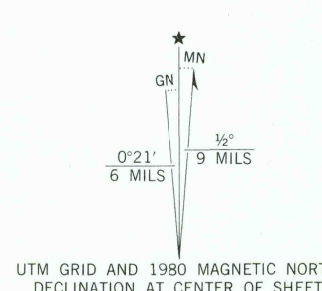
Polyconic projection  
10,000-foot grid based on Indiana coordinate system, west zone  
1000-meter Universal Transverse Mercator grid ticks,  
zone 16, shown in blue. 1927 North American Datum

To place on the predicted North American Datum 1983  
move the projection lines 3 meters south and  
2 meters east as shown by dashed corner ticks

Fine red dashed lines indicate selected fence and field lines where  
generally visible on aerial photographs. This information is unchecked

Red tint indicates areas in which only landmark buildings are shown

All wells shown are oil wells



SCALE 1:24,000  
1 1000 2000 3000 4000 5000 6000 7000 FEET  
1 1 2 3 4 5 6 7 8 9 10 KILOMETER  
CONTOUR INTERVAL 10 FEET  
DOTTED LINES REPRESENT 5-FOOT CONTOURS  
NATIONAL GEODETIC VERTICAL DATUM OF 1929

THIS MAP COMPLIES WITH NATIONAL MAP ACCURACY STANDARDS  
FOR SALE BY U. S. GEOLOGICAL SURVEY, RESTON, VIRGINIA 22092  
AND INDIANA DEPARTMENT OF NATURAL RESOURCES, INDIANAPOLIS, INDIANA 46204  
A FOLDER DESCRIBING TOPOGRAPHIC MAPS AND SYMBOLS IS AVAILABLE ON REQUEST

Revisions shown in purple compiled in cooperation with State  
of Indiana agencies from aerial photographs taken 1977 and other  
source data. This information not field checked. Map edited 1980

ROAD CLASSIFICATION  
Heavy-duty ——— Light-duty ———  
Medium-duty ——— Unimproved dirt ———  
U.S. Route ——— State Route ———

PRINCETON, IND.  
SE 1/4 PRINCETON 15' QUADRANGLE  
N 3815—W 8730/7.5

1959  
PHOTOREVISED 1980  
DMA 3460 I SE—SERIES V85 I

JUN 01 1982

1600