

3663 III SW (MANSFIELD)

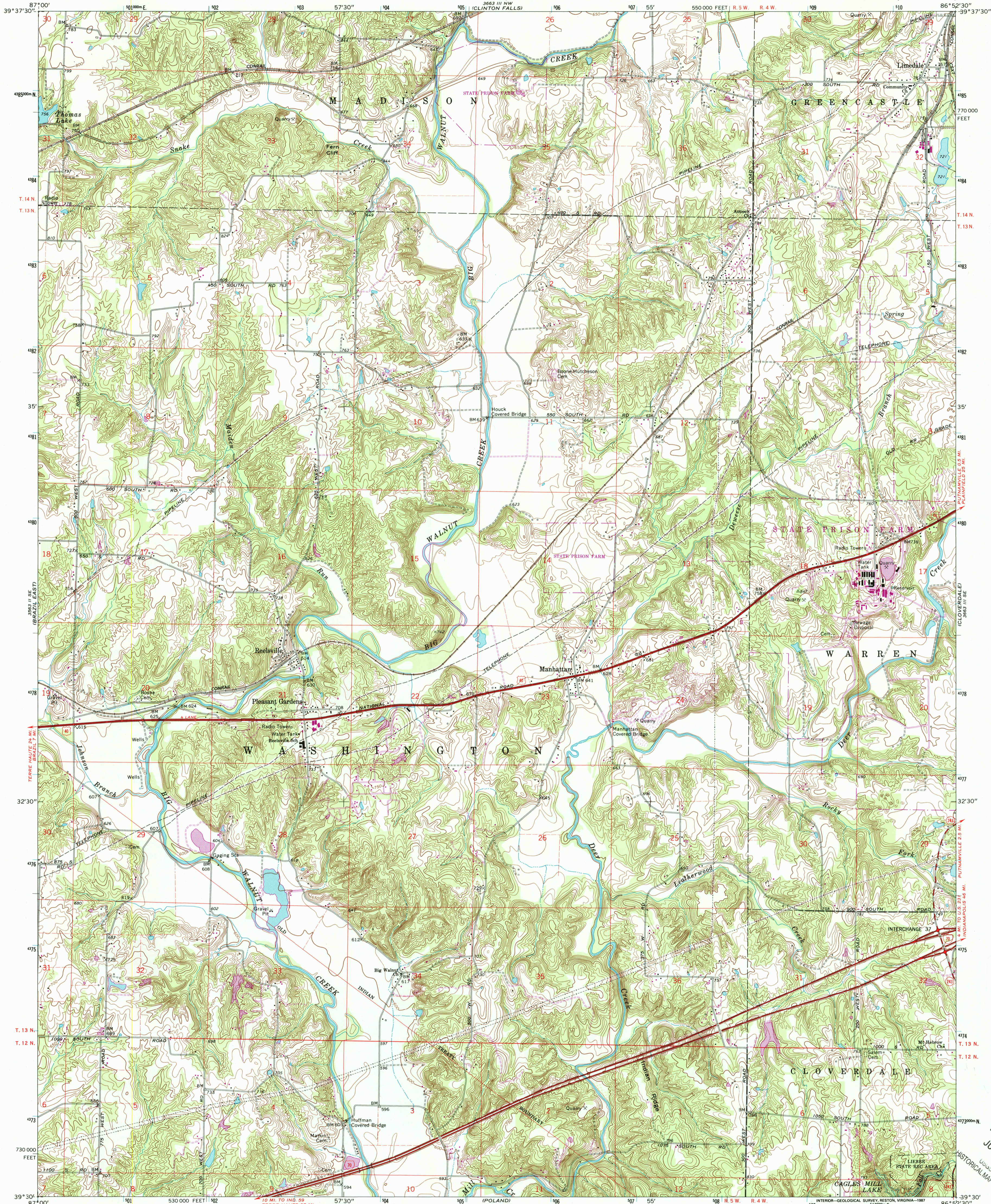


U.S. DEPARTMENT OF THE INTERIOR  
U.S. GEOLOGICAL SURVEY

STATE OF INDIANA  
DEPARTMENT OF NATURAL RESOURCES  
INDIANAPOLIS, INDIANA

REELSVILLE QUADRANGLE  
INDIANA—PUTNAM CO.  
7.5 MINUTE SERIES (TOPOGRAPHIC)

3663 III NE (GREENCASTLE)



Mapped, edited, and published by the Geological Survey

Control by USGS and NOS/NOAA

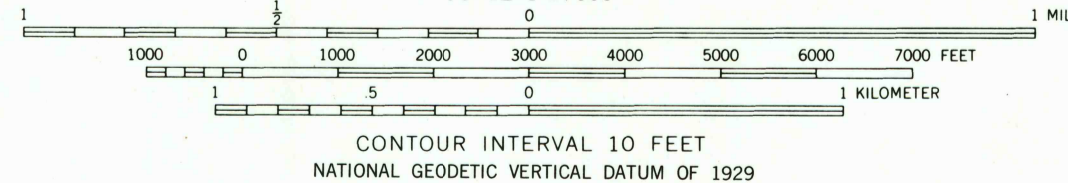
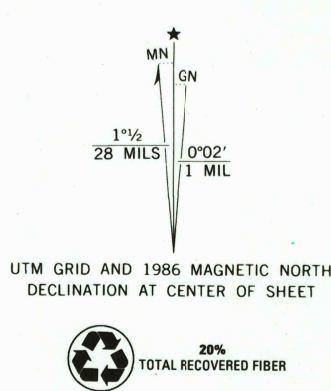
Planimetry by photogrammetric methods from aerial photographs taken 1949. Topography by planetable surveys 1952. Revised from aerial photographs taken 1969. Field checked 1971

Polyconic projection. 10,000-foot grid ticks based on Indiana coordinate system, west zone 1000-meter Universal Transverse Mercator grid ticks, zone 16, shown in blue. 1927 North American Datum To place on the predicted North American Datum 1983 move the projection lines 1 meter south and 1 meter east as shown by dashed corner ticks

Fine red dashed lines indicate selected fence and field lines where generally visible on aerial photographs. This information is unchecked

There may be private inholdings within the boundaries of the National or State reservations shown on this map

Areas covered by dashed light-blue pattern are subject to controlled inundation



CONTOUR INTERVAL 10 FEET  
NATIONAL GEODETIC VERTICAL DATUM OF 1929

THIS MAP COMPLIES WITH NATIONAL MAP ACCURACY STANDARDS  
FOR SALE BY U. S. GEOLOGICAL SURVEY  
DENVER, COLORADO 80225, OR RESTON, VIRGINIA 22092  
AND INDIANA DEPARTMENT OF NATURAL RESOURCES, INDIANAPOLIS, INDIANA 46204  
A FOLDER DESCRIBING TOPOGRAPHIC MAPS AND SYMBOLS IS AVAILABLE ON REQUEST



QUADRANGLE LOCATION

ROAD CLASSIFICATION	
Primary highway, hard surface	Light-duty road, hard or improved surface
Secondary highway, hard surface	Unimproved road
Interstate Route	U. S. Route
	State Route

REELSVILLE, IND.  
39086-E8-TF-024

1971  
PHOTOREVISED 1986  
DMA 5663 III SW—SERIES 1985

USGS Library  
Reston, VA  
Topo Archive



RECEIVED  
JUN 10 2003  
HISTORICAL MAP ARCHIVES

