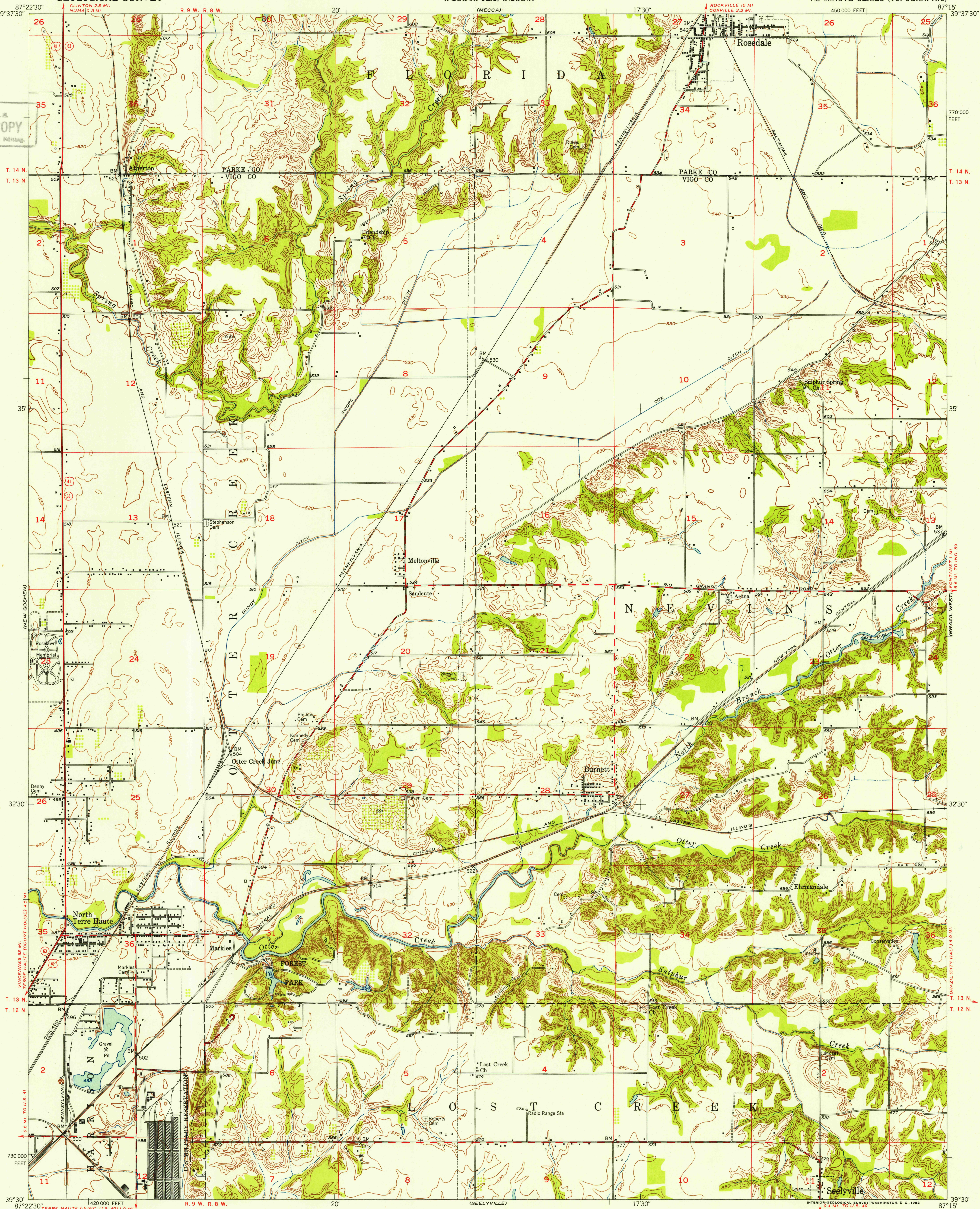
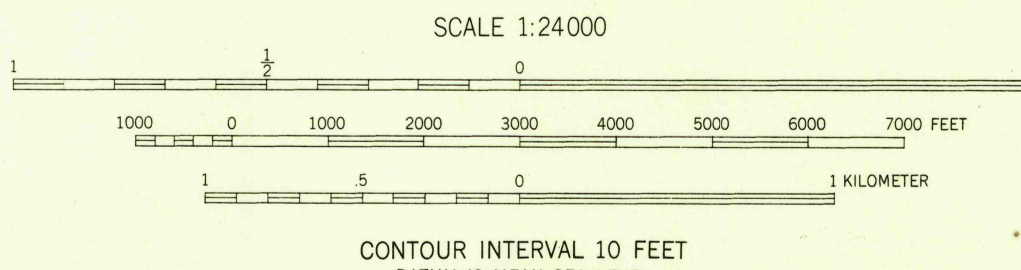


FILE COPY  
Inspection and Mailing



Mapped, edited, and published by the Geological Survey  
Control by USGS and USC&GS  
Culture and drainage in part compiled from  
aerial photographs taken 1949  
Topography by plane-table methods 1950  
Polyconic projection. 1927 North American datum  
10,000-foot grid based on Indiana coordinate system,  
west zone



CONTOUR INTERVAL 10 FEET  
DATUM IS MEAN SEA LEVEL

USGS  
Historical File  
Topographic Division

ROAD CLASSIFICATION  
Heavy-duty 4 LANE 6 LANE Light-duty  
Medium-duty 4 LANE 6 LANE Unimproved dirt  
U. S. Route State Route

U. S. G. S.  
FILE COPY  
Inspection and Mailing

ROSEDALE, IND.  
N3930-W8715/7.5

1950

THIS MAP COMPLIES WITH NATIONAL MAP ACCURACY STANDARDS  
FOR SALE BY U. S. GEOLOGICAL SURVEY, WASHINGTON 25, D. C.  
AND INDIANA DEPARTMENT OF CONSERVATION, INDIANAPOLIS, INDIANA  
A FOLDER DESCRIBING TOPOGRAPHIC MAPS AND SYMBOLS IS AVAILABLE ON REQUEST