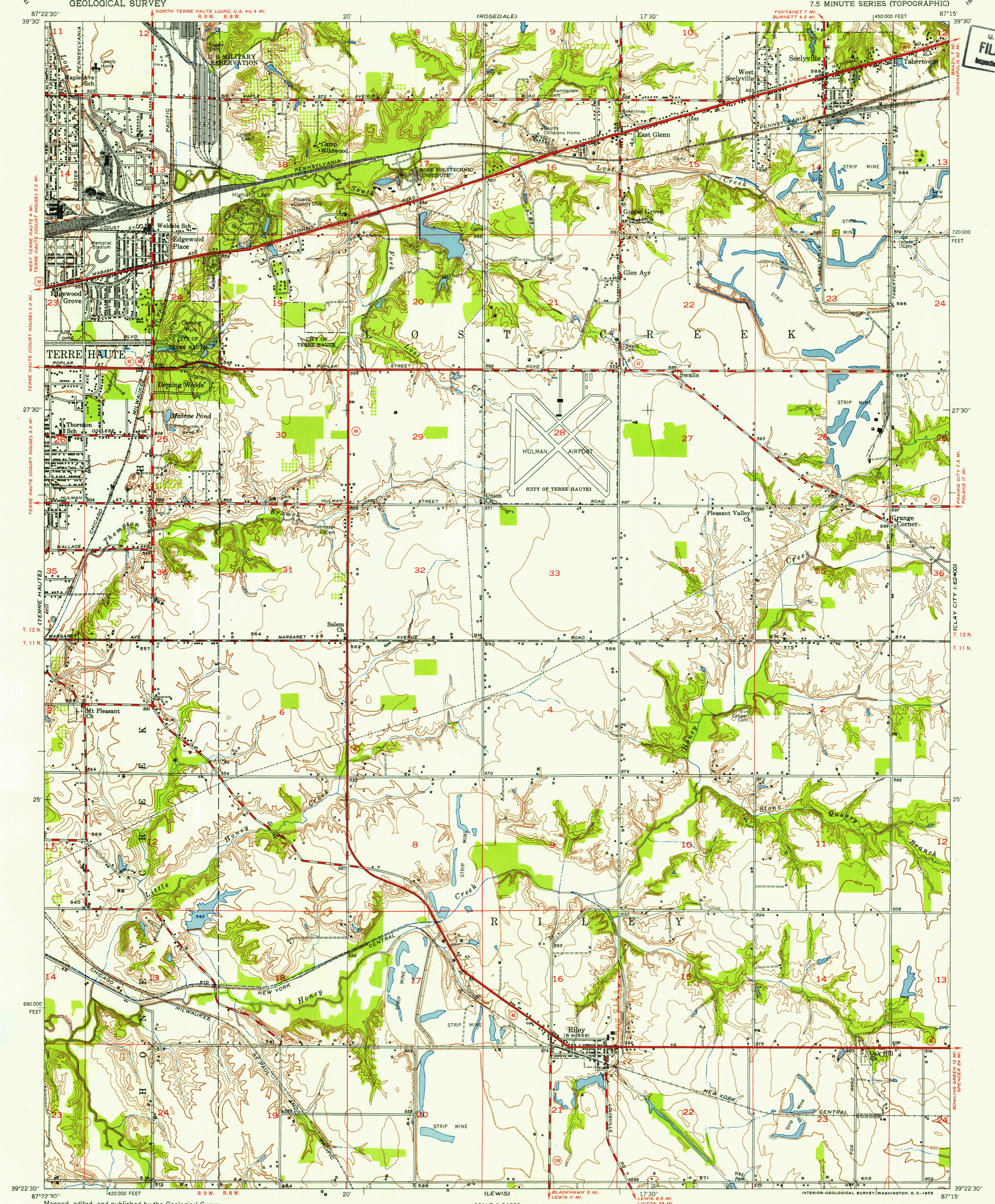


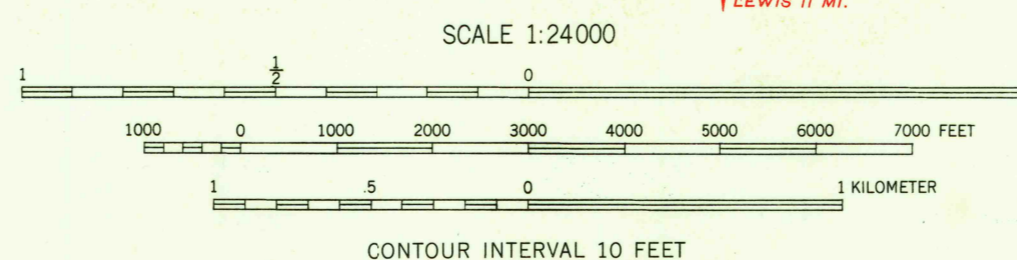
UNITED STATES
DEPARTMENT OF THE INTERIOR
GEOLOGICAL SURVEY

SEELYVILLE QUADRANGLE
INDIANA-VIGO CO.
7.5 MINUTE SERIES (TOPOGRAPHIC)

U.S.G.S.
FILE COPY
Inspection and Editing



Maped, edited, and published by the Geological Survey
Control by USGS
Topography by plane-table surveys 1939. Revised 1952
Polyconic projection. 1927 North American datum
10,000-foot grid based on Indiana coordinate system,
west zone



USGS
Historical File
Topographic Division

ROAD CLASSIFICATION
Heavy-duty ——— 4 LANE 6 LANE Light-duty ———
Medium-duty ——— 4 LANE 6 LANE Unimproved dirt ———
U.S. Route ——— State Route ———



THIS MAP COMPLIES WITH NATIONAL MAP ACCURACY STANDARDS
FOR SALE BY U.S. GEOLOGICAL SURVEY, WASHINGTON 25, D. C.
AND INDIANA DEPARTMENT OF CONSERVATION, INDIANAPOLIS, INDIANA
A FOLDER DESCRIBING TOPOGRAPHIC MAPS AND SYMBOLS IS AVAILABLE ON REQUEST

SEELYVILLE, IND.
N 3922.5-W 8715/7.5
1952

U.S.G.S.
FILE COPY
Inspection and Editing

JUN 10 1953