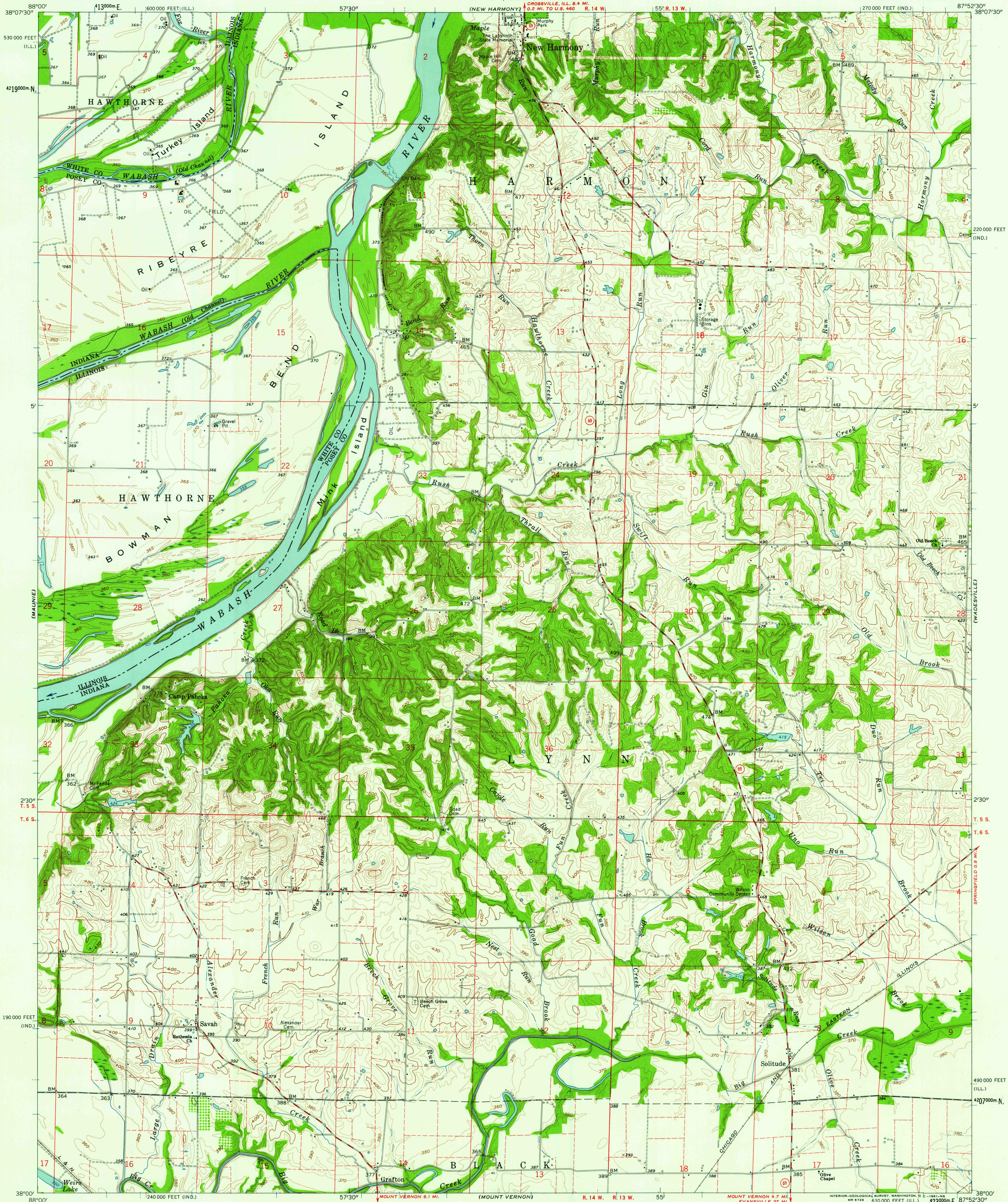


UNITED STATES  
DEPARTMENT OF THE INTERIOR  
GEOLOGICAL SURVEY

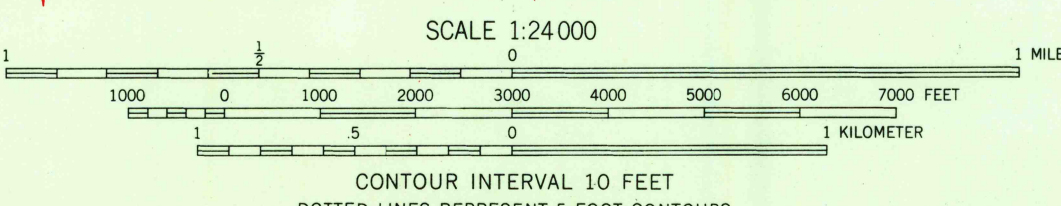
STATE OF ILLINOIS  
DEPARTMENT OF REGISTRATION AND EDUCATION  
GEOLOGICAL SURVEY DIVISION  
URBANA, ILLINOIS

SOLITUDE QUADRANGLE  
INDIANA-ILLINOIS  
7.5 MINUTE SERIES (TOPOGRAPHIC)  
SW 1/4 NEW HARMONY 15' QUADRANGLE



Mapped, edited, and published by the Geological Survey  
Control by USGS, USCGS, and USCE  
Culture and drainage in part compiled from aerial photographs  
taken 1958. Topography by photogrammetric methods and by  
planetable surveys 1959  
Polyconic projection. 1927 North American datum  
10,000-foot grids based on Indiana coordinate system,  
west zone, and Illinois coordinate system, east zone  
1000-meter Universal Transverse Mercator grid ticks,  
zone 16, shown in blue  
Fine red dashed lines indicate selected fence and field lines where  
generally visible on aerial photographs. This information is unchecked  
All wells shown are oil wells

TRUE NORTH  
MAGNETIC NORTH  
APPROXIMATE MEAN  
DECLINATION, 1959



THIS MAP COMPLIES WITH NATIONAL MAP ACCURACY STANDARDS  
FOR SALE BY U. S. GEOLOGICAL SURVEY, WASHINGTON 25, D. C.,  
INDIANA DEPARTMENT OF CONSERVATION, INDIANAPOLIS, INDIANA,  
AND BY THE STATE GEOLOGICAL SURVEY, URBANA, ILLINOIS  
A FOLDER DESCRIBING TOPOGRAPHIC MAPS AND SYMBOLS IS AVAILABLE ON REQUEST

USGS  
Historical File  
Topographic Division



ROAD CLASSIFICATION  
Medium-duty ——— Light-duty ———  
Unimproved dirt ———  
State Route ———

USGS  
FILE COPY  
TOPOGRAPHIC DIVISION

SOLITUDE, IND.-ILL.  
SW 1/4 NEW HARMONY 15' QUADRANGLE  
N 3800—W 8752.5/7.5

1959

JUL 6 1961  
JUL 26 1961  
2555