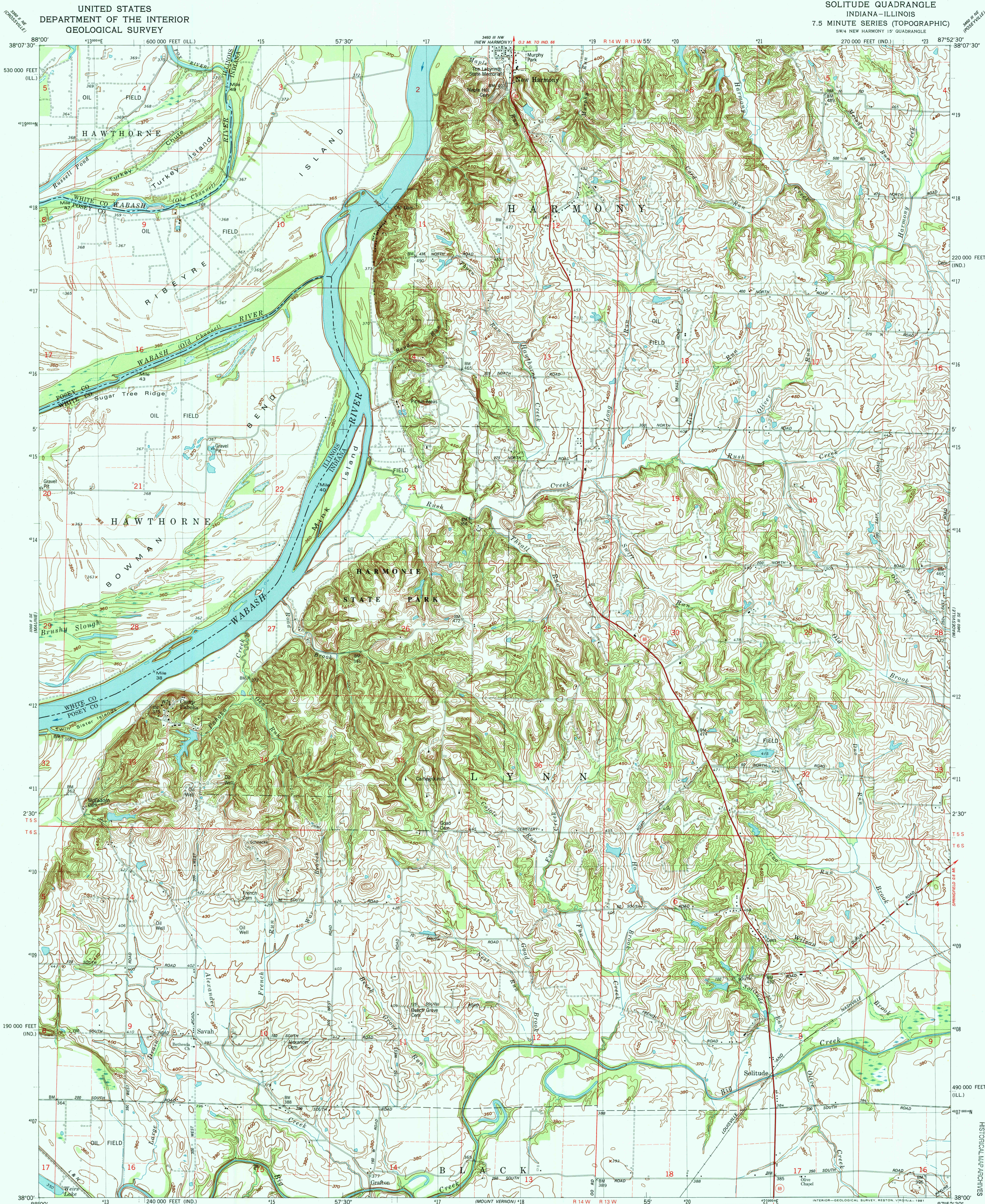
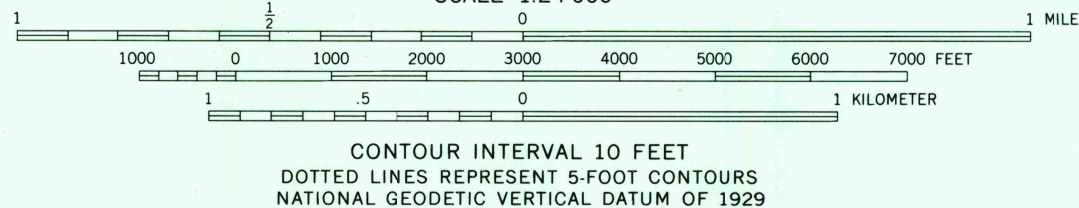
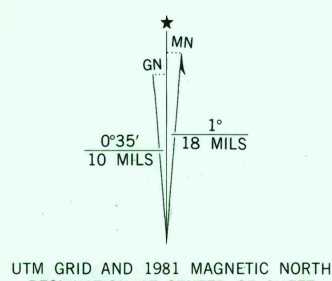


UNITED STATES
DEPARTMENT OF THE INTERIOR
GEOLOGICAL SURVEY

SOLITUDE QUADRANGLE
INDIANA-ILLINOIS
7.5 MINUTE SERIES (TOPOGRAPHIC)
SW/4 NEW HARMONY 15' QUADRANGLE



Mapped, edited, and published by the Geological Survey in cooperation with the Illinois Institute of Natural Resources, Geological Survey Division
Control by USGS, NOS/NOAA, and USCE
Culture and drainage in part compiled from aerial photographs taken 1958. Topography by photogrammetric methods and by planetable surveys 1959. Revised from aerial photographs taken 1973. Field checked 1976. Map edited 1981
Polyconic projection. 10,000-foot grid ticks based on Indiana coordinate system, west zone, and Illinois coordinate system, east zone 1000-meter Universal Transverse Mercator grid, zone 18 1927 North American Datum
To place on the predicted North American Datum 1983 move the meridian lines 3 meters south and 3 meters east as shown by dashed corner ticks
Fine red dashed lines indicate selected fence and field lines where generally visible on aerial photographs. This information is unchecked
There may be private inholdings within the boundaries of the National or State reservations shown on this map
All wells shown are oil wells



THIS MAP COMPLIES WITH NATIONAL MAP ACCURACY STANDARDS
FOR SALE BY THE U. S. GEOLOGICAL SURVEY, RESTON, VIRGINIA 22092,
INDIANA DEPARTMENT OF NATURAL RESOURCES, INDIANAPOLIS, INDIANA 46204,
AND BY THE STATE GEOLOGICAL SURVEY, URBANA, ILLINOIS 61801
A FOLDER DESCRIBING TOPOGRAPHIC MAPS AND SYMBOLS IS AVAILABLE ON REQUEST



ROAD CLASSIFICATION
Primary highway, hard surface ————
Secondary highway, hard surface ————
Unimproved road ————
Interstate Route ————
U. S. Route ————
State Route ————
Light-duty road, hard or improved surface ————
Unimproved road ————

SOLITUDE, IND.-ILL.
SW/4 NEW HARMONY 15' QUADRANGLE
N3800-W8752.5/7.5
1981
DMA 3460 III SW-SERIES V851

HISTORICAL MAP ARCHIVES
USGS NAD

FEB 28 1999

RECEIVED

