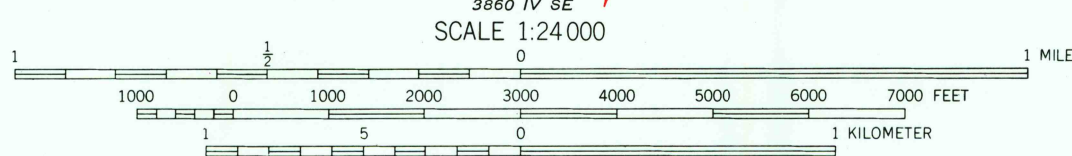
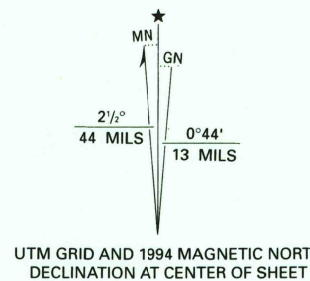
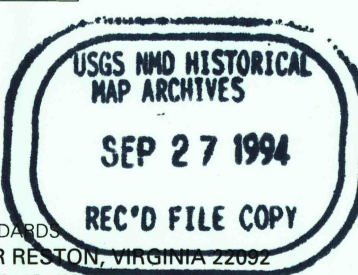


Produced by the U. S. Geological Survey
Control by USGS and NOS/NOAA
Topography by planetable surveys 1937-38
Revised 1963
North American Datum of 1927 (NAD 27). Projection and
10 000-foot ticks: Indiana coordinate system, east zone
(transverse Mercator)
Blue 1000-meter Universal Transverse Mercator grid ticks, zone 16
North American Datum of 1983 (NAD 83) is shown by dashed
corner ticks. The values of the shift between NAD 27 and NAD 83
for 7.5-minute intersections are obtainable from National Geodetic
Survey NADCON software
There may be private inholdings within the boundaries of
the National or State reservations shown on this map
Red tint indicates areas in which only landmark buildings are shown
Dotted land lines established by private survey
Photinspected from 1992 source; no major culture or drainage
changes observed. Boundaries and names revised 1994



CONTOUR INTERVAL 10 FEET
NATIONAL GEODETIC VERTICAL DATUM OF 1929



ROAD CLASSIFICATION
Heavy-duty ——— Light-duty ———
Medium-duty ——— Unimproved dirt ———
○ Interstate Route ○ U.S. Route ○ State Route

SPEED, IND.
38085-D7-TF-Q24

1963
PHOTO-REVISED 1980
MINOR REVISION 1994
DMA 3860 IV NE-SERIES V851

THIS MAP COMPLIES WITH NATIONAL MAP ACCURACY STANDARDS
FOR SALE BY U.S. GEOLOGICAL SURVEY, DENVER, COLORADO 80225, OR RESTON, VIRGINIA 22092
AND INDIANA DEPARTMENT OF NATURAL RESOURCES, INDIANAPOLIS, INDIANA 46204
A FOLDER DESCRIBING TOPOGRAPHIC MAPS AND SYMBOLS IS AVAILABLE ON REQUEST

Revisions shown in purple compiled in cooperation with State
of Indiana agencies from aerial photographs taken 1978 and other
source data. This information not field checked. Map edited 1980