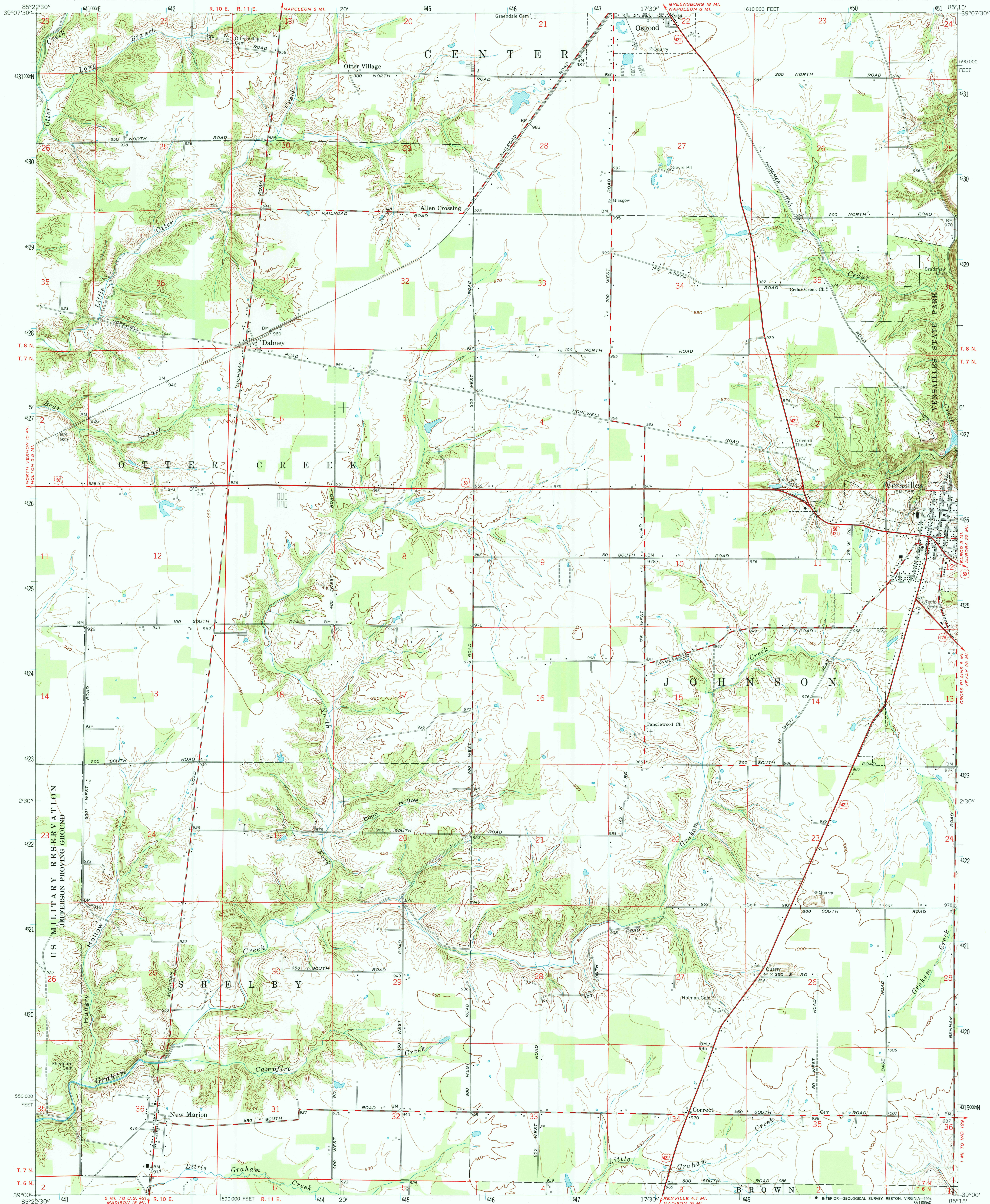
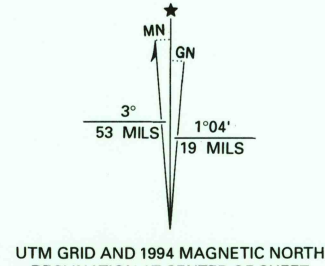


UNITED STATES  
DEPARTMENT OF THE INTERIOR  
GEOLOGICAL SURVEY

VERSAILLES QUADRANGLE  
INDIANA—RIPLEY CO.  
7.5 MINUTE SERIES (TOPOGRAPHIC)



Produced by the U. S. Geological Survey  
in cooperation with Indiana Department of Natural Resources  
Control by USGS and NOS/NOAA  
Topography by planetable surveys 1943. Revised 1961  
Projection and 10,000-foot grid ticks: Indiana coordinate  
system, east zone (transverse Mercator)  
1000-meter Universal Transverse Mercator grid ticks, zone 16, shown in blue  
1927 North American Datum (NAD 27)  
North American Datum of 1983 (NAD 83) is shown by dashed corner ticks  
The values of the shift between NAD 27 and NAD 83 for 7.5-minute  
intersections are given in USGS Bulletin 1875  
There may be private inholdings within the boundaries of  
the National or State reservations shown on this map  
Photinspected from 1992 source; no major culture or drainage  
changes observed. Boundaries and names revised 1994



SCALE 1:24,000  
1 000 0 1000 2000 3000 4000 5000 6000 7000 FEET  
1 KILOMETER  
CONTOUR INTERVAL 10 FEET  
NATIONAL GEODETIC VERTICAL DATUM OF 1929

THIS MAP COMPLIES WITH NATIONAL MAP ACCURACY STANDARDS  
FOR SALE BY U. S. GEOLOGICAL SURVEY, DENVER, COLORADO 80225, OR RESTON, VIRGINIA 22092  
AND INDIANA DEPARTMENT OF NATURAL RESOURCES, INDIANAPOLIS, INDIANA 46204  
A FOLDER DESCRIBING TOPOGRAPHIC MAPS AND SYMBOLS IS AVAILABLE ON REQUEST

1	2	3	1 Millhouse
4	5	2 Osgood	2 Pierceville
6	7	3 Osgood	3 Holton
		4 Milan	4 San Jacinto
		5 San Jacinto	5 Rexville
		6 Rexville	6 Cross Plains
		7 Cross Plains	

ADJOINING 7.5' QUADRANGLE NAMES

ROAD CLASSIFICATION

Heavy-duty ——— Light-duty ———  
Medium-duty ——— Unimproved dirt ———  
State Route ———

U.S. Route

VERSAILLES, IND.  
39085-A3-TF-024

1961  
MINOR REVISION 1994  
DMA 3962 III SE-SERIES V851