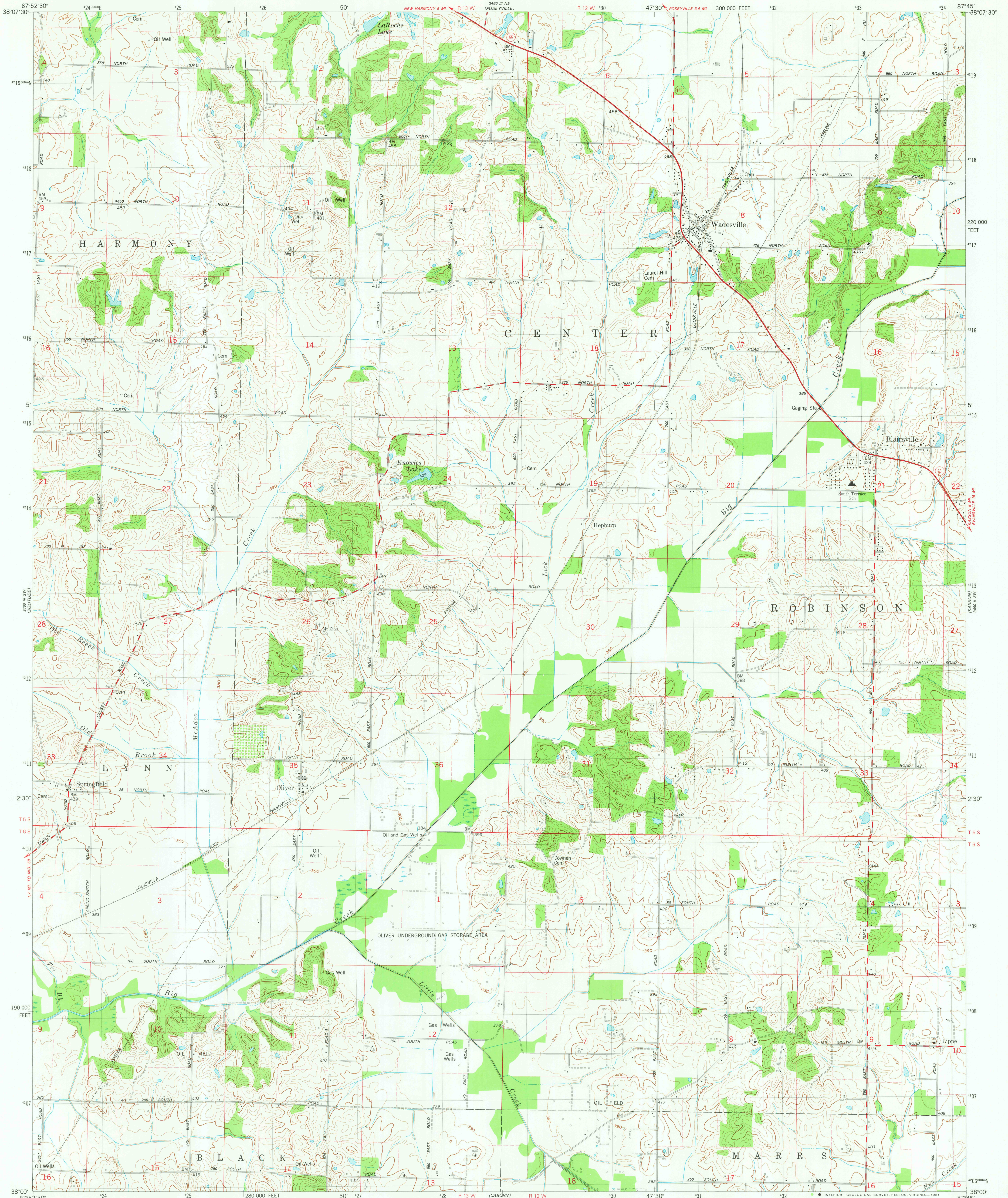
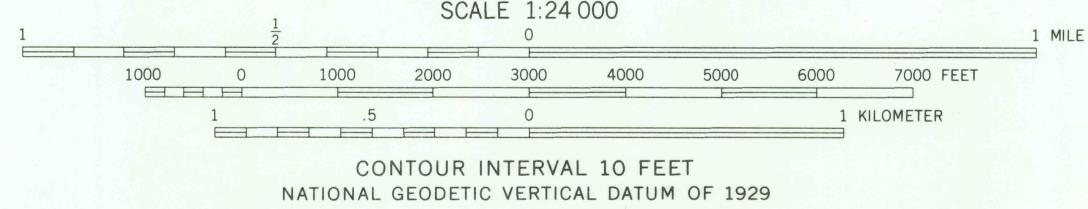
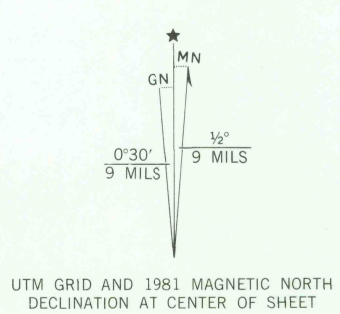


UNITED STATES  
DEPARTMENT OF THE INTERIOR  
GEOLOGICAL SURVEY

WADESVILLE QUADRANGLE  
INDIANA-POSEY CO.  
7.5 MINUTE SERIES (TOPOGRAPHIC)  
SE 1/4 NEW HARMONY 15' QUADRANGLE



Mapped, edited, and published by the Geological Survey  
Control by USGS and NOS/NOAA  
Topography by photogrammetric methods from aerial photographs  
taken 1958 and planetable surveys 1959. Revised from aerial photographs  
taken 1973. Field checked 1975 and 1976. Map edited 1981  
Polyconic projection. 10,000-foot grid ticks based  
on Indiana coordinate system, west zone  
1000-meter Universal Transverse Mercator grid, zone 16  
1927 North American Datum  
To place on the predicted North American Datum 1983  
move the projection lines 3 meters south and  
3 meters east as shown by dashed corner ticks  
Fine red dashed lines indicate selected fence and field lines where  
generally visible on aerial photographs. This information is unchecked



THIS MAP COMPLIES WITH NATIONAL MAP ACCURACY STANDARDS  
FOR SALE BY U. S. GEOLOGICAL SURVEY, RESTON, VIRGINIA 22092,  
AND INDIANA DEPARTMENT OF NATURAL RESOURCES, INDIANAPOLIS, INDIANA 46204  
A FOLDER DESCRIBING TOPOGRAPHIC MAPS AND SYMBOLS IS AVAILABLE ON REQUEST

ROAD CLASSIFICATION	
Primary highway, hard surface	Light-duty road, hard or improved surface
Secondary highway, hard surface	Unimproved road
Interstate Route	U. S. Route
	State Route



WADESVILLE, IND.  
SE 1/4 NEW HARMONY 15' QUADRANGLE  
N3800-W8745/7.5  
1981  
DMA 3460 III SE-SERIES V851

OCT 28 1981

1900